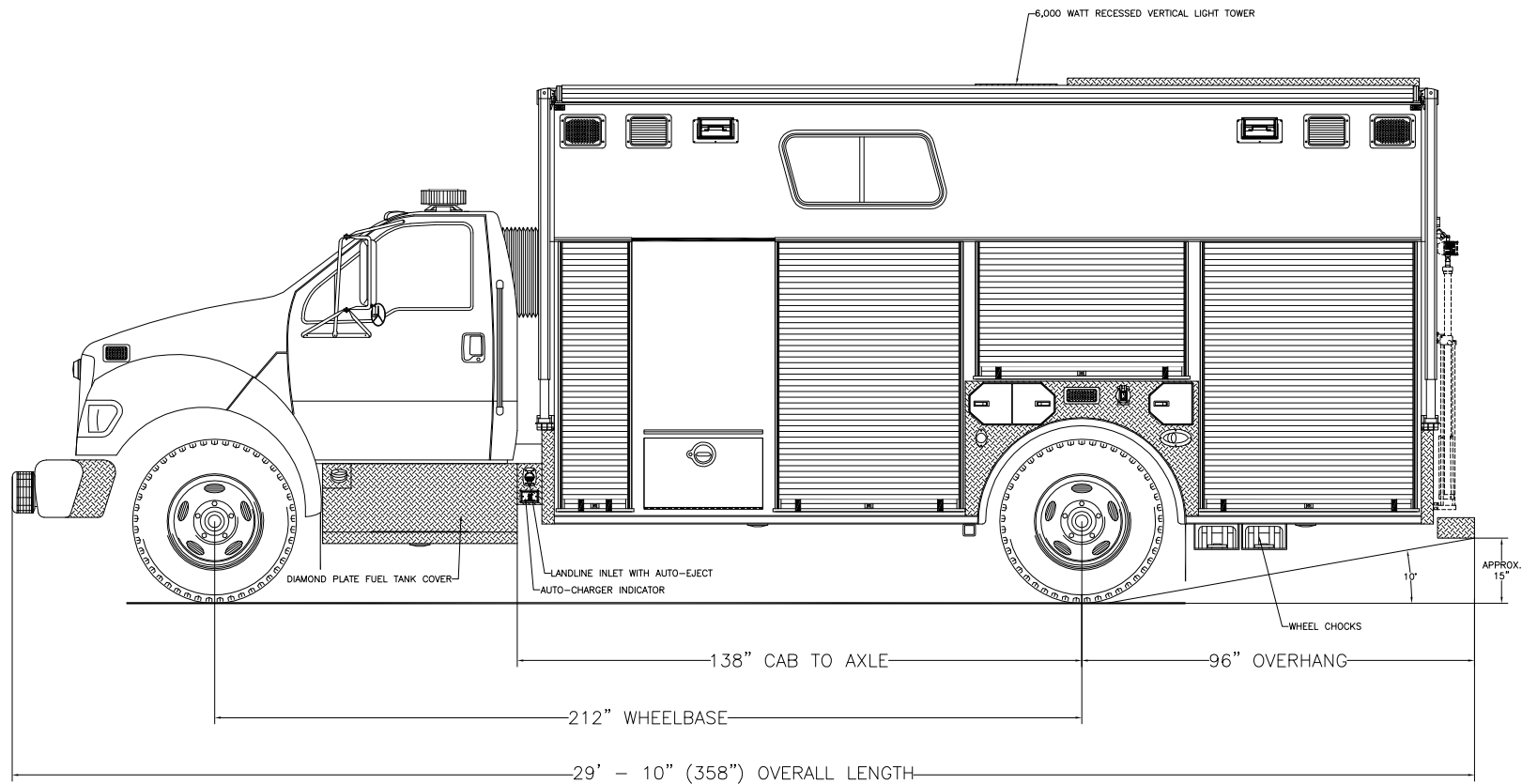
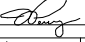


EMERGENCY VEHICLES, INC.

*Liberty Fire Company
New Holland, Pennsylvania*



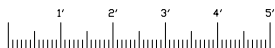
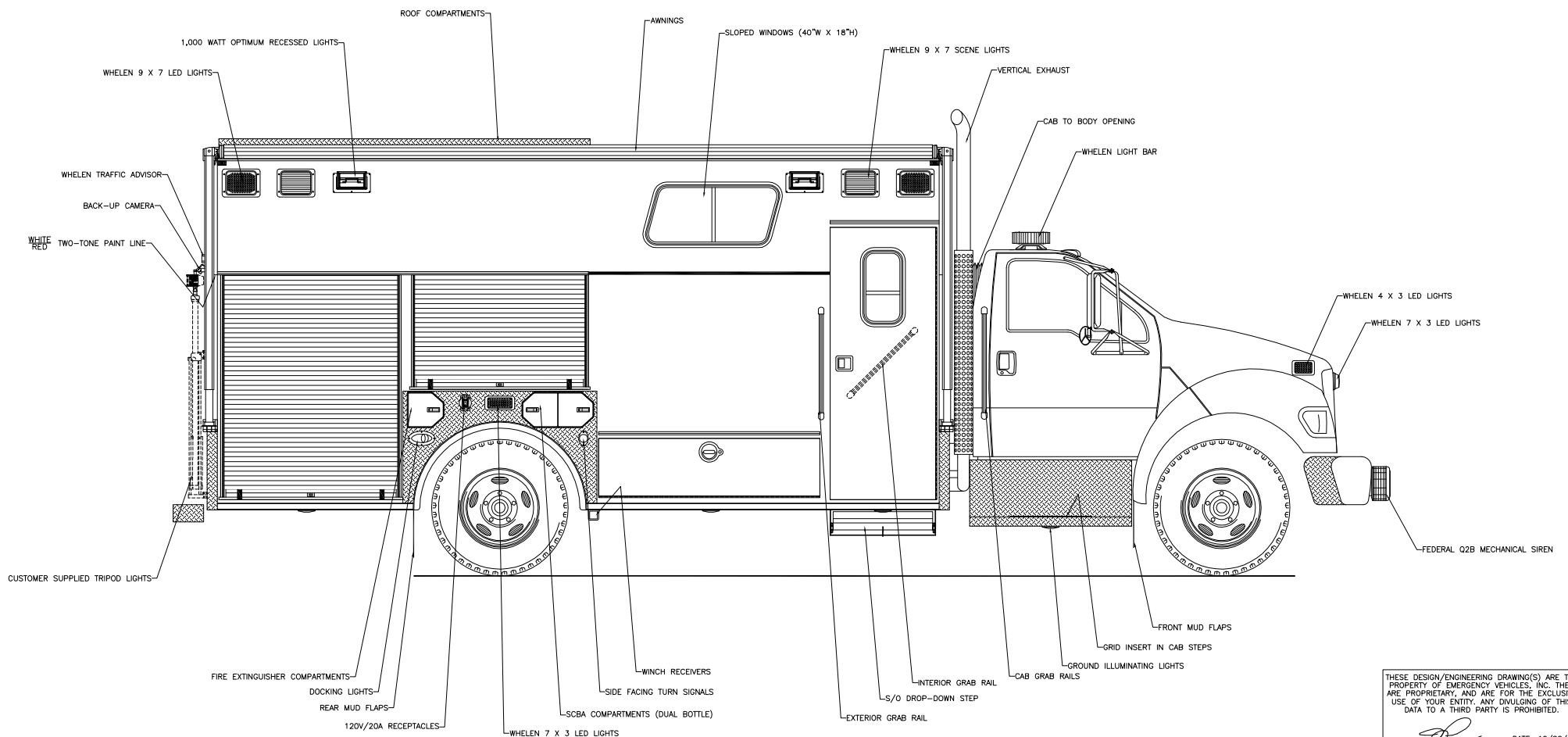
Streetside Overall

THESE DESIGN/ENGINEERING DRAWING(S) ARE THE PROPERTY OF EMERGENCY VEHICLES, INC. THEY ARE PROPRIETARY, AND ARE FOR THE EXCLUSIVE USE OF YOUR ENTITY. ANY DIVULGING OF THIS DATA TO A THIRD PARTY IS PROHIBITED.			
			DATE: 10/06/08
REVISION 1	NS	12/24/08	
REVISION 2	NS	01/22/09	
REVISION 3	NS	02/10/09	
REVISION 4	-		
REVISION 5	-		

PRODDWG\LIBERTY2777\CREW18\11\NS\100608

EMERGENCY VEHICLES, INC.

*Liberty Fire Company
New Holland, Pennsylvania*



Curbside Overall

THESE DESIGN/ENGINEERING DRAWING(S) ARE THE PROPERTY OF EMERGENCY VEHICLES, INC. THEY ARE PROPRIETARY, AND ARE FOR THE EXCLUSIVE USE OF YOUR ENTITY. ANY DIVULGING OF THIS DATA TO A THIRD PARTY IS PROHIBITED.

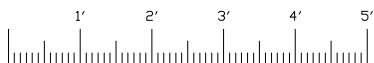
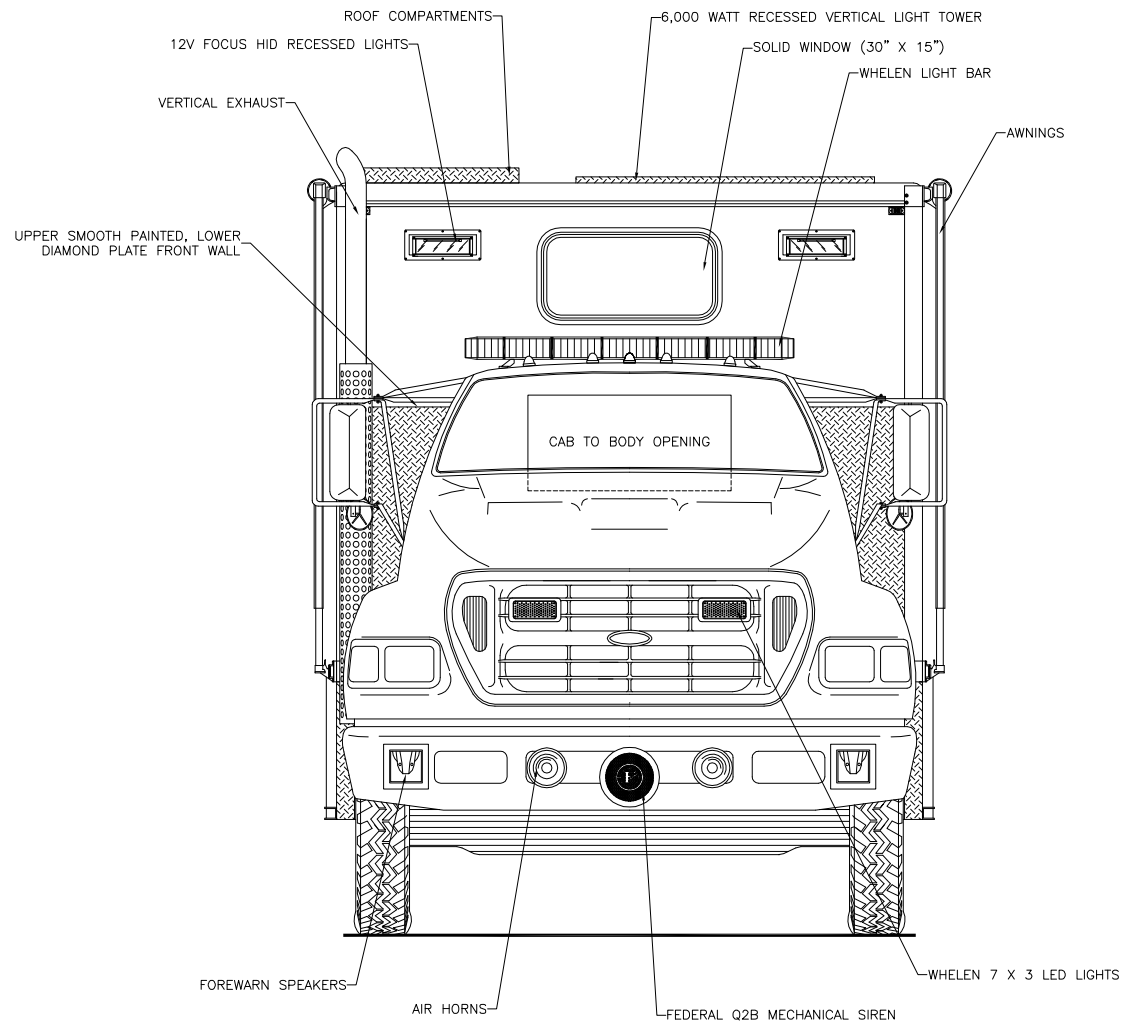
[Signature] DATE: 10/06/08

REVISION 1	NS - 12/24/08
REVISION 2	NS - 01/22/09
REVISION 3	NS - 02/10/09
REVISION 4	-
REVISION 5	-

PRODDWG\LIBERTY2777\CREW18\12\NS\100608

EMERGENCY VEHICLES, INC.

*Liberty Fire Company
New Holland, Pennsylvania*



Front View

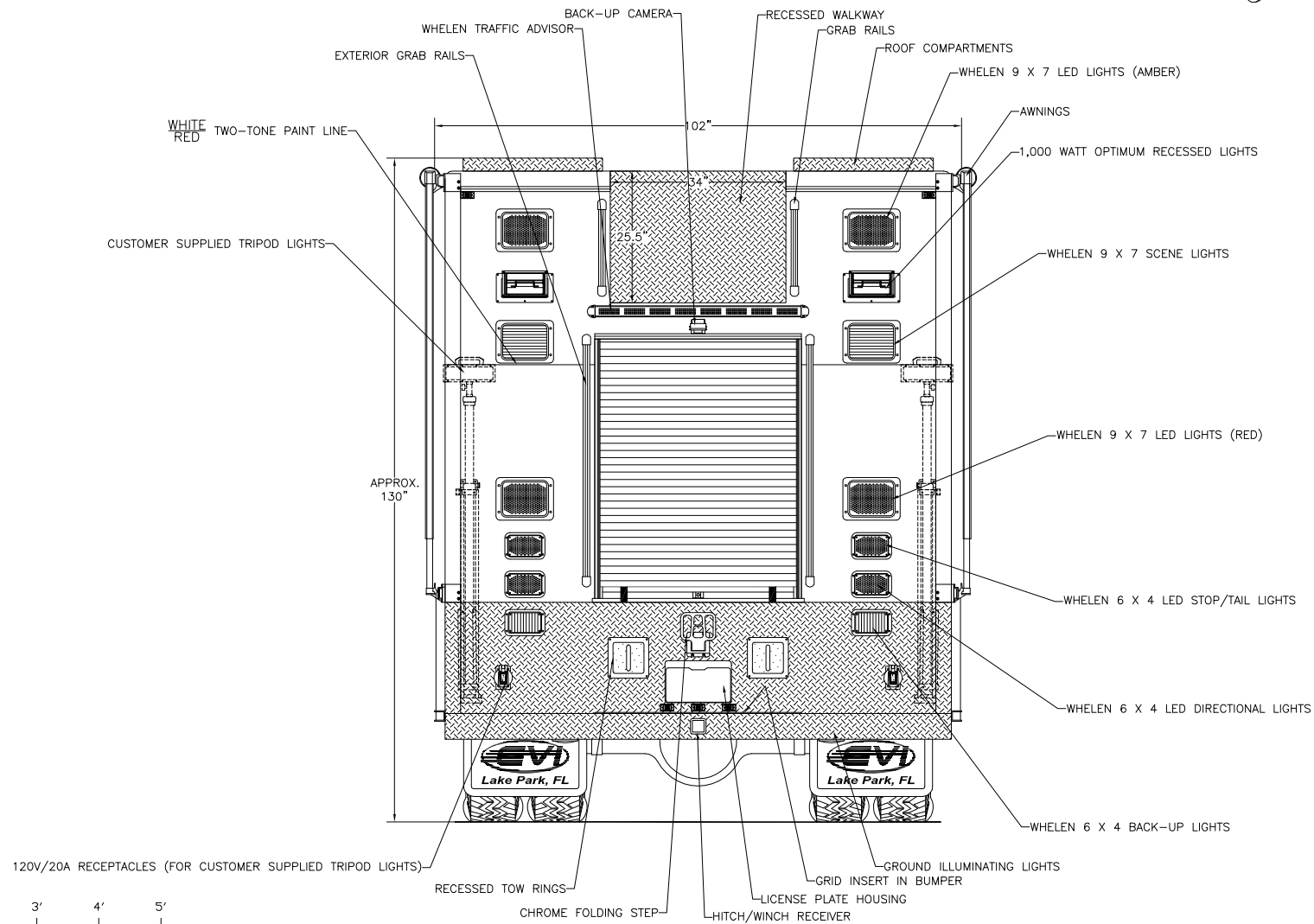
THESE DESIGN/ENGINEERING DRAWING(S) ARE THE PROPERTY OF EMERGENCY VEHICLES, INC. THEY ARE PROPRIETARY, AND ARE FOR THE EXCLUSIVE USE OF YOUR ENTITY. ANY DIVULGING OF THIS DATA TO A THIRD PARTY IS PROHIBITED.

Wing DATE: 10/06/08

REVISION 1	NS - 12/24/08
REVISION 2	NS - 01/22/09
REVISION 3	NS - 02/10/09
REVISION 4	NS - 03/03/09
REVISION 5	NS - 06/16/09

EMERGENCY VEHICLES, INC.

*Liberty Fire Company
New Holland, Pennsylvania*



Rear View

THESE DESIGN/ENGINEERING DRAWING(S) ARE THE PROPERTY OF EMERGENCY VEHICLES, INC. THEY ARE PROPRIETARY AND ARE FOR THE EXCLUSIVE USE OF YOUR ENTITY. ANY DIVULGING OF THIS DATA TO A THIRD PARTY IS PROHIBITED.			
			DATE: 10/06/08
REVISION 1	NS	12/24/08	
REVISION 2	NS	01/22/09	
REVISION 3	NS	02/10/09	
REVISION 4	NS	03/03/09	
REVISION 5	-		

PRODDWG\LIBERTY2777\CREW18\10\NS\100608