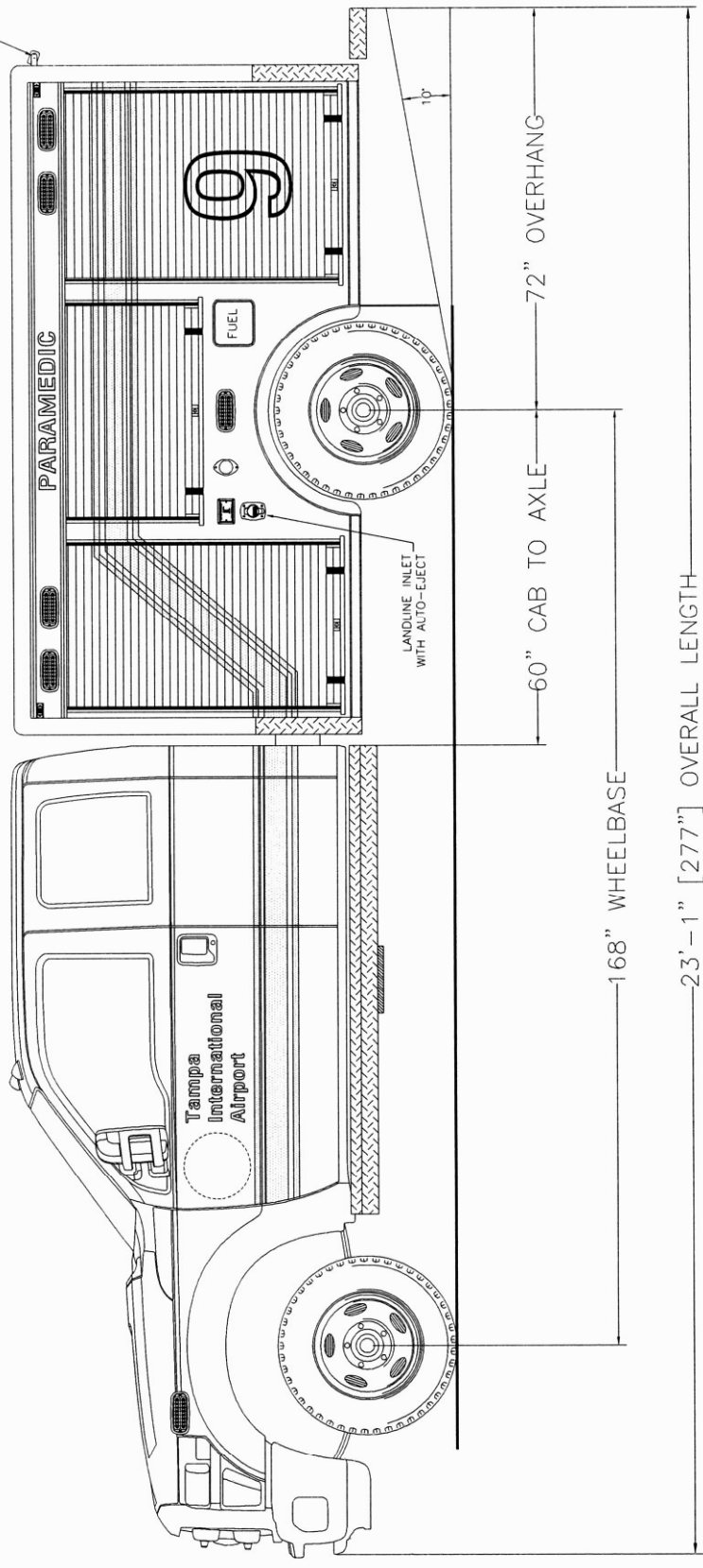


Hillsborough County Aviation Authority
Tampa, Florida



705 13TH STREET, LAKE PARK, FL
800-848-6652



THESE DESIGN/ENGINEERING DRAWINGS ARE THE PROPERTY OF EMERGENCY VEHICLES, INC. THEY ARE TO BE USED FOR THE EXCLUSIVE USE OF YOUR ENTITY. ANY DIVULGING OF THIS DATA TO A THIRD PARTY IS PROHIBITED.

DATE: 08/19/15

REVISION 1	NS - 07/12/17
REVISION 2	-
REVISION 3	-
REVISION 4	-
REVISION 5	-

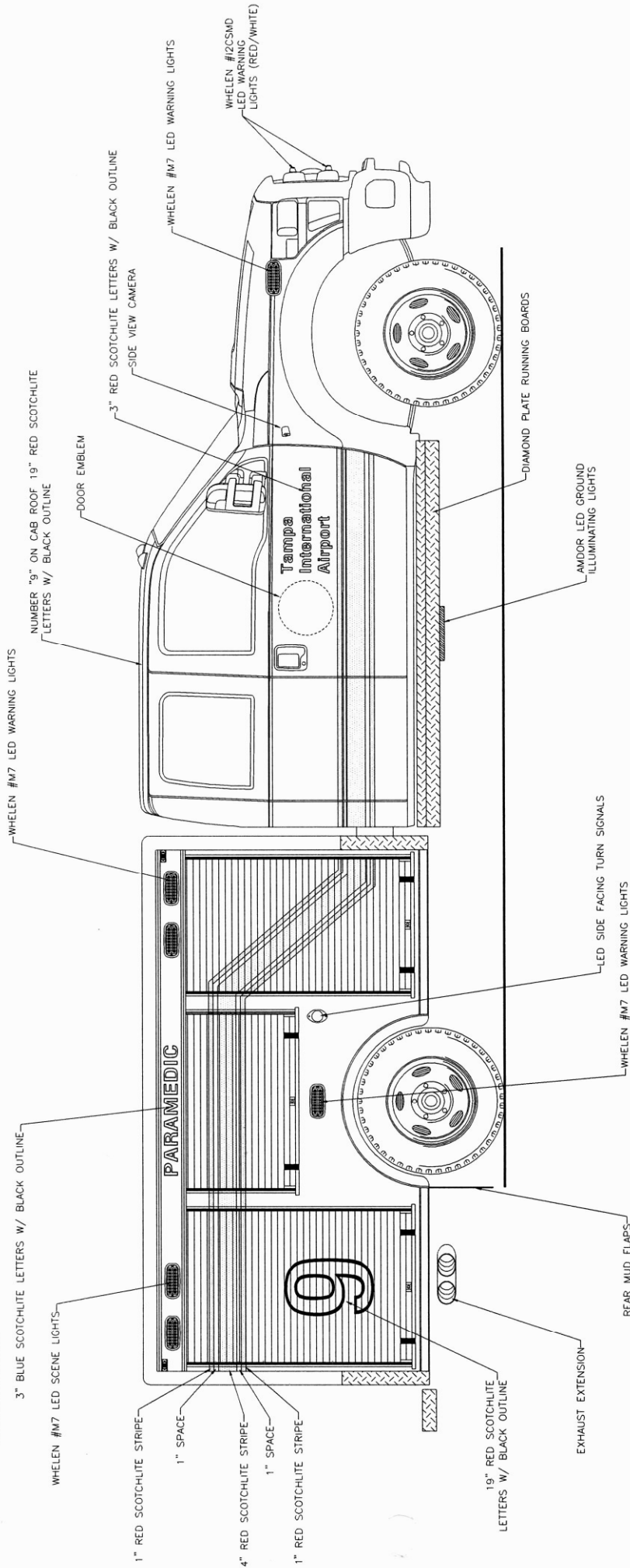


Streetside Overall

Hillsborough County Aviation Authority Tampa, Florida



705 13TH STREET, LAKE PARK, FL
800-848-6652



THESE DESIGN/ENGINEERING DRAWINGS ARE THE PROPERTY OF EMERGENCY VEHICLES, INC. THEY ARE PROPRIETARY, AND ARE FOR THE EXCLUSIVE USE OF THE CLIENT. ANY REUSE OF THIS DATA TO A THIRD PARTY IS PROHIBITED.

E. Evans DATE: 08/19/15

REVISION 1	NS - 01/12/17
REVISION 2	-
REVISION 3	-
REVISION 4	-
REVISION 5	-



Curbside Overall

Hillsborough County Aviation Authority Tampa, Florida

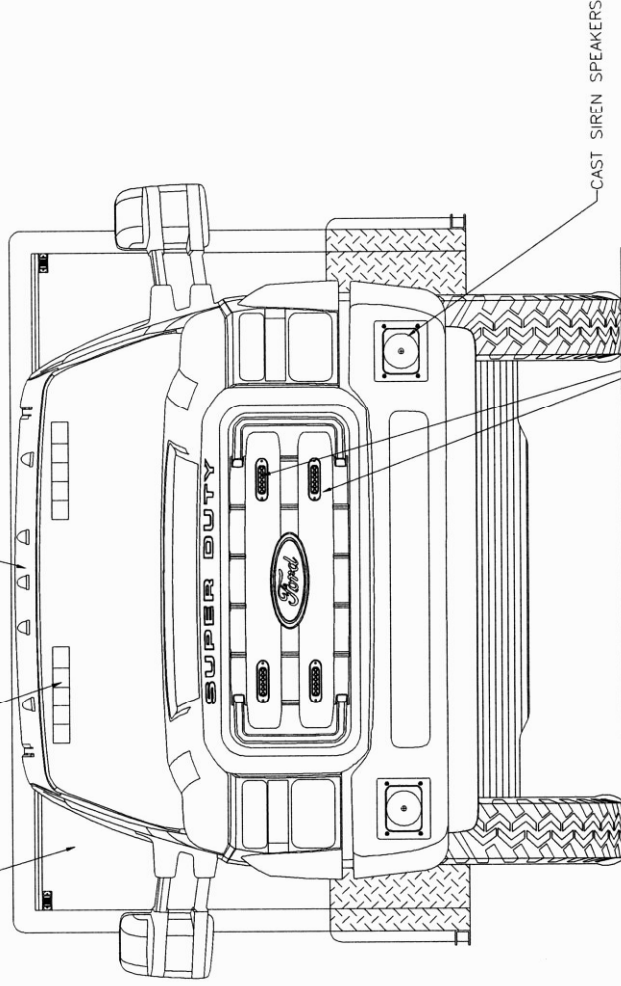


705 13TH STREET, LAKE PARK, FL
800-848-6652

NUMBER "9" ON CAB ROOF 19" RED SCOTCHLITE
LETTERS W/ BLACK OUTLINE

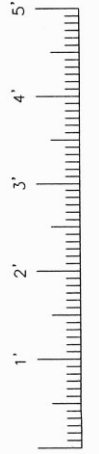
WHELEN INNER LIGHT BARS

SMOOTH PAINTED FRONT WALL



CAST SIREN SPEAKERS

WHELEN #12CSMD LED WARNING LIGHTS (RED/WHITE)



THESE DESIGN/ENGINEERING DRAWINGS ARE THE PROPERTY OF EVI ENGINEERING, INC. AND ARE PROPRIETARY AND ARE FOR THE EXCLUSIVE USE OF YOUR ENTITY. ANY DIVULGING OF THIS DATA TO A THIRD PARTY IS PROHIBITED.

EJ Ponce DATE: 08/19/15

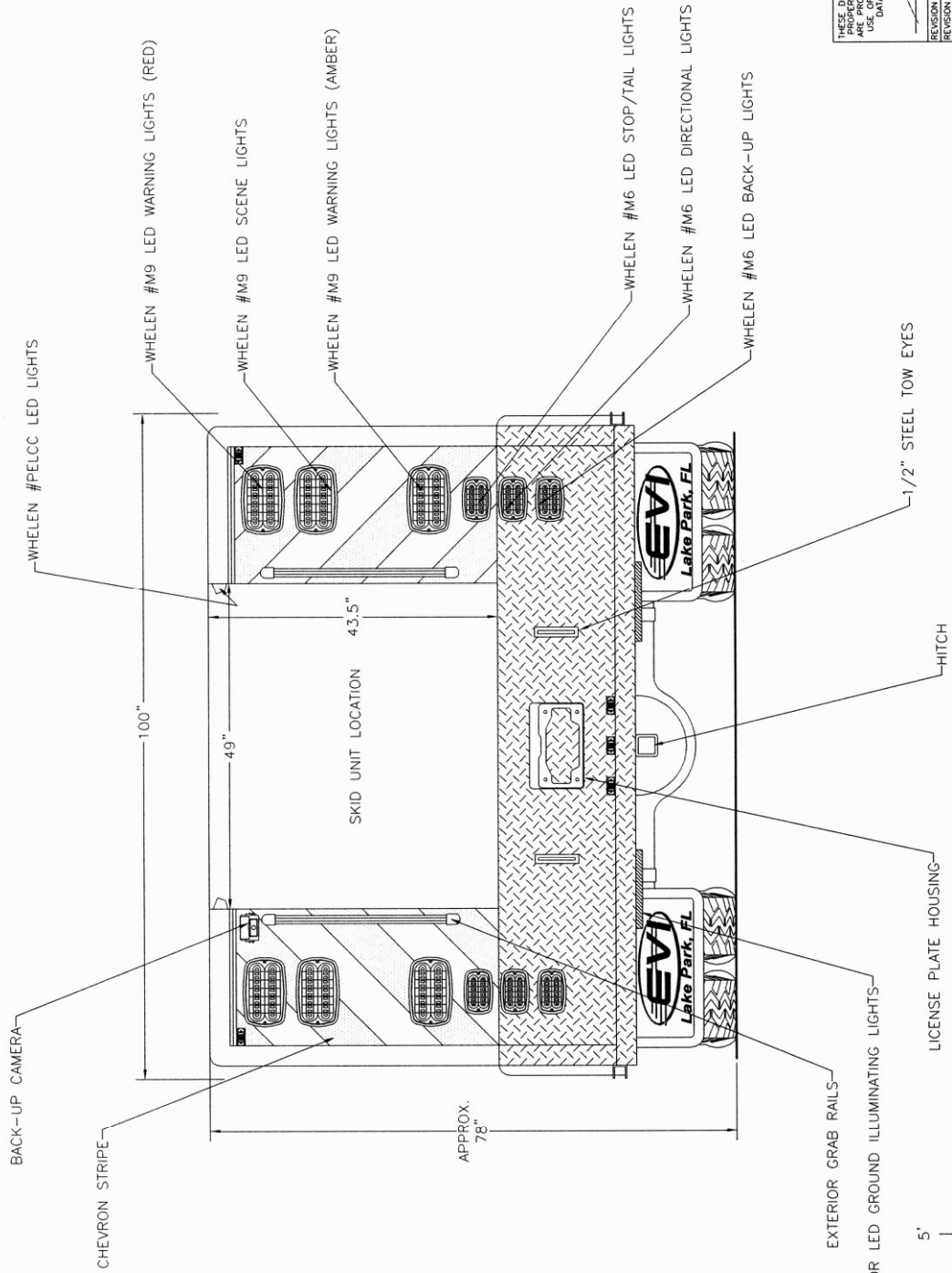
REVISION 1	NS - 01/12/17
REVISION 2	-
REVISION 3	-
REVISION 4	-
REVISION 5	-

Front View

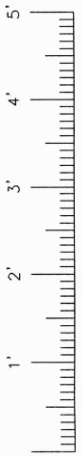
Hillsborough County Aviation Authority Tampa, Florida



705 13TH STREET, LAKE PARK, FL
800-848-6652



MAX.
HEIGHT
78"



THESE DESIGN/ENGINEERING DRAWINGS ARE THE PROPERTY OF EMERGENCY VEHICLES, INC. THEY ARE PROPRIETARY, AND ARE FOR THE EXCLUSIVE USE OF THE CLIENT. ANY REUSE OR REPRODUCTION OF THIS DATA TO A THIRD PARTY IS PROHIBITED.

E. J. [Signature] DATE: 08/19/15

REVISION 1	NS - 07/17/17
REVISION 2	-
REVISION 3	-
REVISION 4	-
REVISION 5	-

Rear View