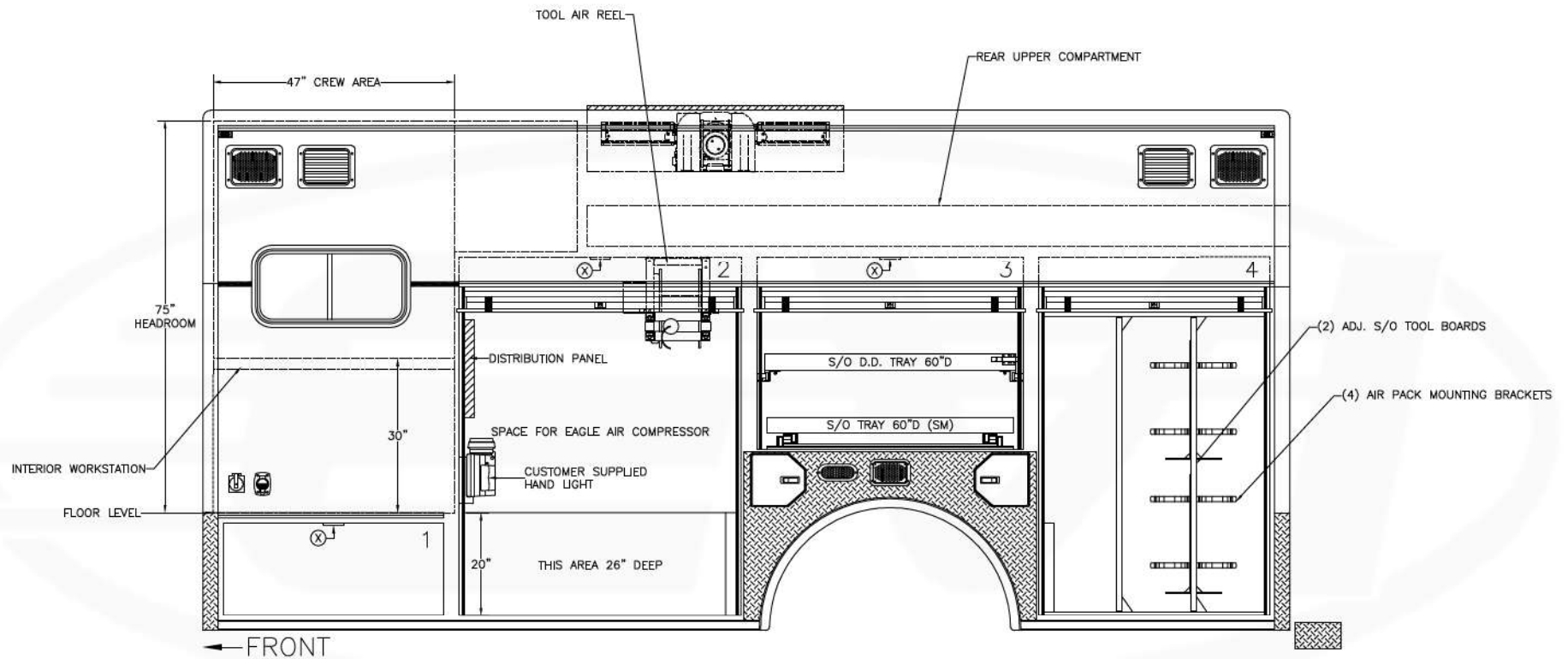


**EMERGENCY VEHICLES, INC.**

*Amogerone Fire Co. #1  
Greenwich, Connecticut*



**COMPARTMENT LEGEND**  
 COMPT. #1 - 43"W X 18"H X MAX. DEPTH  
 COMPT. #2 - 55"W X 70"H X 26"/94"D  
 COMPT. #3 - 52"W X 37.625"H X 94"D  
 COMPT. #4 - 45"W X 70"H X 26"D  
 (X) - 4" RECESSED COMPARTMENT LIGHT



*Streetside Body*

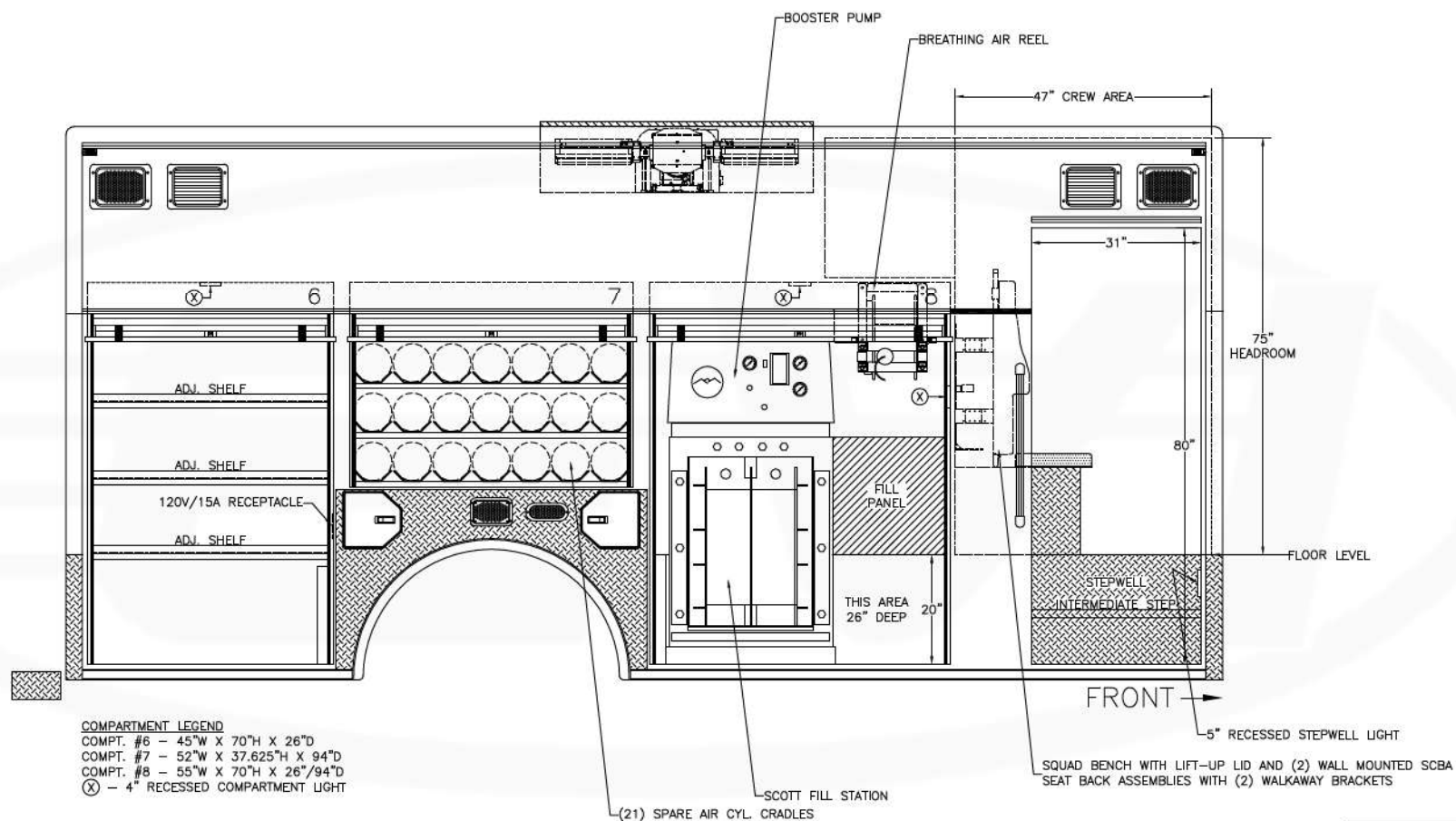
THESE DESIGN/ENGINEERING DRAWING(S) ARE THE PROPERTY OF EMERGENCY VEHICLES, INC. THEY ARE PROPRIETARY, AND ARE FOR THE EXCLUSIVE USE OF YOUR ENTITY. ANY DIVULGING OF THIS DATA TO A THIRD PARTY IS PROHIBITED.

*E. J. Pomeroy* DATE: 12/15/09

REVISION 1	NS - 01/11/10
REVISION 2	NS - 06/13/11
REVISION 3	NS - 07/14/11
REVISION 4	-
REVISION 5	-

PRODDWG\F\2830\_AMOGERONE\_CT\18CREW\07\NS\121509

*Amogerone Fire Co. #1  
Greenwich, Connecticut*



COMPARTMENT LEGEND  
 COMPT. #6 - 45"W X 70"H X 26"D  
 COMPT. #7 - 52"W X 37.625"H X 94"D  
 COMPT. #8 - 55"W X 70"H X 26"/94"D  
 (X) - 4" RECESSED COMPARTMENT LIGHT



*Curbside Body*

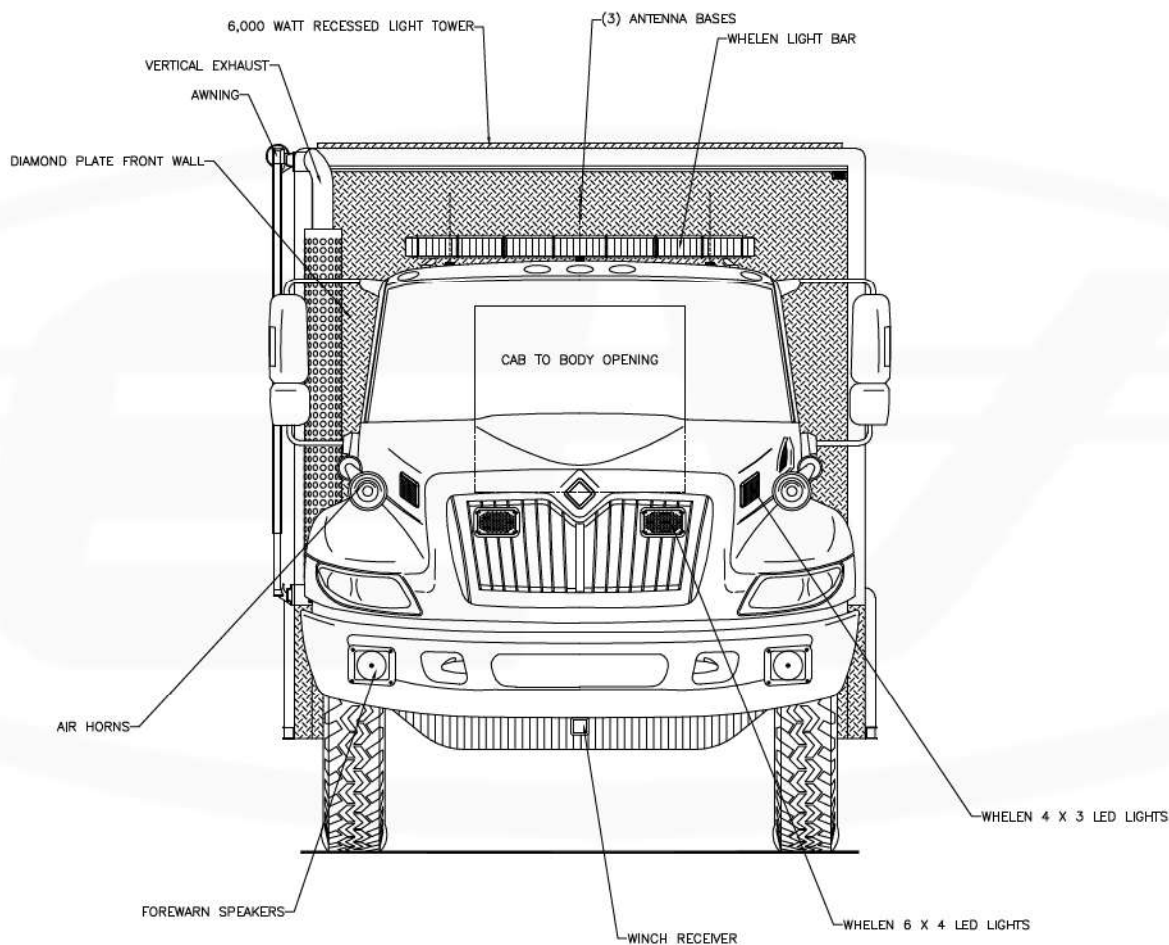
THESE DESIGN/ENGINEERING DRAWING(S) ARE THE PROPERTY OF EMERGENCY VEHICLES, INC. THEY ARE PROPRIETARY, AND ARE FOR THE EXCLUSIVE USE OF YOUR ENTITY. ANY DIVULGING OF THIS DATA TO A THIRD PARTY IS PROHIBITED.

*EP* DATE: 12/15/09

REVISION 1	NS - 01/11/10
REVISION 2	NS - 06/13/11
REVISION 3	NS - 07/14/11
REVISION 4	-
REVISION 5	-

**EMERGENCY VEHICLES, INC.**

*Amogerone Fire Co. #1  
Greenwich, Connecticut*

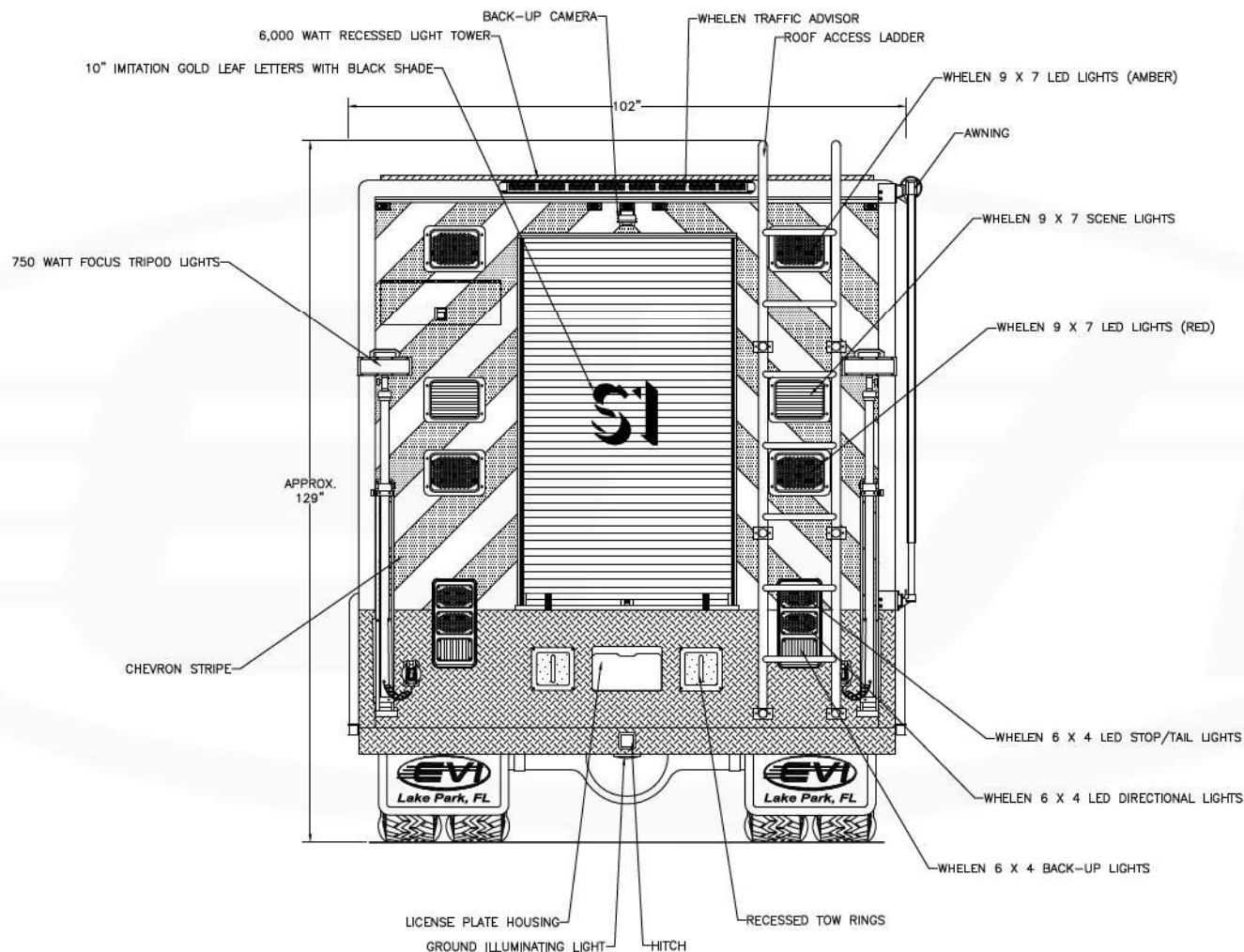


*Front View*

THESE DESIGN/ENGINEERING DRAWING(S) ARE THE PROPERTY OF EMERGENCY VEHICLES, INC. THEY ARE PROPRIETARY, AND ARE FOR THE EXCLUSIVE USE OF YOUR ENTITY. ANY DIVULGING OF THIS DATA TO A THIRD PARTY IS PROHIBITED.

*Signature* DATE: 12/15/09

REVISION 1	NS - 01/11/10
REVISION 2	NS - 06/13/11
REVISION 3	NS - 07/14/11
REVISION 4	-
REVISION 5	-



*Rear View*

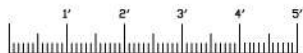
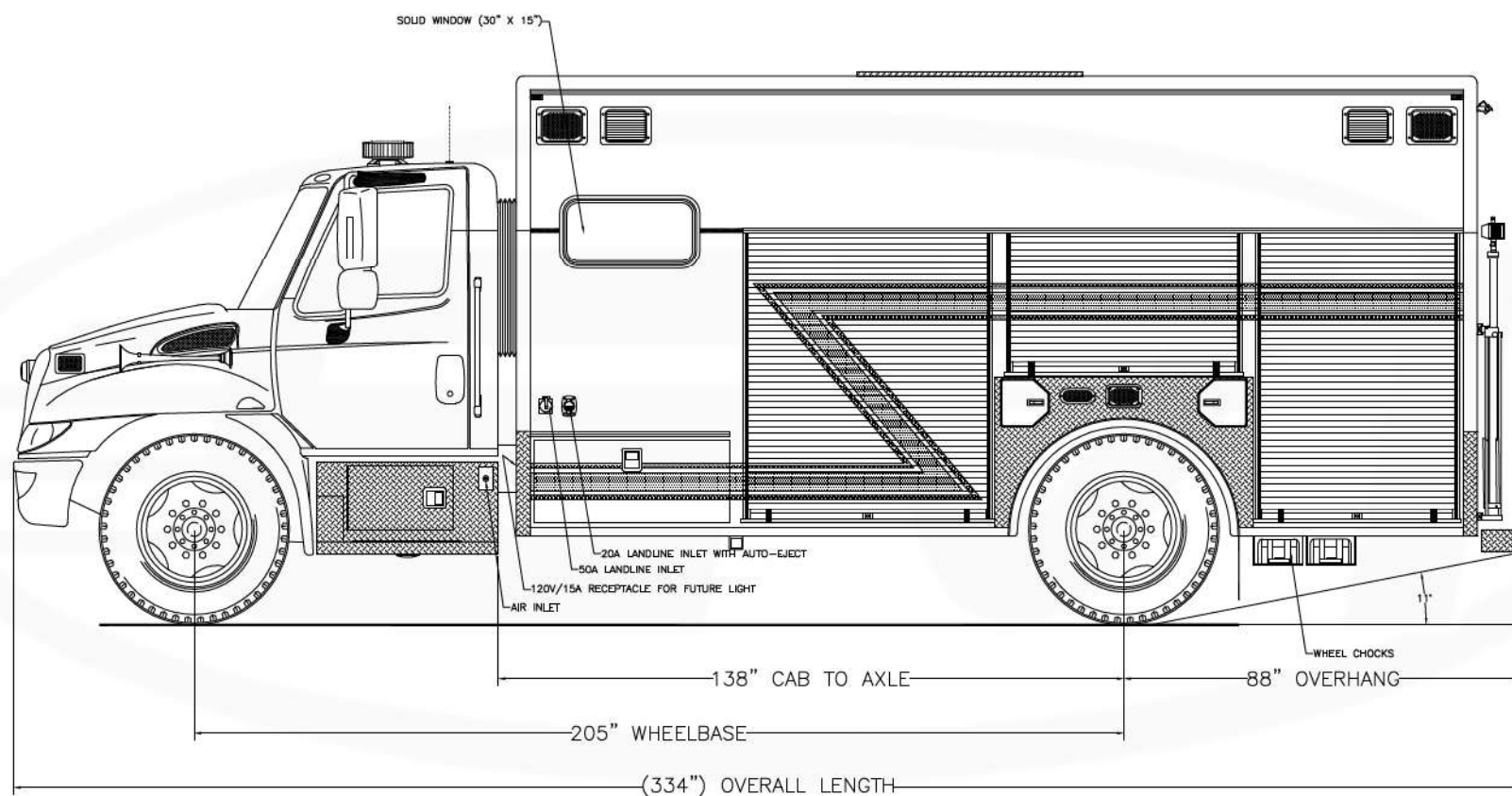
THESE DESIGN/ENGINEERING DRAWING(S) ARE THE PROPERTY OF EMERGENCY VEHICLES, INC. THEY ARE PROPRIETARY, AND ARE FOR THE EXCLUSIVE USE OF YOUR ENTITY. ANY DIVULGING OF THIS DATA TO A THIRD PARTY IS PROHIBITED.

*E. V. Inc.* DATE: 12/15/09

REVISION 1	NS - 01/11/10
REVISION 2	NS - 06/13/11
REVISION 3	NS - 07/14/11
REVISION 4	-
REVISION 5	-

*EMERGENCY VEHICLES, INC.*

*Amogerone Fire Co. #1  
Greenwich, Connecticut*



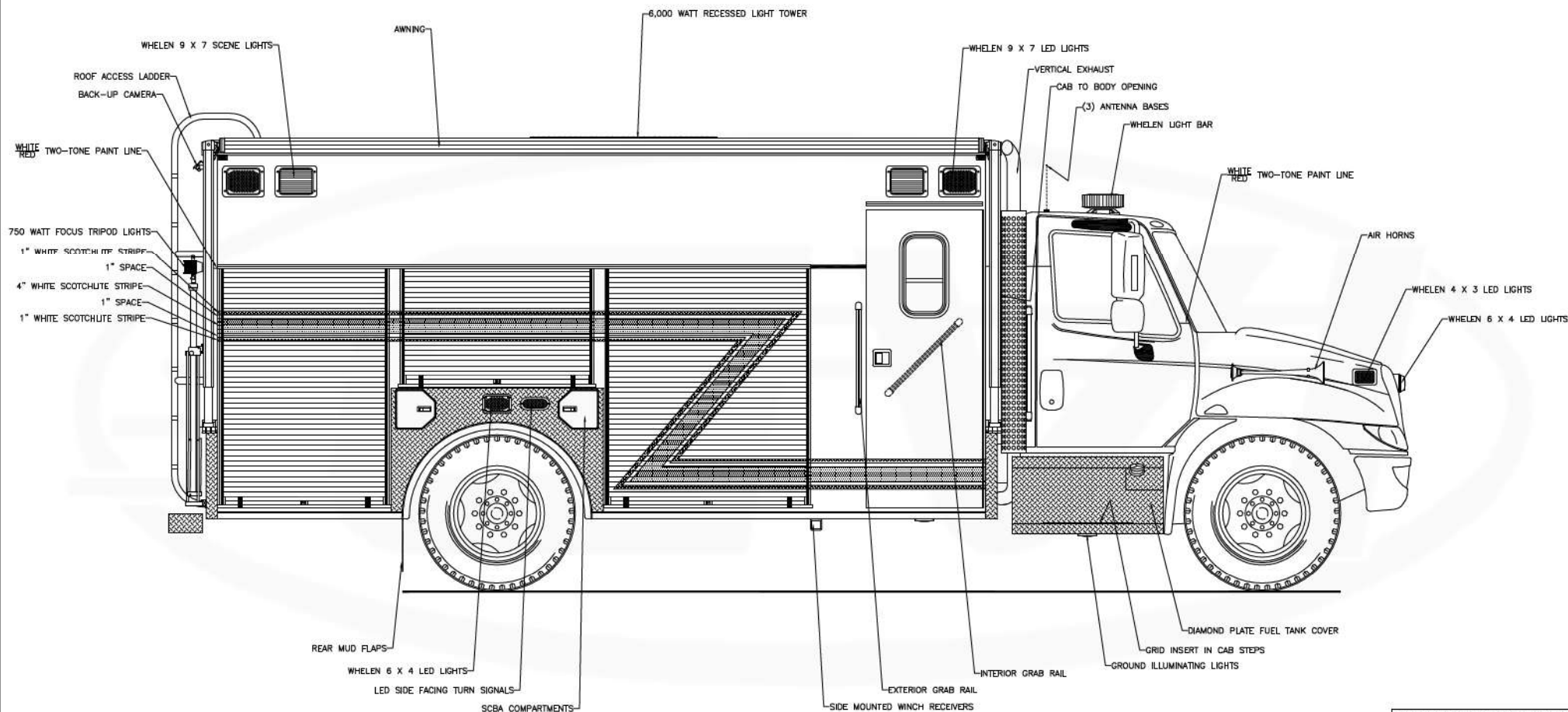
*Streetside Overall*

THESE DESIGN/ENGINEERING DRAWING(S) ARE THE PROPERTY OF EMERGENCY VEHICLES, INC. THEY ARE PROPRIETARY, AND ARE FOR THE EXCLUSIVE USE OF YOUR ENTITY. ANY DIVULGING OF THIS DATA TO A THIRD PARTY IS PROHIBITED.

DATE:	12/15/09
REVISION 1	NS - 01/11/10
REVISION 2	NS - 06/13/11
REVISION 3	NS - 07/14/11
REVISION 4	NS - 10/14/11
REVISION 5	-

*EMERGENCY VEHICLES, INC.*

*Amogerone Fire Co. #1  
Greenwich, Connecticut*



*Curbside Overall*

THESE DESIGN/ENGINEERING DRAWING(S) ARE THE PROPERTY OF EMERGENCY VEHICLES, INC. THEY ARE PROPRIETARY, AND ARE FOR THE EXCLUSIVE USE OF YOUR ENTITY. ANY DUPLICATION OF THIS DATA TO A THIRD PARTY IS PROHIBITED.

DATE:	12/15/09
REVISION 1	NS - 01/11/10
REVISION 2	NS - 06/13/11
REVISION 3	NS - 07/14/11
REVISION 4	NS - 10/14/11
REVISION 5	-