

THESE DESIGN/ENGINEERING DRAWING(S) ARE THE PROPERTY OF EMERGENCY VEHICLES, INC. THEY ARE NOT TO BE REPRODUCED OR COPIED FOR ANY USE, OF YOUR ENTITY, ANY DIVISION OF THIS ENTITY, OR ANY OTHER ENTITY, WITHOUT THE WRITTEN DATA TO A THIRD PARTY IS PROHIBITED.

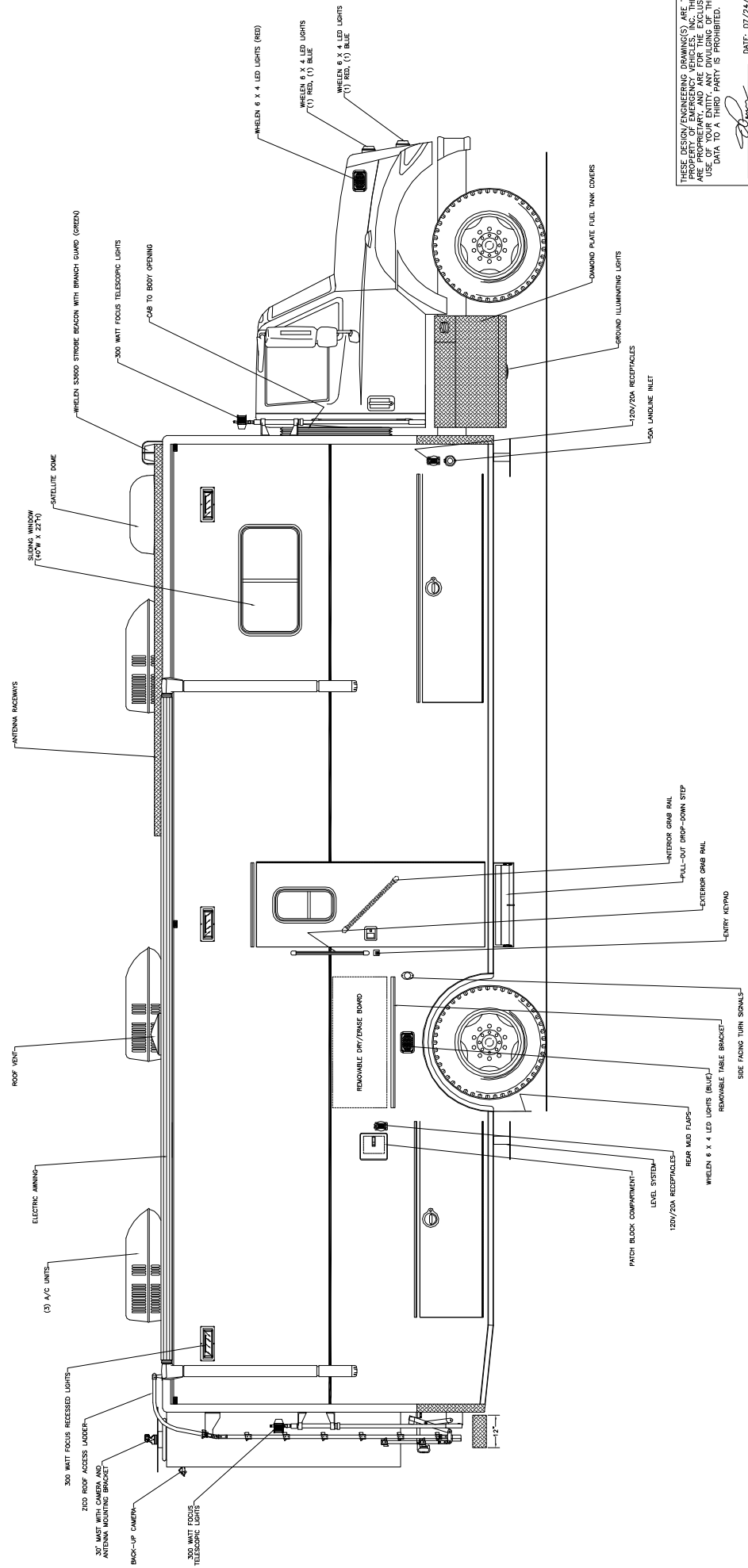
DATE: 07/24/08

REVISION 1	NS - 10/03/08
REVISION 2	NS - 10/15/08
REVISION 3	NS - 10/27/08
REVISION 4	-
REVISION 5	-



EMERGENCY VEHICLES, INC.

*Layton City Police Department
Layton, Utah*



THESE DESIGN/ENGINEERING DRAWINGS ARE THE PROPERTY OF EMERGENCY VEHICLES, INC. THEY ARE NOT TO BE REPRODUCED OR USED FOR ANY PURPOSES WITHOUT THE WRITTEN PERMISSION OF EMERGENCY VEHICLES, INC. USE OF YOUR ENTITY'S LOGO OR NAME IN ANY DRAWING OR DATA TO A THIRD PARTY IS PROHIBITED.

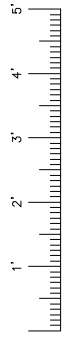
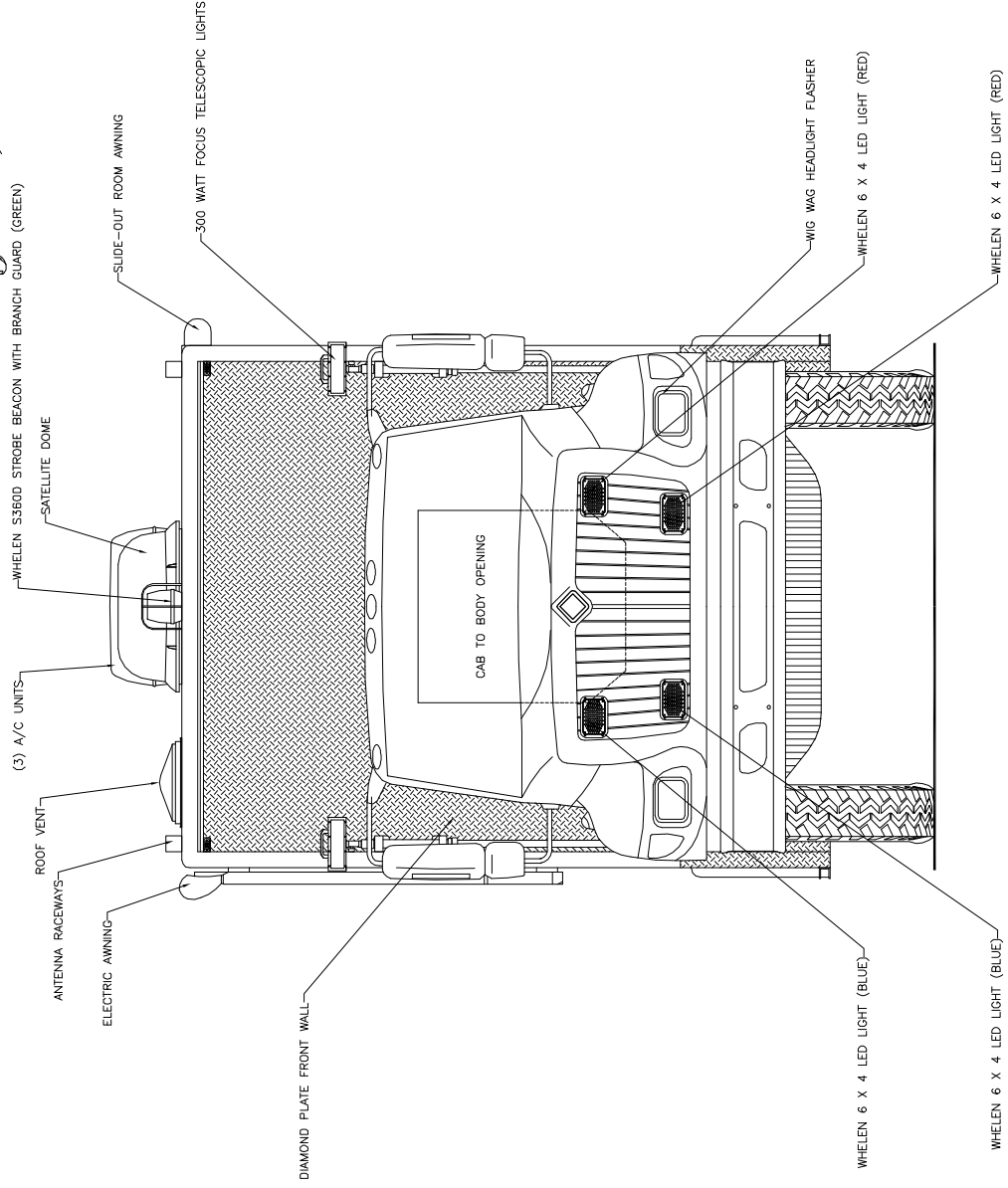
DATE: 07/24/08

REVISION 1	NS - 10/03/08
REVISION 2	NS - 10/27/08
REVISION 3	NS - 10/27/08
REVISION 4	NS - 11/24/08
REVISION 5	-

Curbside Overall



*Layton City Police Department
Layton, Utah*

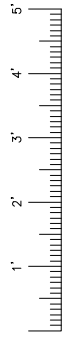
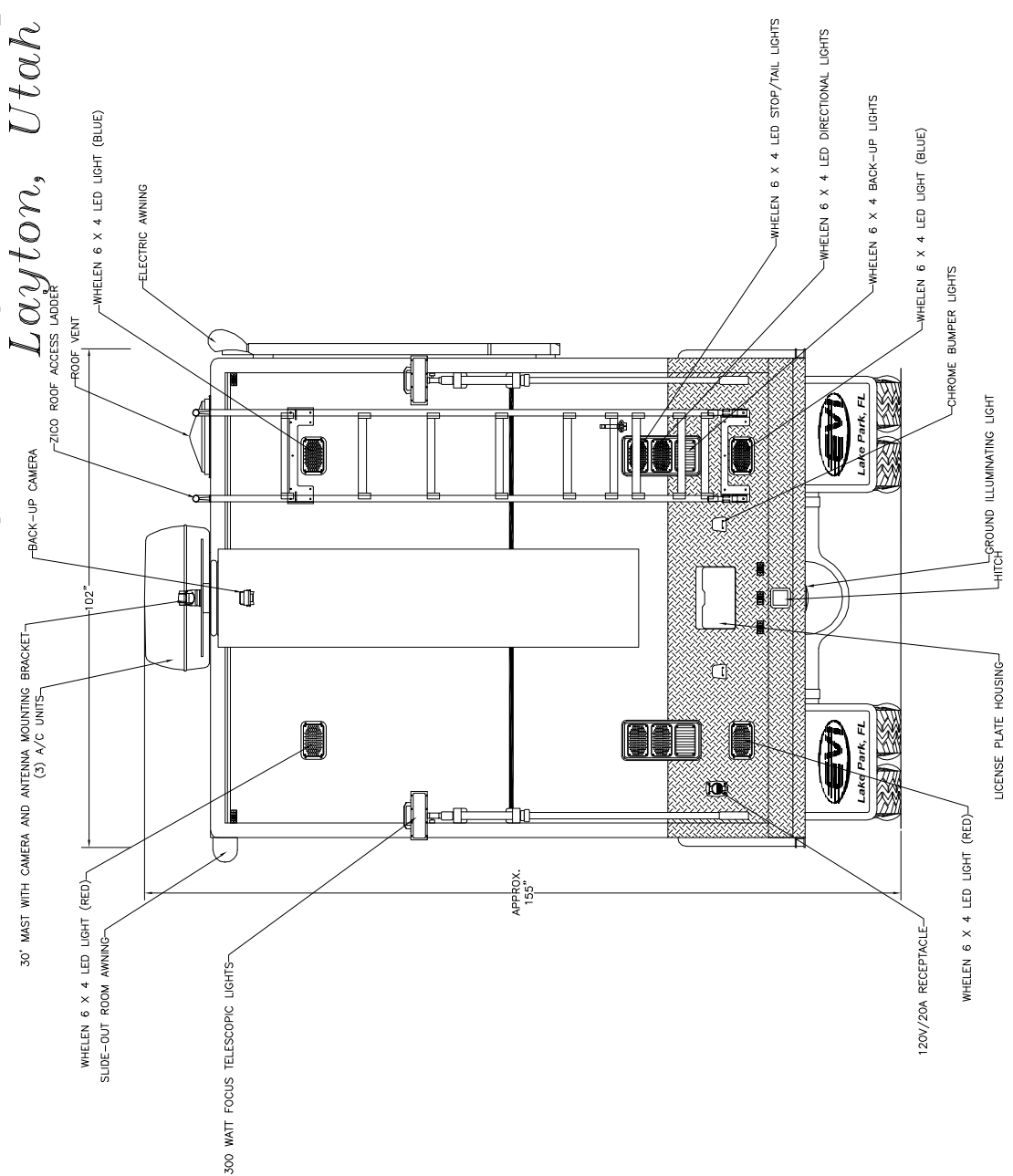


Front View

THESE DESIGN/ENGINEERING DRAWINGS ARE THE PROPERTY OF EMERGENCY VEHICLES, INC. THEY ARE NOT TO BE REPRODUCED OR COPIED FOR ANY USE, OF YOUR ENTITY, ANY DIVULGING OF THIS DATA TO A THIRD PARTY IS PROHIBITED.

DATE: 07/24/08

REVISION 1	NS - 10/03/08
REVISION 2	NS - 11/17/08
REVISION 3	NS - 10/27/08
REVISION 4	NS - 11/24/08
REVISION 5	-



Rear View

THESE DESIGN/ENGINEERING DRAWINGS ARE THE PROPERTY OF EMERGENCY VEHICLES, INC. THEY ARE NOT TO BE REPRODUCED OR COPIED IN ANY MANNER WITHOUT THE WRITTEN PERMISSION OF EMERGENCY VEHICLES, INC. ANY UNAUTHORIZED USE OF YOUR ENTITY, ANY DIVULGING OF THIS DATA TO A THIRD PARTY IS PROHIBITED.

DATE: 07/24/08

REVISION 1	NS - 10/03/08
REVISION 2	NS - 11/17/08
REVISION 3	NS - 10/27/08
REVISION 4	NS - 11/24/08
REVISION 5	-