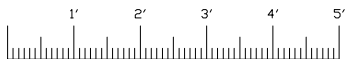
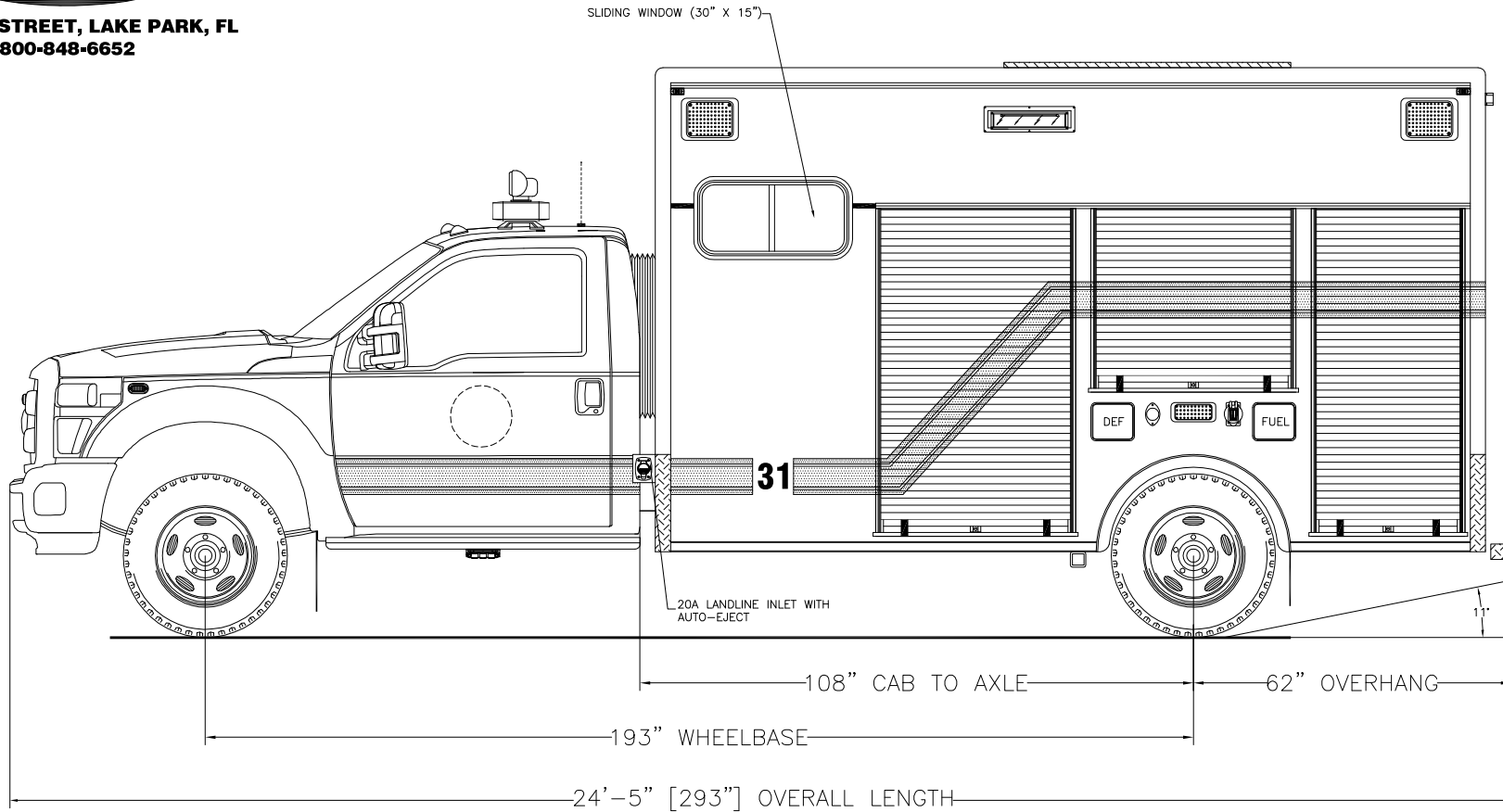




705 13TH STREET, LAKE PARK, FL
800-848-6652

South Monterey County Fire Protection District



Streetside Overall

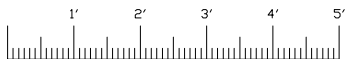
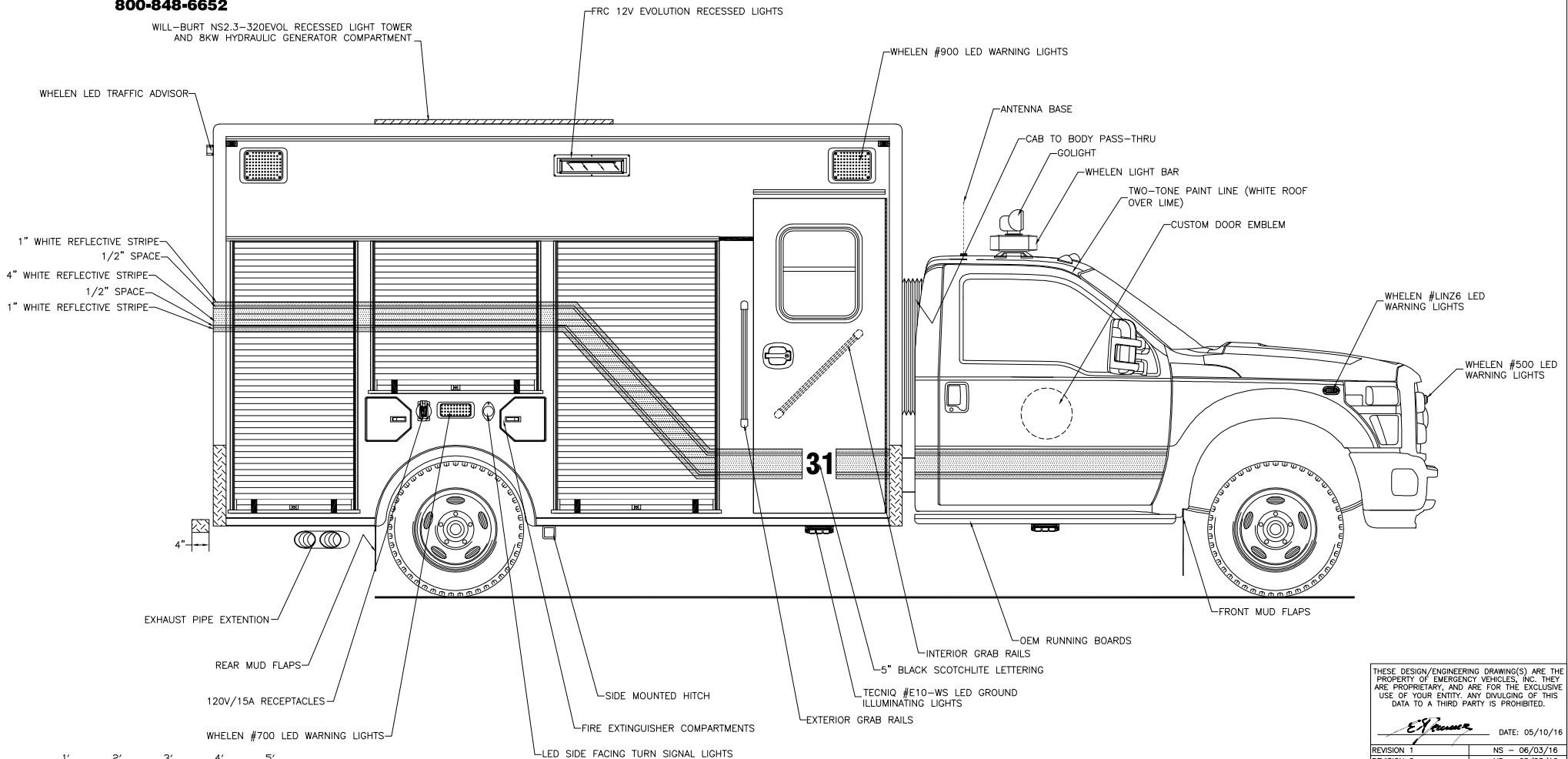
THESE DESIGN/ENGINEERING DRAWING(S) ARE THE PROPERTY OF EMERGENCY VEHICLES, INC. THEY ARE PROPRIETARY, AND ARE FOR THE EXCLUSIVE USE OF YOUR ENTITY. ANY DIVULGING OF THIS DATA TO A THIRD PARTY IS PROHIBITED.

		DATE: 05/10/16
REVISION 1	NS	06/03/16
REVISION 2	NS	08/03/16
REVISION 3	NS	08/10/16
REVISION 4	-	-
REVISION 5	-	-



**705 13TH STREET, LAKE PARK, FL
800-848-6652**

South Monterey County Fire Protection District



Curbside Overall

THESE DESIGN/ENGINEERING DRAWING(S) ARE THE PROPERTY OF EMERGENCY VEHICLES, INC. THEY ARE PROPRIETARY, AND ARE FOR THE EXCLUSIVE USE OF YOUR ENTITY. ANY DIVULGING OF THIS DATA TO A THIRD PARTY IS PROHIBITED.

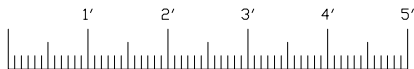
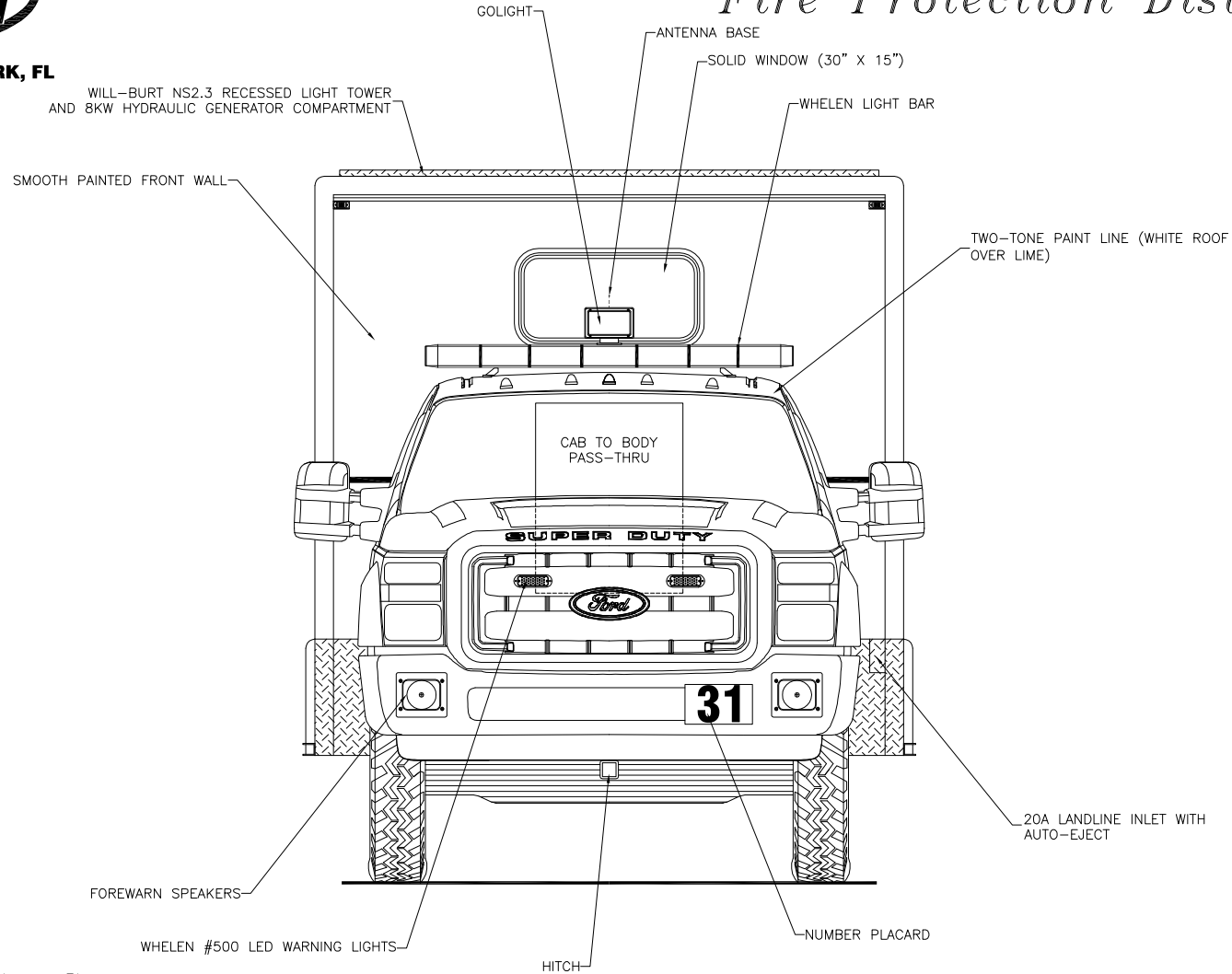
EVI DATE: 05/10/16

REVISION 1	NS - 06/03/16
REVISION 2	NS - 08/03/16
REVISION 3	NS - 08/10/16
REVISION 4	-
REVISION 5	-



705 13TH STREET, LAKE PARK, FL
800-848-6652

South Monterey County Fire Protection District



Front View

THESE DESIGN/ENGINEERING DRAWING(S) ARE THE PROPERTY OF EMERGENCY VEHICLES, INC. THEY ARE PROPRIETARY, AND ARE FOR THE EXCLUSIVE USE OF YOUR ENTITY. ANY DIVULGING OF THIS DATA TO A THIRD PARTY IS PROHIBITED.

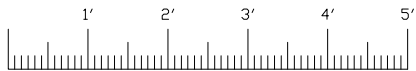
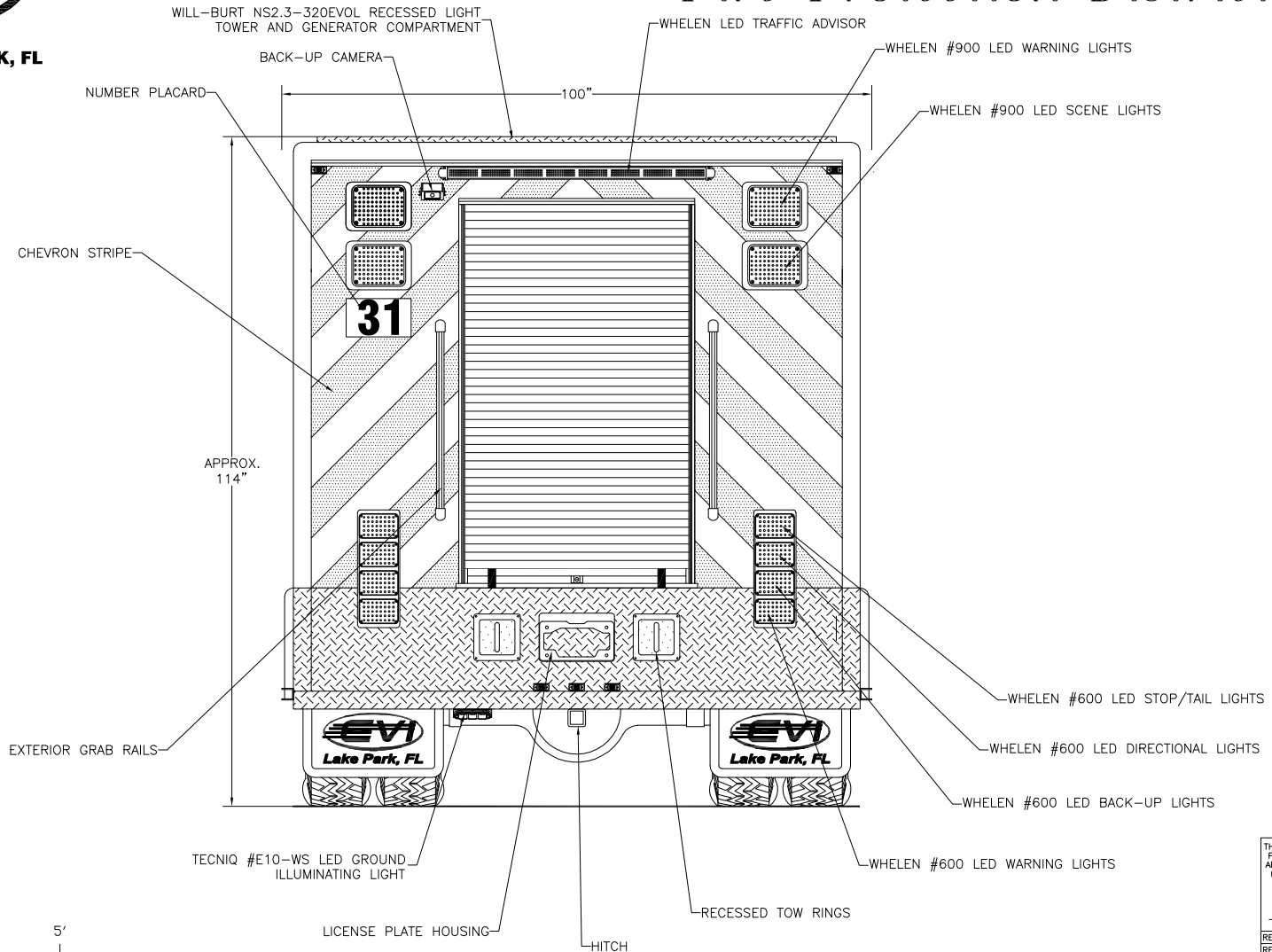
EVI DATE: 05/10/16

REVISION 1	NS - 06/03/16
REVISION 2	NS - 08/03/16
REVISION 3	-
REVISION 4	-
REVISION 5	-



705 13TH STREET, LAKE PARK, FL
800-848-6652

South Monterey County Fire Protection District



Rear View

THESE DESIGN/ENGINEERING DRAWING(S) ARE THE PROPERTY OF EMERGENCY VEHICLES, INC. THEY ARE PROPRIETARY, AND ARE FOR THE EXCLUSIVE USE OF YOUR ENTITY. ANY DIVULGING OF THIS DATA TO A THIRD PARTY IS PROHIBITED.

EVI DATE: 05/10/16

REVISION 1	NS - 06/03/16
REVISION 2	NS - 08/03/16
REVISION 3	-
REVISION 4	-
REVISION 5	-