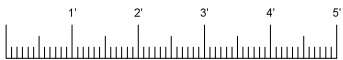
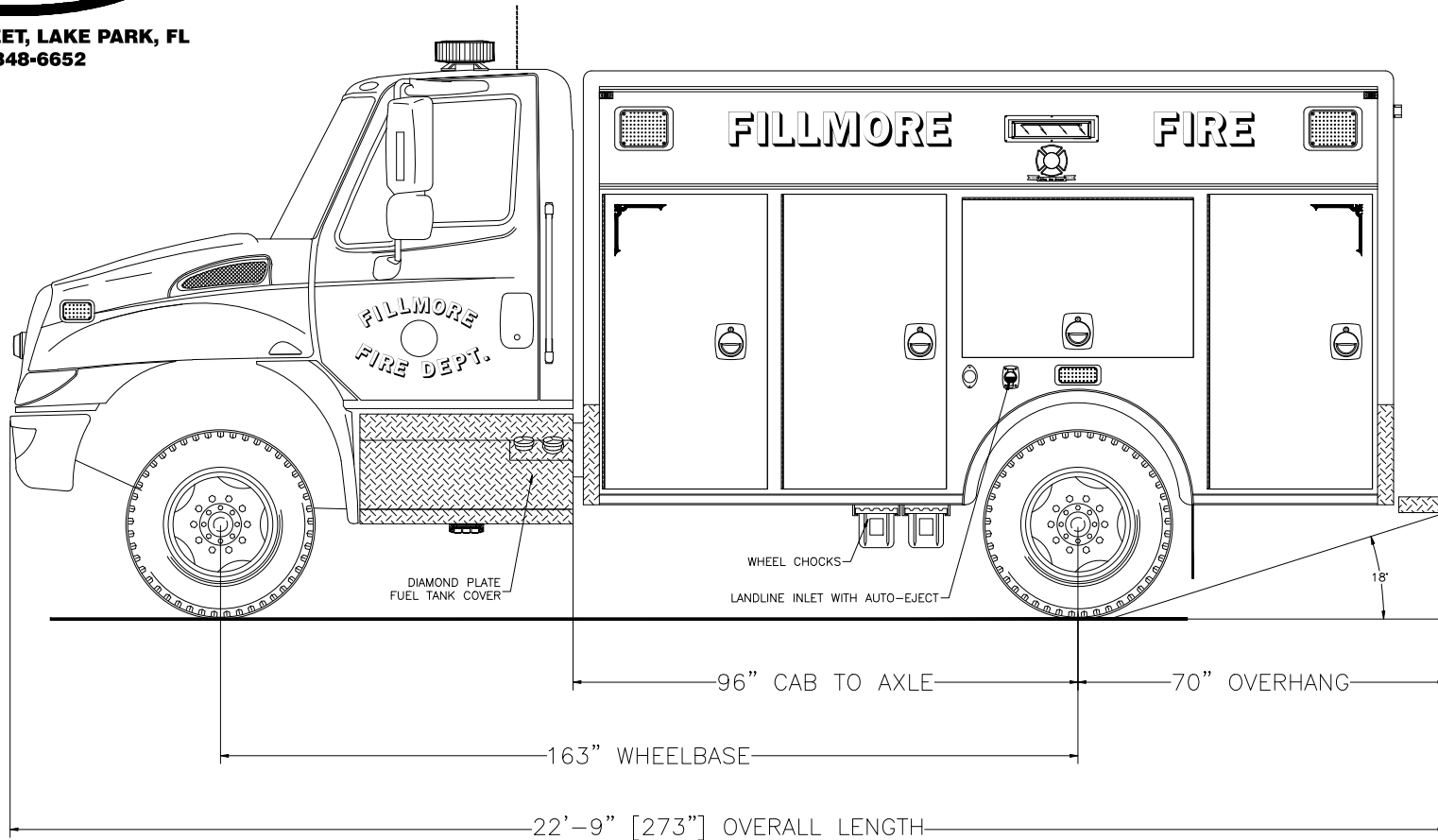




705 13TH STREET, LAKE PARK, FL  
800-848-6652

*Fillmore Fire Rescue  
Fillmore, California*



*Streetside Overall*

THESE DESIGN/ENGINEERING DRAWING(S) ARE THE PROPERTY OF EMERGENCY VEHICLES, INC. THEY ARE PROPRIETARY, AND ARE FOR THE EXCLUSIVE USE OF YOUR ENTITY. ANY DIVULGING OF THIS DATA TO A THIRD PARTY IS PROHIBITED.

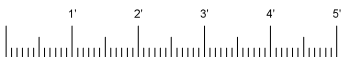
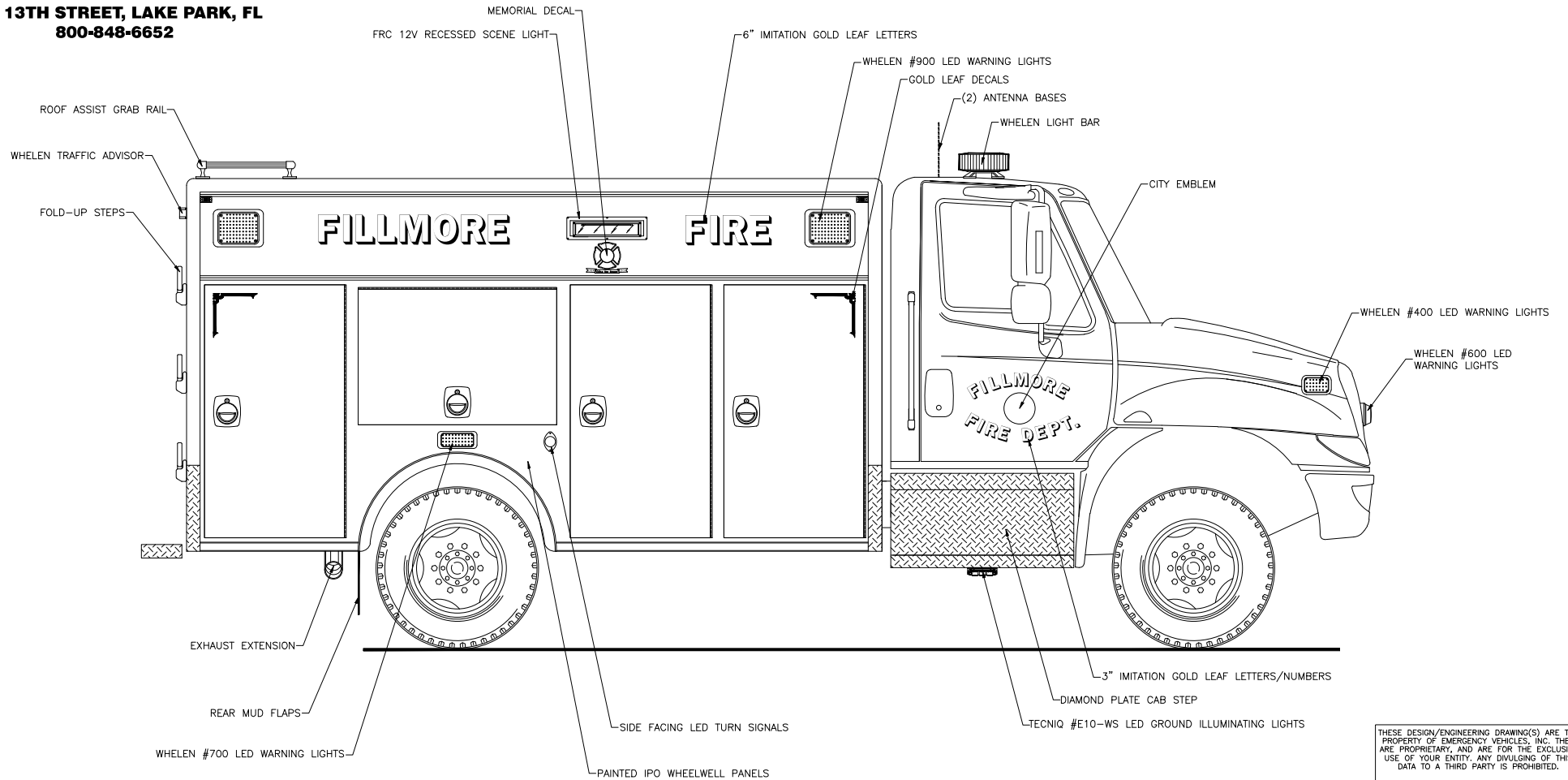
*E. J. [Signature]* DATE: 12/05/14

REVISION 1	NS - 02/19/15
REVISION 2	ACS - 05/28/15
REVISION 3	-
REVISION 4	-
REVISION 5	-



705 13TH STREET, LAKE PARK, FL  
800-848-6652

# Fillmore Fire Rescue Fillmore, California



## Curbside Overall

THESE DESIGN/ENGINEERING DRAWING(S) ARE THE PROPERTY OF EMERGENCY VEHICLES, INC. THEY ARE PROPRIETARY, AND ARE FOR THE EXCLUSIVE USE OF YOUR ENTITY. ANY DIVULGING OF THIS DATA TO A THIRD PARTY IS PROHIBITED.

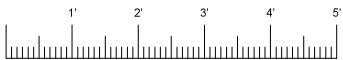
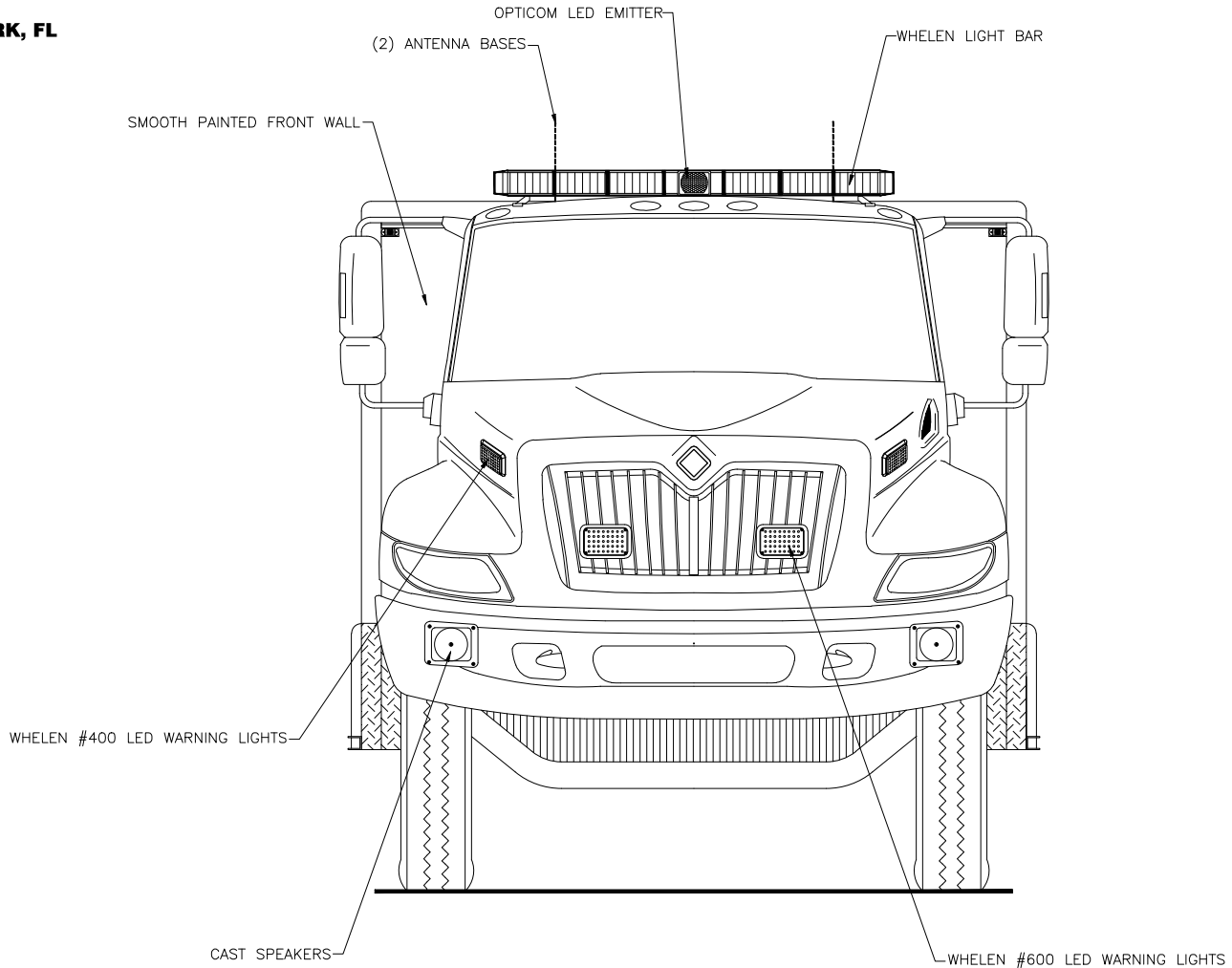
*E. J. ...* DATE: 12/05/14

REVISION 1	NS - 02/19/15
REVISION 2	ACS - 05/28/15
REVISION 3	-
REVISION 4	-
REVISION 5	-



705 13TH STREET, LAKE PARK, FL  
800-848-6652

*Fillmore Fire Rescue  
Fillmore, California*



*Front View*

THESE DESIGN/ENGINEERING DRAWING(S) ARE THE PROPERTY OF EMERGENCY VEHICLES, INC. THEY ARE PROPRIETARY AND ARE FOR THE EXCLUSIVE USE OF YOUR ENTITY. ANY DIVULGING OF THIS DATA TO A THIRD PARTY IS PROHIBITED.

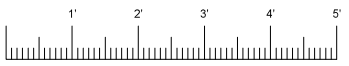
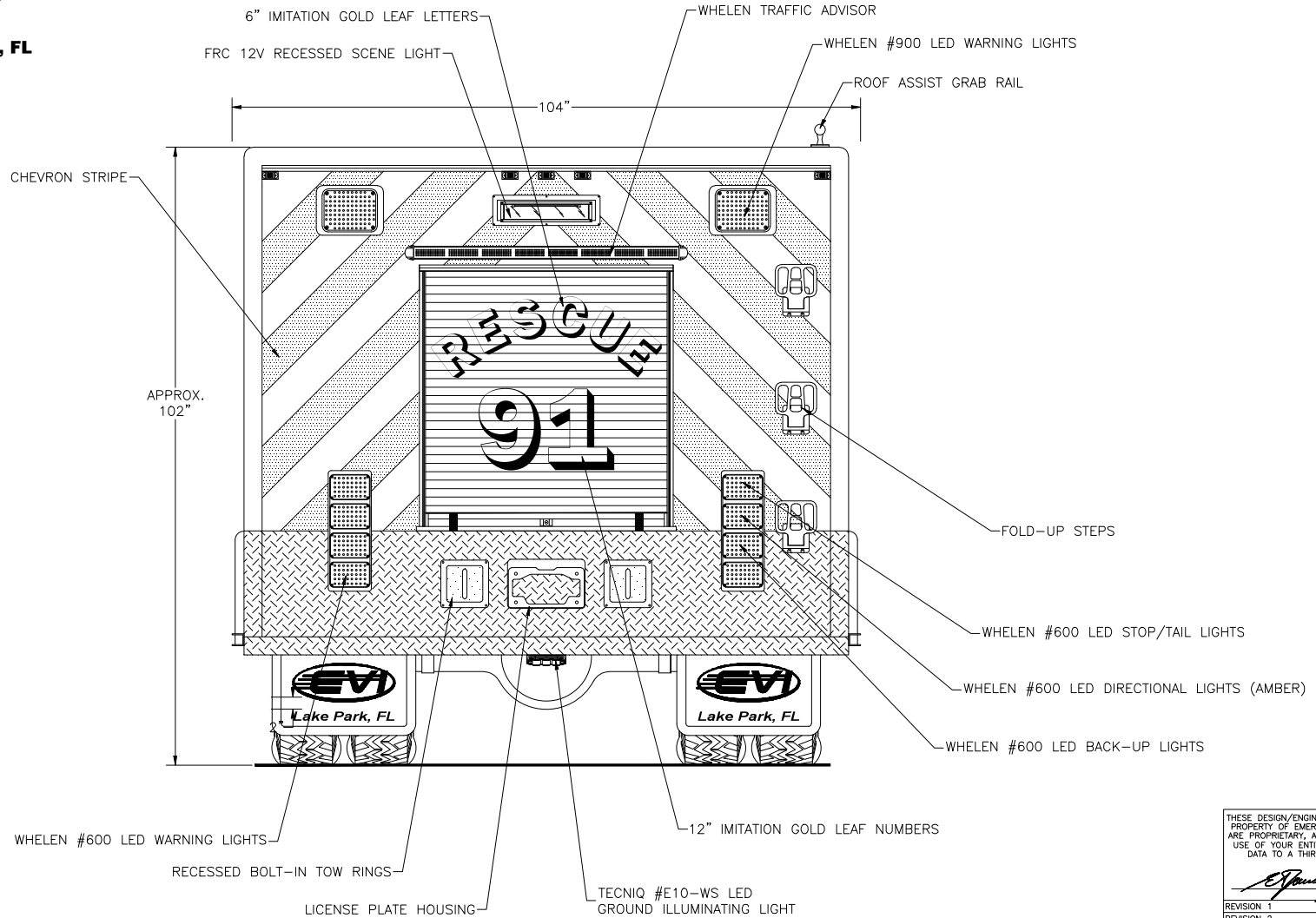
*E. J. ...* DATE: 12/05/14

REVISION 1	NS - 02/19/15
REVISION 2	ACS - 05/28/15
REVISION 3	-
REVISION 4	-
REVISION 5	-



**705 13TH STREET, LAKE PARK, FL  
800-848-6652**

*Fillmore Fire Rescue  
Fillmore, California*



*Rear View*

THESE DESIGN/ENGINEERING DRAWING(S) ARE THE PROPERTY OF EMERGENCY VEHICLES, INC. THEY ARE PROPRIETARY, AND ARE FOR THE EXCLUSIVE USE OF YOUR ENTITY. ANY DIVULGING OF THIS DATA TO A THIRD PARTY IS PROHIBITED.

*E. Vance* DATE: 12/05/14

REVISION 1	NS - 02/19/15
REVISION 2	ACS - 05/28/15
REVISION 3	-
REVISION 4	-
REVISION 5	-