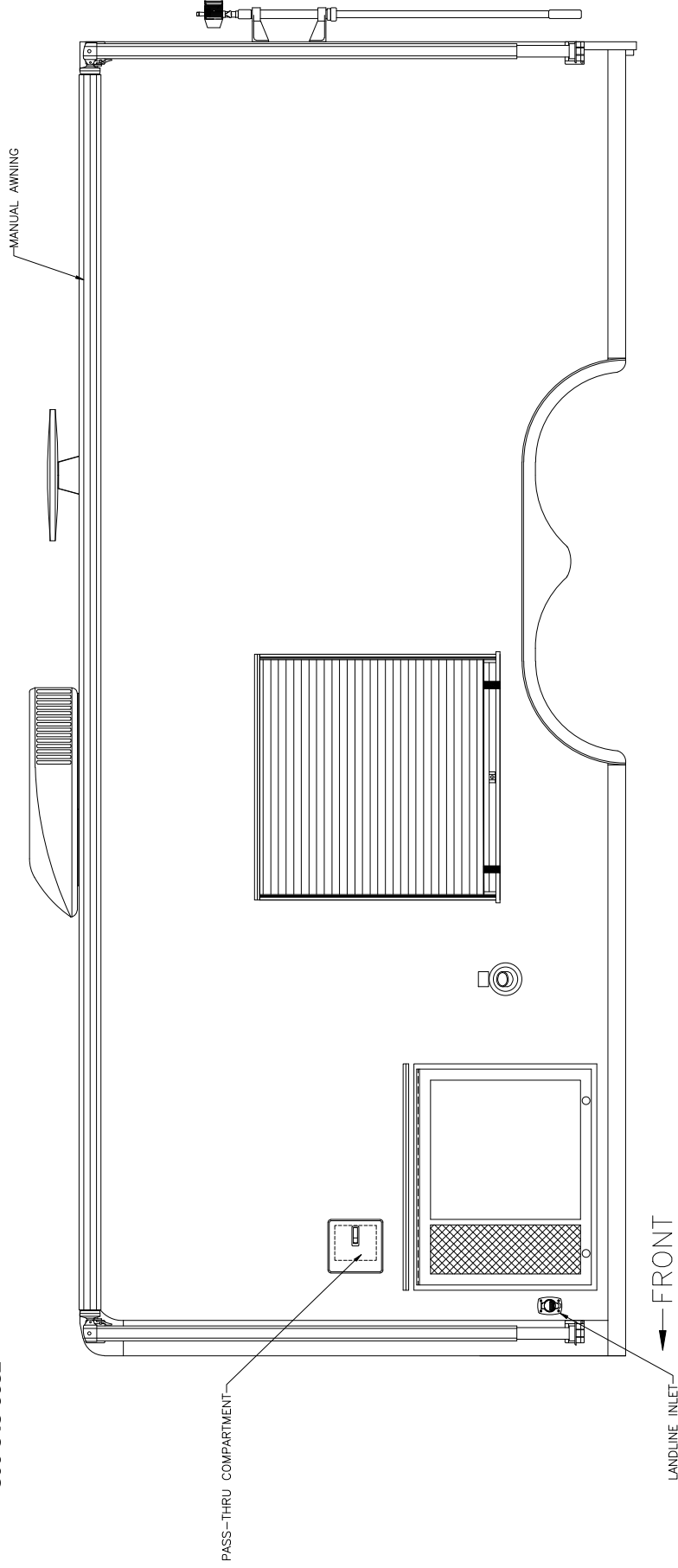


Clinton Police Department Clinton, Mississippi



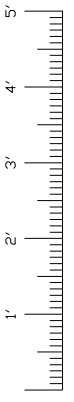
705 13TH STREET, LAKE PARK, FL
800-848-6652



THESE DRAWINGS/ENGINEERING DRAWINGS ARE THE PROPERTY OF EMERGENCY VEHICLES, INC. THEY ARE PROPRIETARY AND ARE FOR THE EXCLUSIVE USE OF THE CLIENT. REPRODUCTION OF THIS DATA TO A THIRD PARTY IS PROHIBITED.

E. Spence DATE: 3/27/15

REVISION 1	-
REVISION 2	-
REVISION 3	-
REVISION 4	-
REVISION 5	-



Streetside Overall

Clinton Police Department Clinton, Mississippi



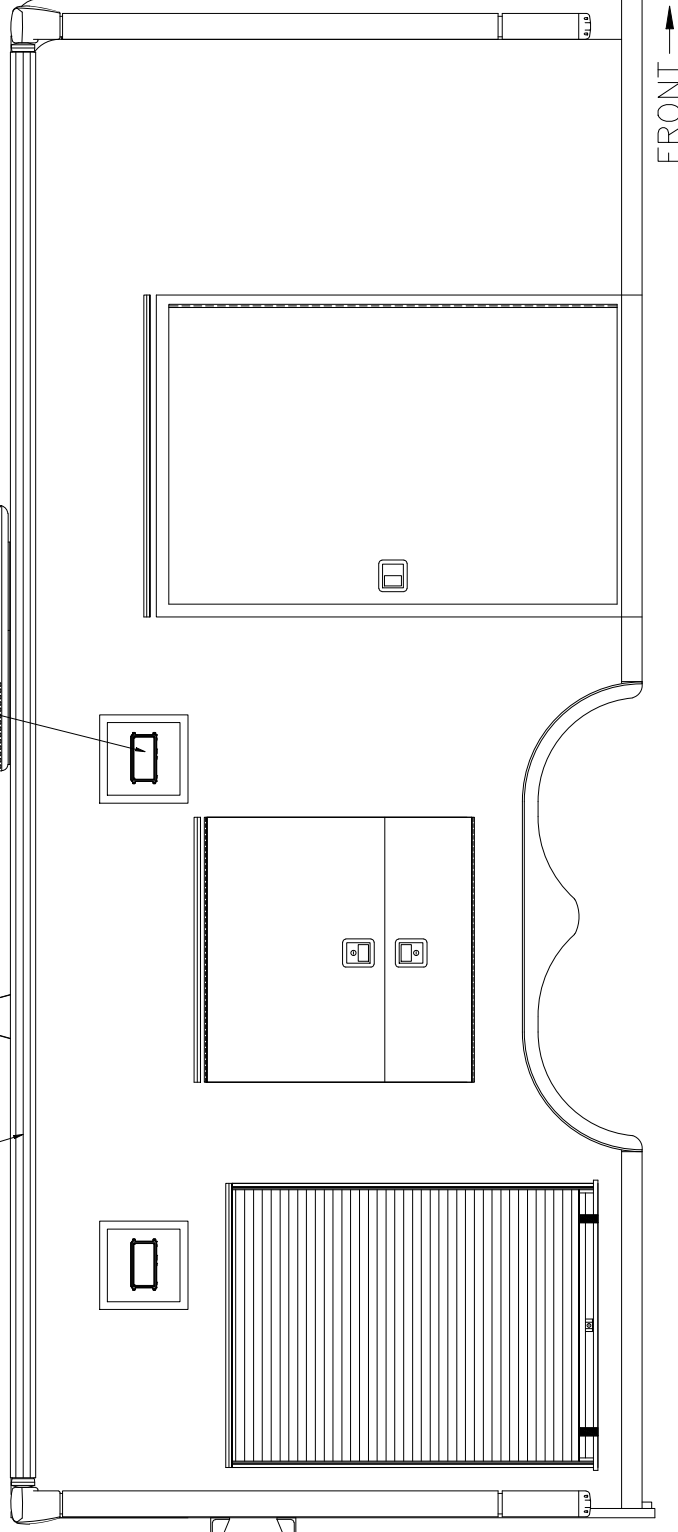
705 13TH STREET, LAKE PARK, FL
800-848-6652

WHELEN #PFP1AC LED FLOODLIGHTS
A/C UNIT (IN PLACE)

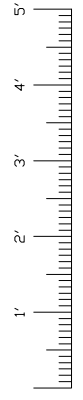
T.V. ANTENNA

ELECTRIC AWNING

ERC 750 WATT
TELESCOPIC SCENE LIGHTS



FRONT →



Curbside Overall

THESE DESIGN/ENGINEERING DRAWINGS ARE THE PROPERTY OF EMERGENCY VEHICLES, INC. THEY ARE PROPRIETARY AND ARE FOR THE EXCLUSIVE USE OF THE CLIENT. REUSE OR REPRODUCTION OF THIS DATA TO A THIRD PARTY IS PROHIBITED.

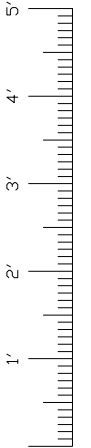
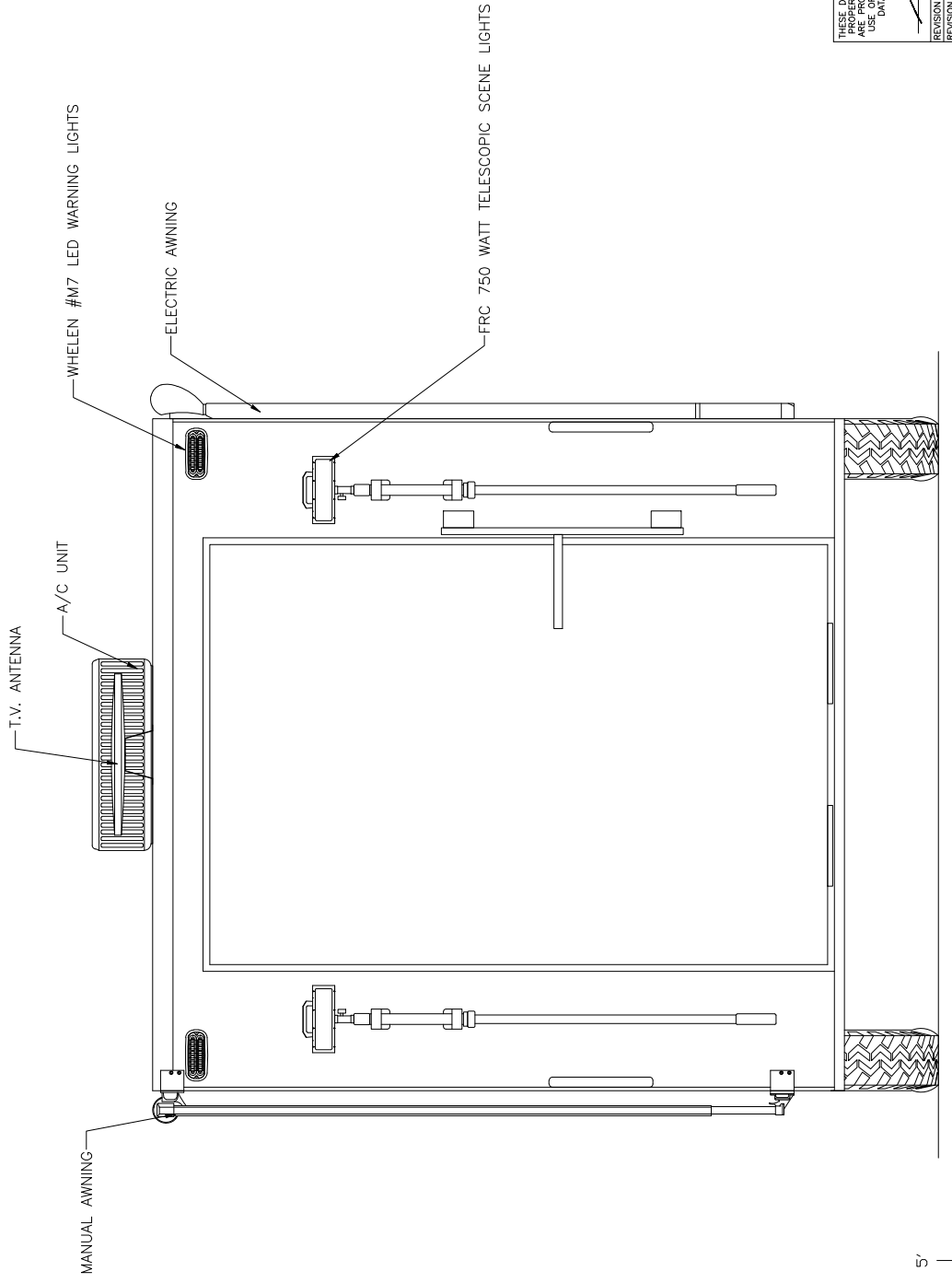
DATE: 03/27/15
[Signature]

REVISION	1	2	3	4	5
REVISION 1	-	-	-	-	-
REVISION 2	-	-	-	-	-
REVISION 3	-	-	-	-	-
REVISION 4	-	-	-	-	-
REVISION 5	-	-	-	-	-

Clinton Police Department Clinton, Mississippi



705 13TH STREET, LAKE PARK, FL
800-848-6652



Rear View

THESE DESIGN/ENGINEERING DRAWINGS ARE THE PROPERTY OF EMERGENCY WHEELS, INC. THEY ARE PROPRIETARY AND ARE FOR THE EXCLUSIVE USE OF THE PARTY IDENTIFIED HEREIN. THIS DATA TO A THIRD PARTY IS PROHIBITED.

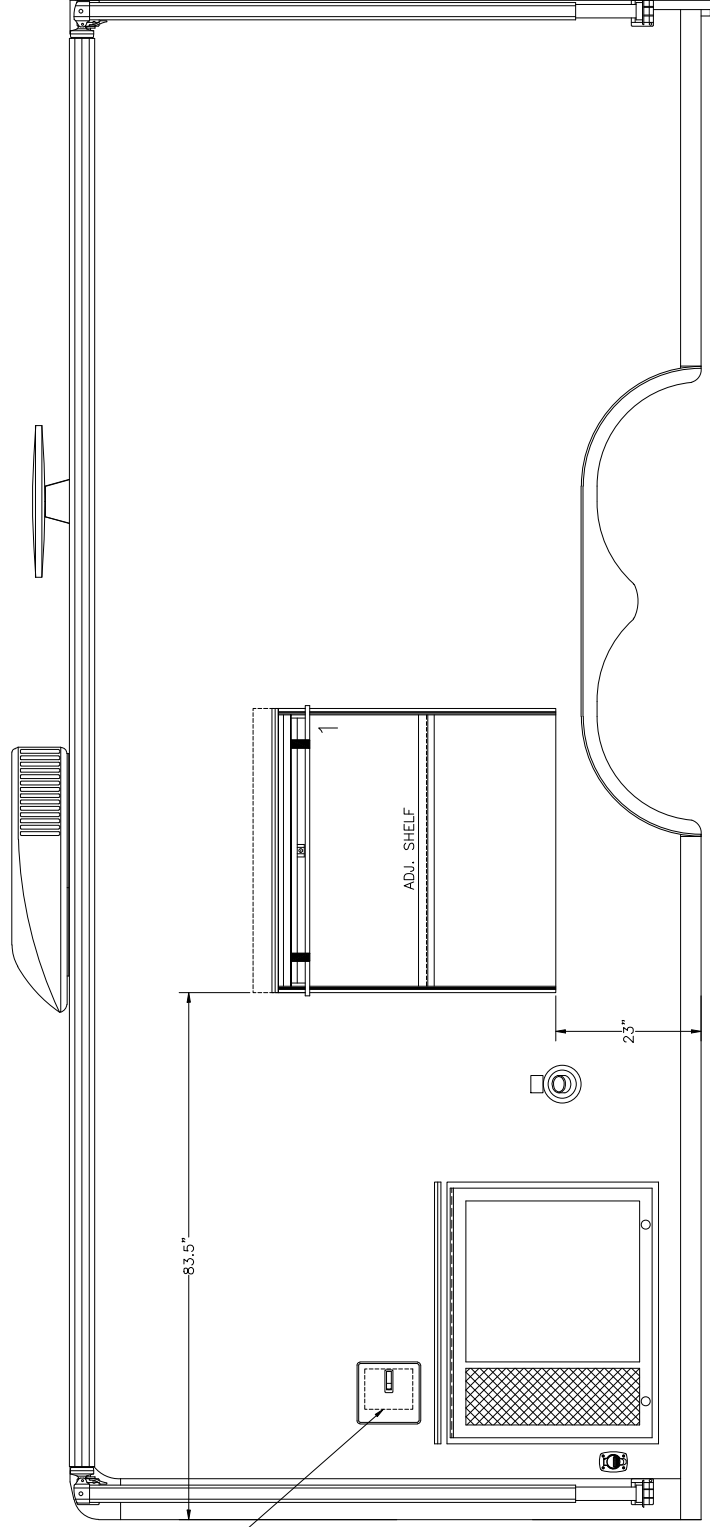
DATE: 03/27/15

REVISION 1	-
REVISION 2	-
REVISION 3	-
REVISION 4	-
REVISION 5	-

Clinton Police Department Clinton, Mississippi

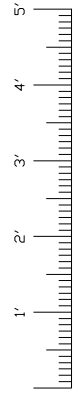


705 13TH STREET, LAKE PARK, FL
800-848-6652



COMPARTMENT LEGEND
COMPT. #1 - 45"W X 48"H X 26"D

← FRONT



THESE DESIGN/ENGINEERING DRAWINGS ARE THE PROPERTY OF EMERGENCY VEHICLES, INC. THEY ARE PROPRIETARY, AND ARE FOR THE EXCLUSIVE USE OF THE CLIENT. REPRODUCTION OF THIS DATA TO A THIRD PARTY IS PROHIBITED.

E. Spang DATE: 03/27/15

REVISION 1	-
REVISION 2	-
REVISION 3	-
REVISION 4	-
REVISION 5	-

Streetside Body