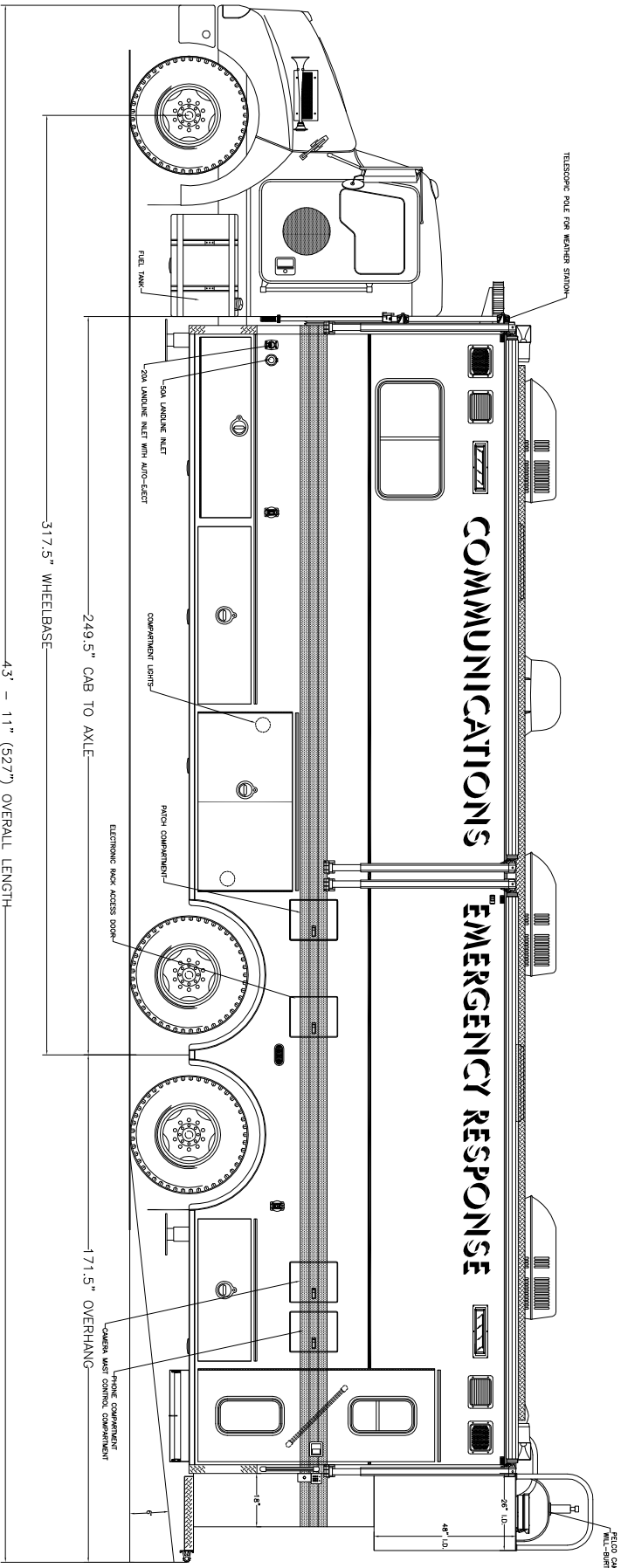


**EMERGENCY VEHICLES, INC.**

*City of Columbus  
Emergency Response Vehicle*



317.5" WHEELBASE  
249.5" CAB TO AXLE  
43' - 11" (527") OVERALL LENGTH  
171.5" OVERHANG



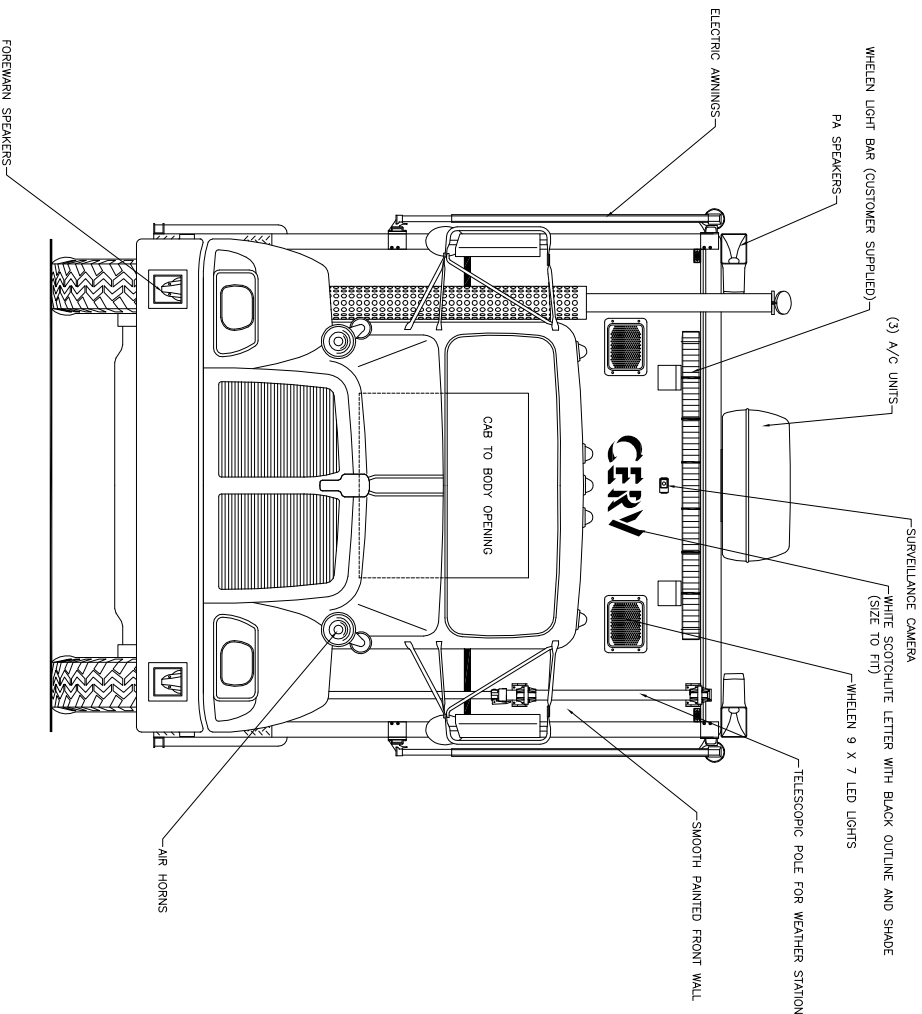
*Streetside Overall*

THESE DESIGN/ENGINEERING DRAWINGS ARE THE PROPERTY OF EMERGENCY VEHICLES, INC. THEY ARE PROPRIETARY AND ARE FOR THE EXCLUSIVE USE OF THE CITY OF COLUMBUS. ANY REUSE OF THIS DATA TO A THIRD PARTY IS PROHIBITED.

REVISION	DATE
REVISION 1	NS - 12/09/05
REVISION 2	NS - 01/10/06
REVISION 3	NS - 06/16/06
REVISION 4	NS - 10/18/06
REVISION 5	NS - 06/24/07



*City of Columbus  
Support Services Vehicle*

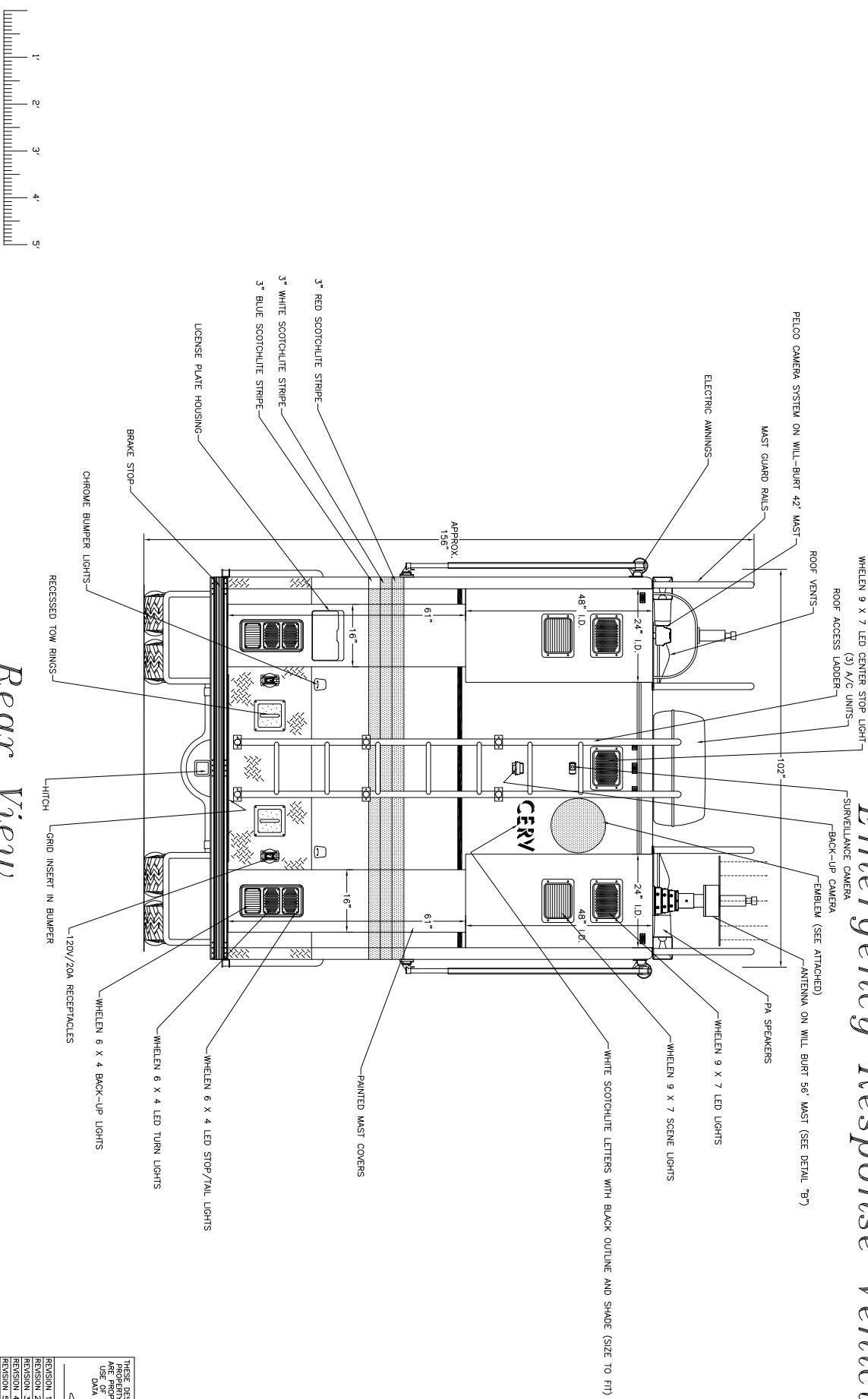


*Front View*

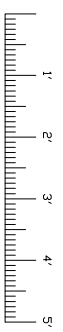
THESE DESIGN/ENGINEERING DRAWINGS ARE THE PROPERTY OF EMERGENCY VEHICLES, INC. THEY ARE PROPRIETARY AND ARE FOR THE EXCLUSIVE USE OF THE CITY OF COLUMBUS. REPRODUCTION OF THIS DATA TO A THIRD PARTY IS PROHIBITED.

REVISION	DATE
REVISION 1	NS - 12/09/05
REVISION 2	NS - 01/10/06
REVISION 3	NS - 06/16/06
REVISION 4	NS - 09/20/06
REVISION 5	NS - 09/24/07

## City of Columbus Emergency Response Vehicle



Rear View



THESE DESIGN/ENGINEERING DRAWINGS ARE THE PROPERTY OF EMERGENCY VEHICLES, INC. THEY ARE PROPRIETARY AND ARE FOR THE EXCLUSIVE USE OF THE CITY OF COLUMBUS. ANY REPRODUCTION OR USE BY A THIRD PARTY IS PROHIBITED.

REVISION	DATE
REVISION 1	NS - 12/09/05
REVISION 2	NS - 01/10/06
REVISION 3	NS - 06/16/06
REVISION 4	NS - 10/18/06
REVISION 5	NS - 06/24/07