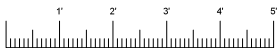
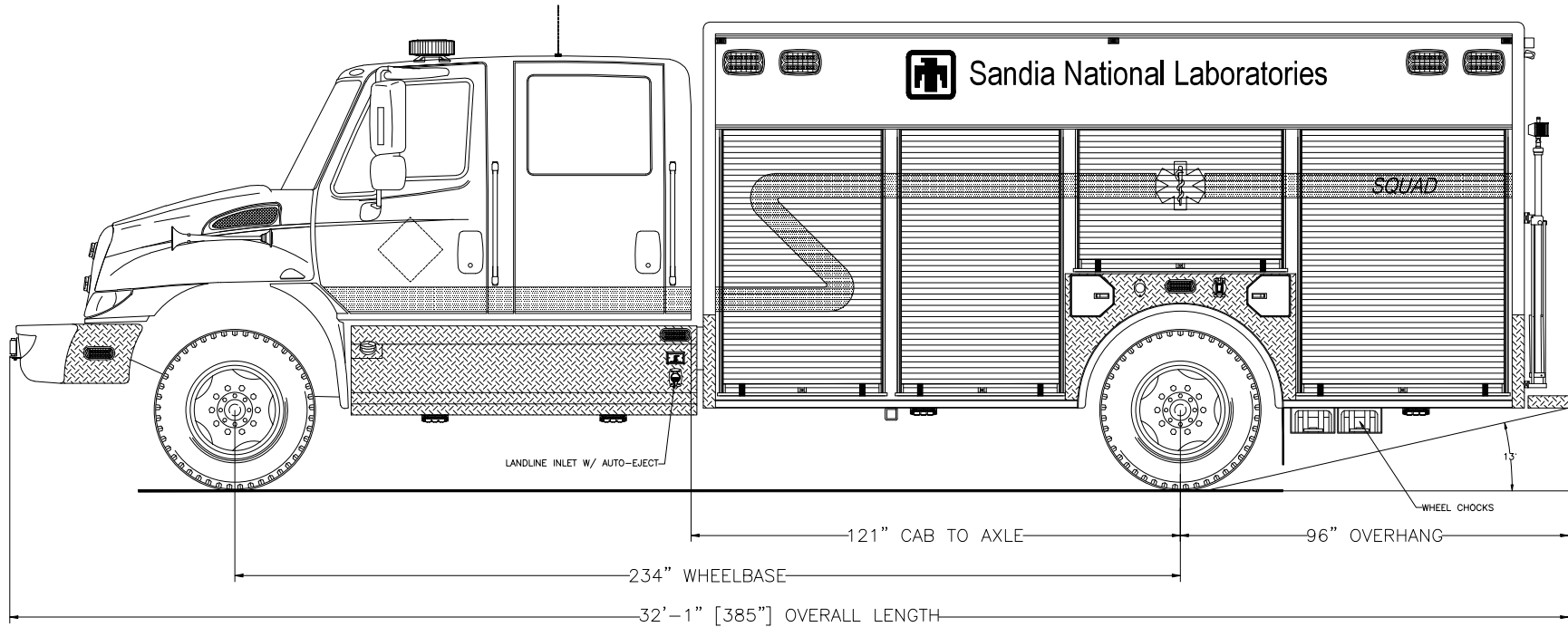




705 13TH STREET, LAKE PARK, FL
800-848-6652

*Sandia National Labs
Albuquerque, New Mexico*



Streetside Overall

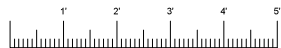
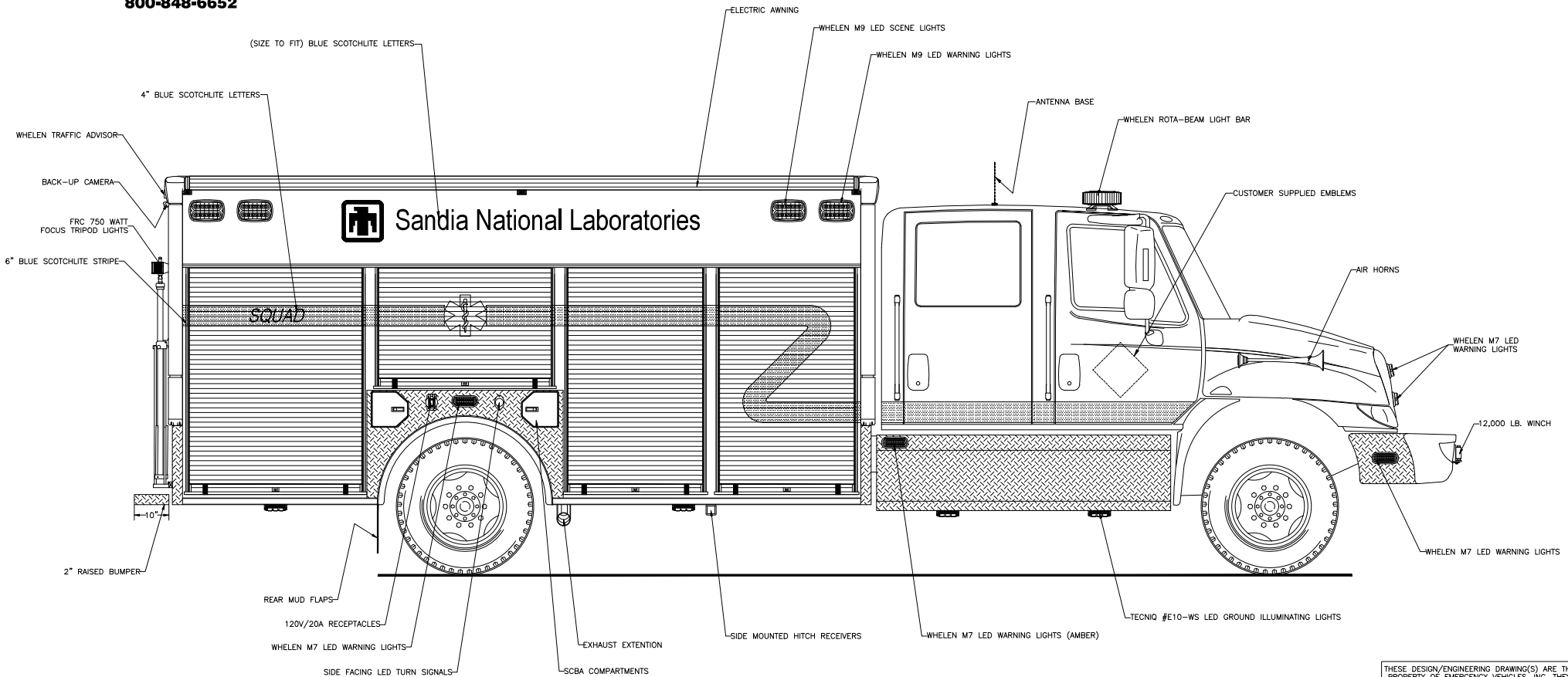
THESE DESIGN/ENGINEERING DRAWING(S) ARE THE PROPERTY OF EMERGENCY VEHICLES, INC. THEY ARE PROPRIETARY AND ARE FOR THE EXCLUSIVE USE OF YOUR ENTITY. ANY DIVULGING OF THIS DATA TO A THIRD PARTY IS PROHIBITED.

		DATE: 12/03/14
REVISION 1	ACS	05/07/15
REVISION 2	NS	05/13/15
REVISION 3	-	-
REVISION 4	-	-
REVISION 5	-	-



705 13TH STREET, LAKE PARK, FL
800-848-6652

Sandia National Labs Albuquerque, New Mexico



Curbside Overall

THESE DESIGN/ENGINEERING DRAWING(S) ARE THE PROPERTY OF EMERGENCY VEHICLES, INC. THEY ARE PROPRIETARY AND ARE FOR THE EXCLUSIVE USE OF YOUR ENTITY. ANY DIVULGING OF THIS DATA TO A THIRD PARTY IS PROHIBITED.

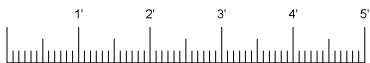
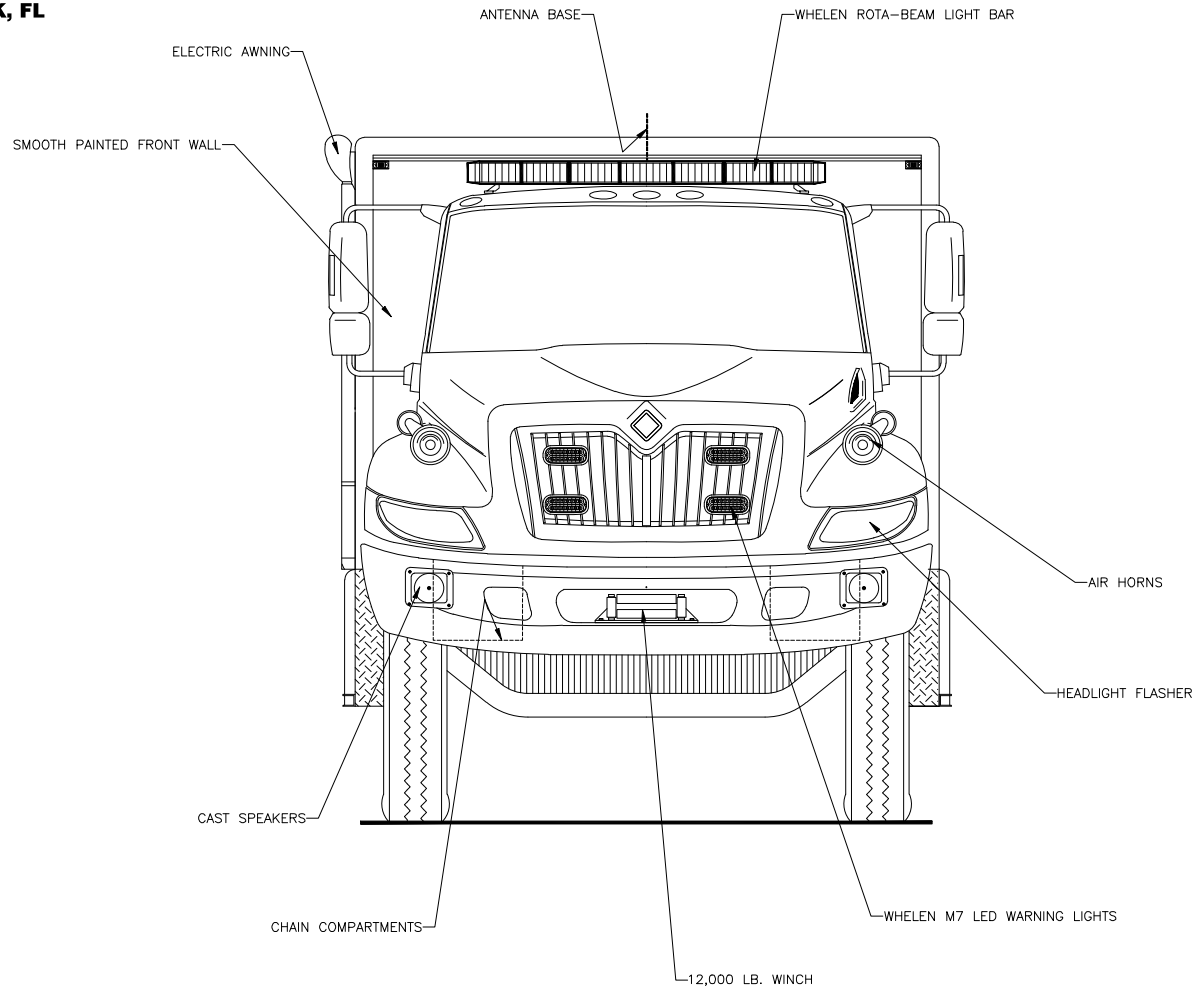
REVISION 1	ACS - 05/07/15
REVISION 2	NS - 05/13/15
REVISION 3	-
REVISION 4	-
REVISION 5	-

DATE: 12/03/14



705 13TH STREET, LAKE PARK, FL
800-848-6652

*Sandia National Labs
Albuquerque, New Mexico*



Front View

THESE DESIGN/ENGINEERING DRAWING(S) ARE THE PROPERTY OF EMERGENCY VEHICLES, INC. THEY ARE PROPRIETARY AND ARE FOR THE EXCLUSIVE USE OF YOUR ENTITY. ANY DIVULGING OF THIS DATA TO A THIRD PARTY IS PROHIBITED.

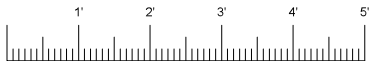
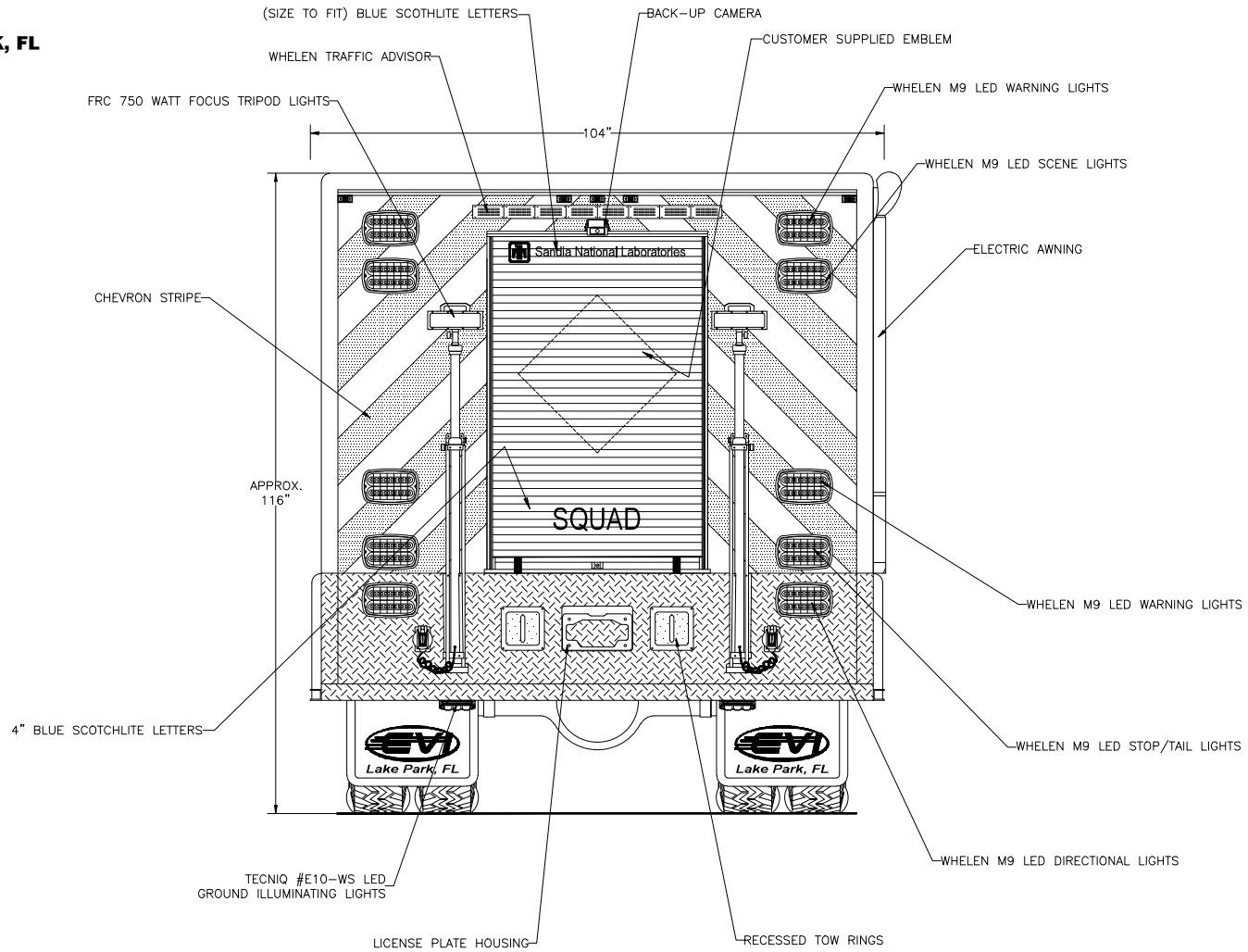
E. J. [Signature] DATE: 12/03/14

REVISION 1	ACS - 05/07/15
REVISION 2	NS - 05/13/15
REVISION 3	NS - 06/01/15
REVISION 4	-
REVISION 5	-



705 13TH STREET, LAKE PARK, FL
800-848-6652

Sandia National Labs Albuquerque, New Mexico



Rear View

THESE DESIGN/ENGINEERING DRAWING(S) ARE THE PROPERTY OF EMERGENCY VEHICLES, INC. THEY ARE PROPRIETARY AND ARE FOR THE EXCLUSIVE USE OF YOUR ENTITY. ANY DIVULGING OF THIS DATA TO A THIRD PARTY IS PROHIBITED.

E. J. [Signature] DATE: 12/03/14

REVISION 1	ACS	05/07/15
REVISION 2	NS	05/13/15
REVISION 3	-	-
REVISION 4	-	-
REVISION 5	-	-