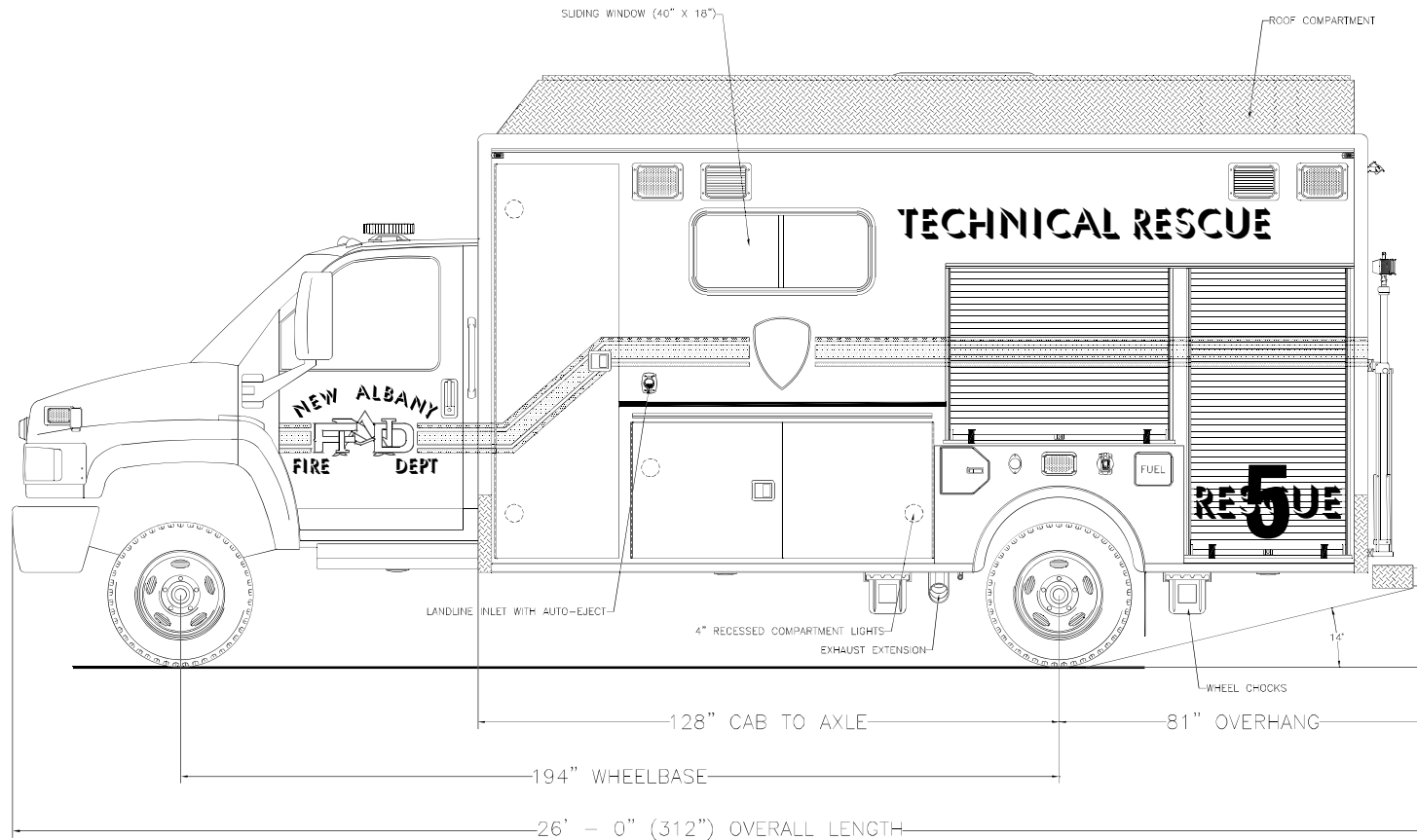


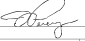
*EMERGENCY VEHICLES, INC.*

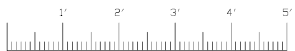
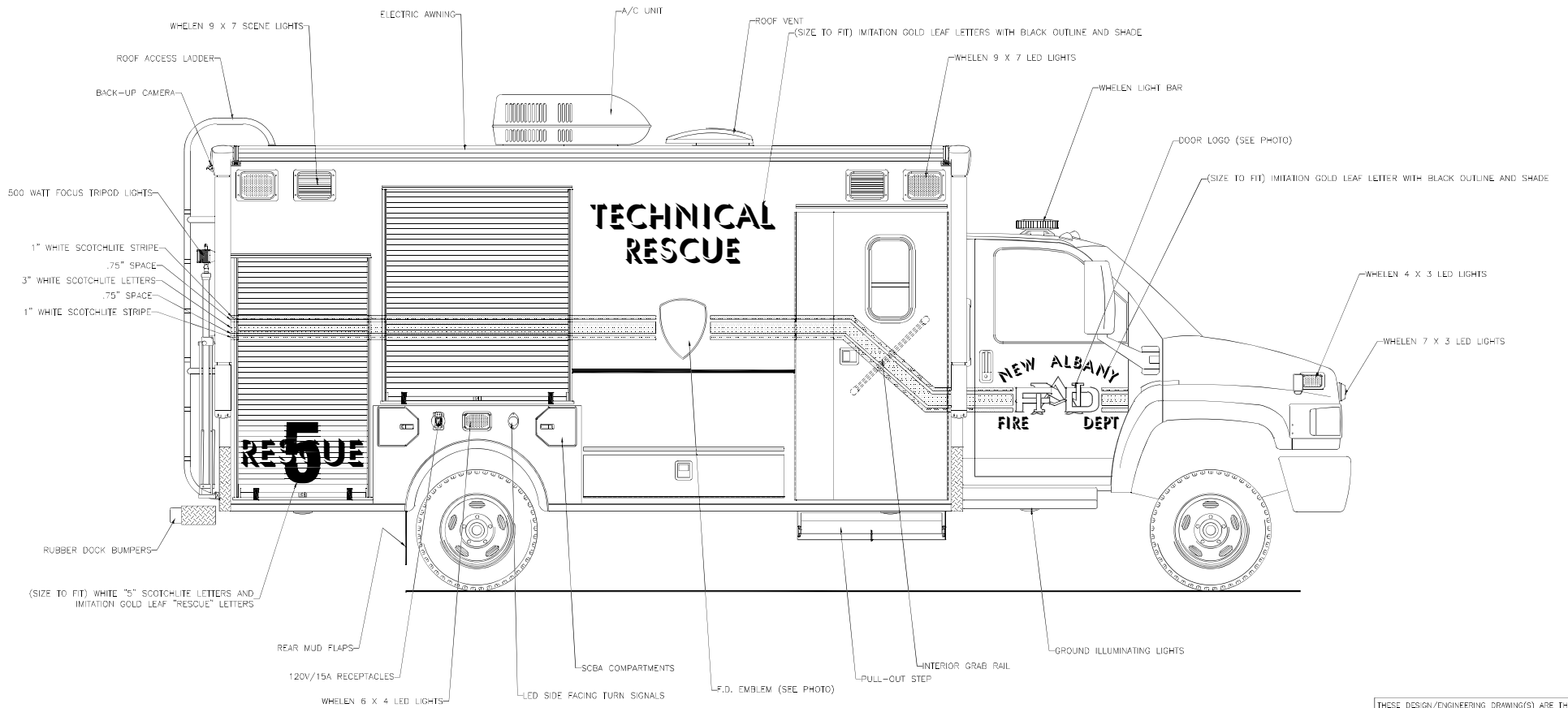
*New Albany Fire Department  
New Albany, Indiana*



*Streetside Overall*

THESE DESIGN/ENGINEERING DRAWING(S) ARE THE PROPERTY OF EMERGENCY VEHICLES, INC. THEY ARE PROPRIETARY, AND ARE FOR THE EXCLUSIVE USE OF YOUR ENTITY. ANY DIVULGING OF THIS DATA TO A THIRD PARTY IS PROHIBITED.

|   |               |                |
|---|---------------|----------------|
|  |               | DATE: 08/24/09 |
| REVISION 1  | NS - 09/03/09 |                |
| REVISION 2  | NS - 09/11/09 |                |
| REVISION 3  | NS - 02/25/10 |                |
| REVISION 4  | -             |                |
| REVISION 5  | -             |                |



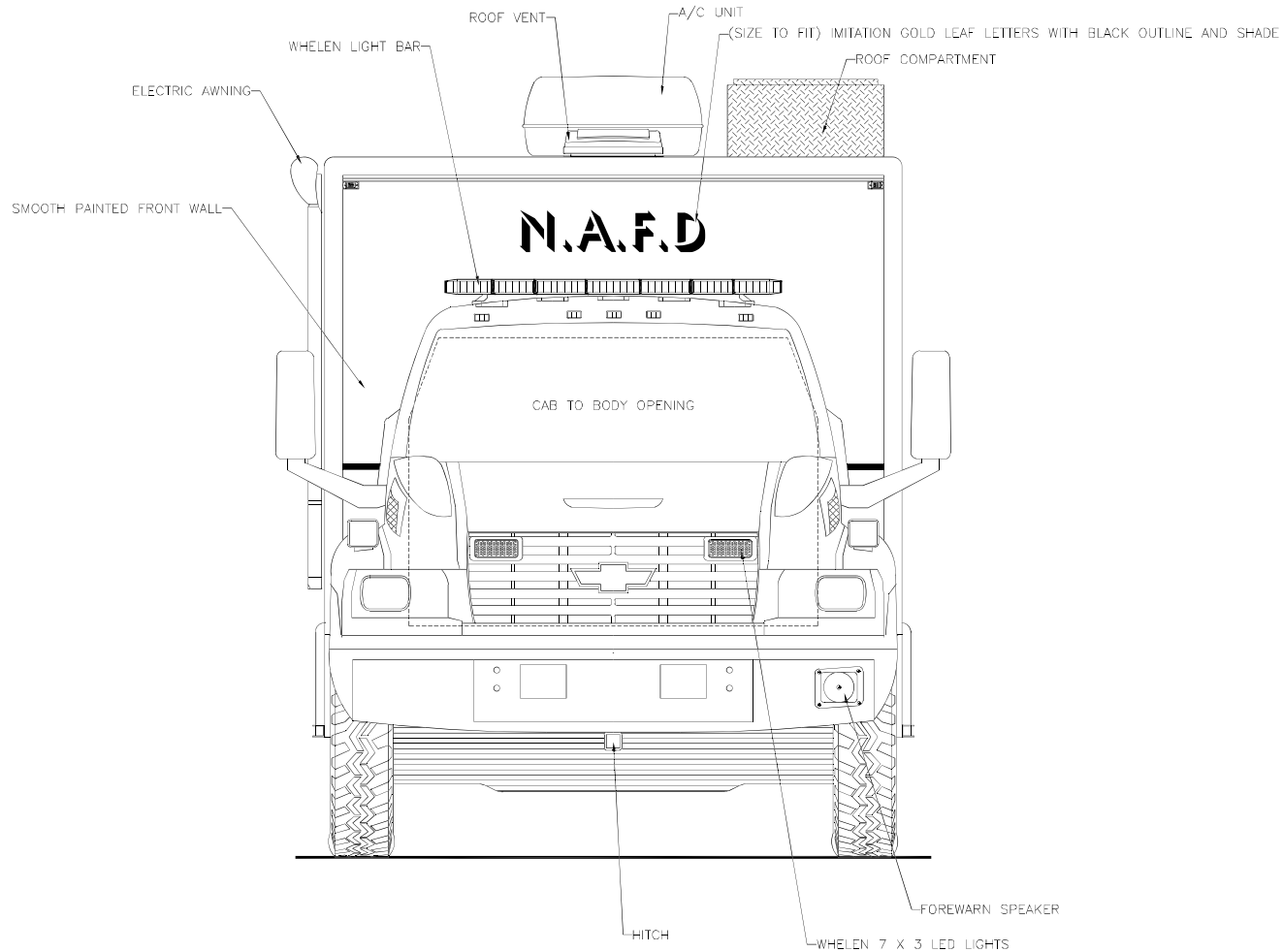
*Curbside Overall*

THESE DESIGN/ENGINEERING DRAWING(S) ARE THE PROPERTY OF EMERGENCY VEHICLES, INC. THEY ARE PROPRIETARY, AND ARE FOR THE EXCLUSIVE USE OF YOUR ENTITY. ANY DIVULGING OF THIS DATA TO A THIRD PARTY IS PROHIBITED.

|                    |    |                |
|--------------------|----|----------------|
| <i>[Signature]</i> |    | DATE: 08/24/09 |
| REVISION 1         | NS | 09/03/09       |
| REVISION 2         | NS | 09/11/09       |
| REVISION 3         | NS | 02/25/10       |
| REVISION 4         | -  | -              |
| REVISION 5         | -  | -              |

**EMERGENCY VEHICLES, INC.**

*New Albany Fire Department  
New Albany, Indiana*



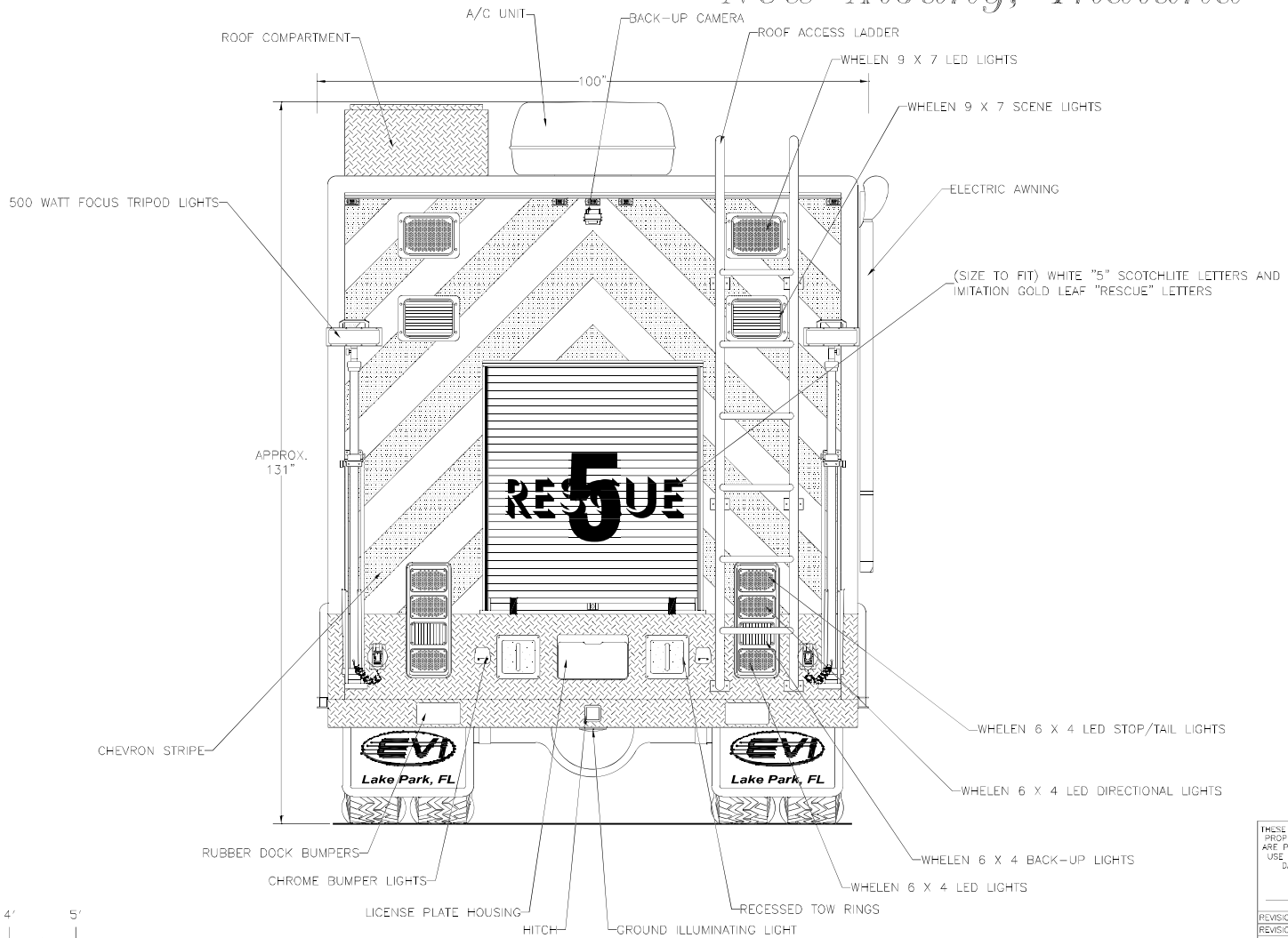
*Front View*



THESE DESIGN/ENGINEERING DRAWING(S) ARE THE PROPERTY OF EMERGENCY VEHICLES, INC. THEY ARE PROPRIETARY, AND ARE FOR THE EXCLUSIVE USE OF YOUR ENTITY. ANY DIVULGING OF THIS DATA TO A THIRD PARTY IS PROHIBITED.

*[Signature]* DATE: 08/24/09

|            |               |
|------------|---------------|
| REVISION 1 | NS - 09/03/09 |
| REVISION 2 | NS - 09/11/09 |
| REVISION 3 | NS - 02/25/10 |
| REVISION 4 | -             |
| REVISION 5 | -             |



*Rear View*



THESE DESIGN/ENGINEERING DRAWING(S) ARE THE PROPERTY OF EMERGENCY VEHICLES, INC. THEY ARE PROPRIETARY, AND ARE FOR THE EXCLUSIVE USE OF YOUR ENTITY. ANY DIVULGING OF THIS DATA TO A THIRD PARTY IS PROHIBITED.

|            |    |                |
|------------|----|----------------|
|            |    | DATE: 08/24/09 |
| REVISION 1 | NS | 09/03/09       |
| REVISION 2 | NS | 09/11/09       |
| REVISION 3 | NS | 02/25/10       |
| REVISION 4 | -  | -              |
| REVISION 5 | -  | -              |