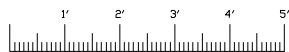
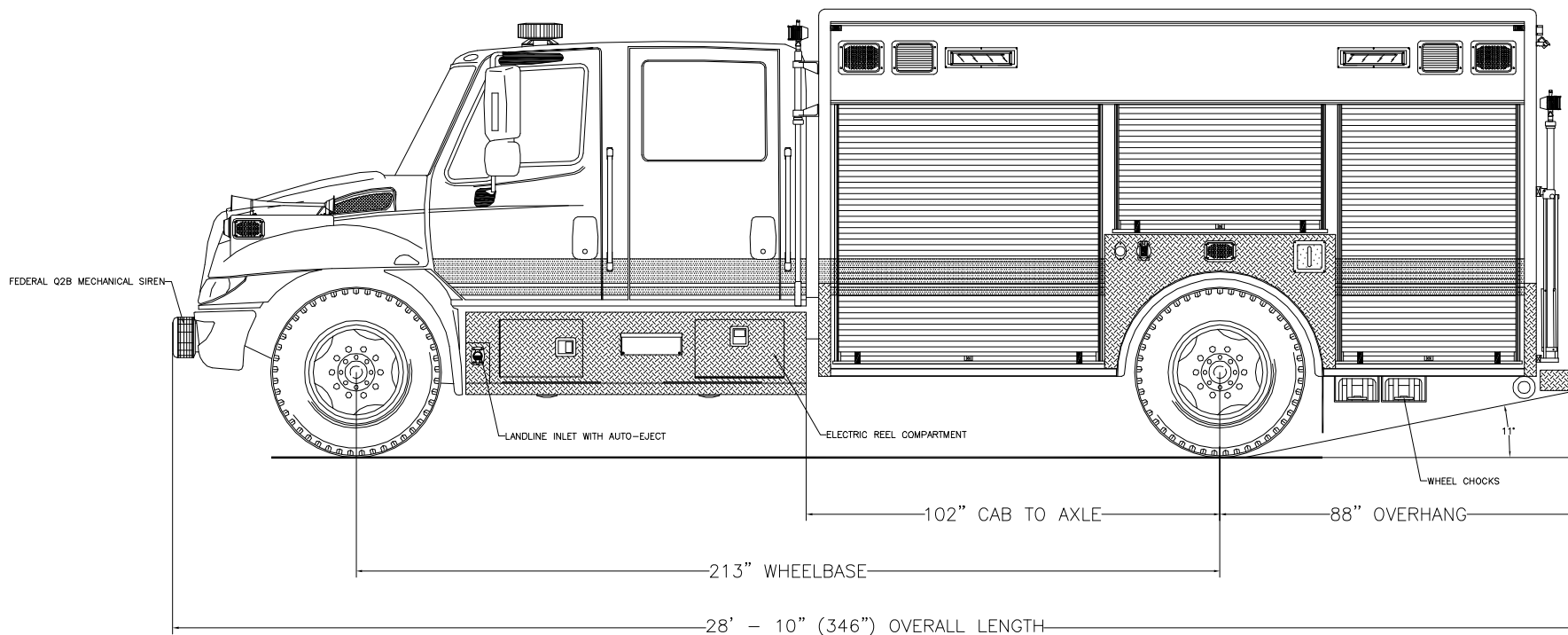


EMERGENCY VEHICLES, INC.

*Cetronia Fire Department
Allentown, Pennsylvania*

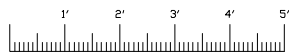
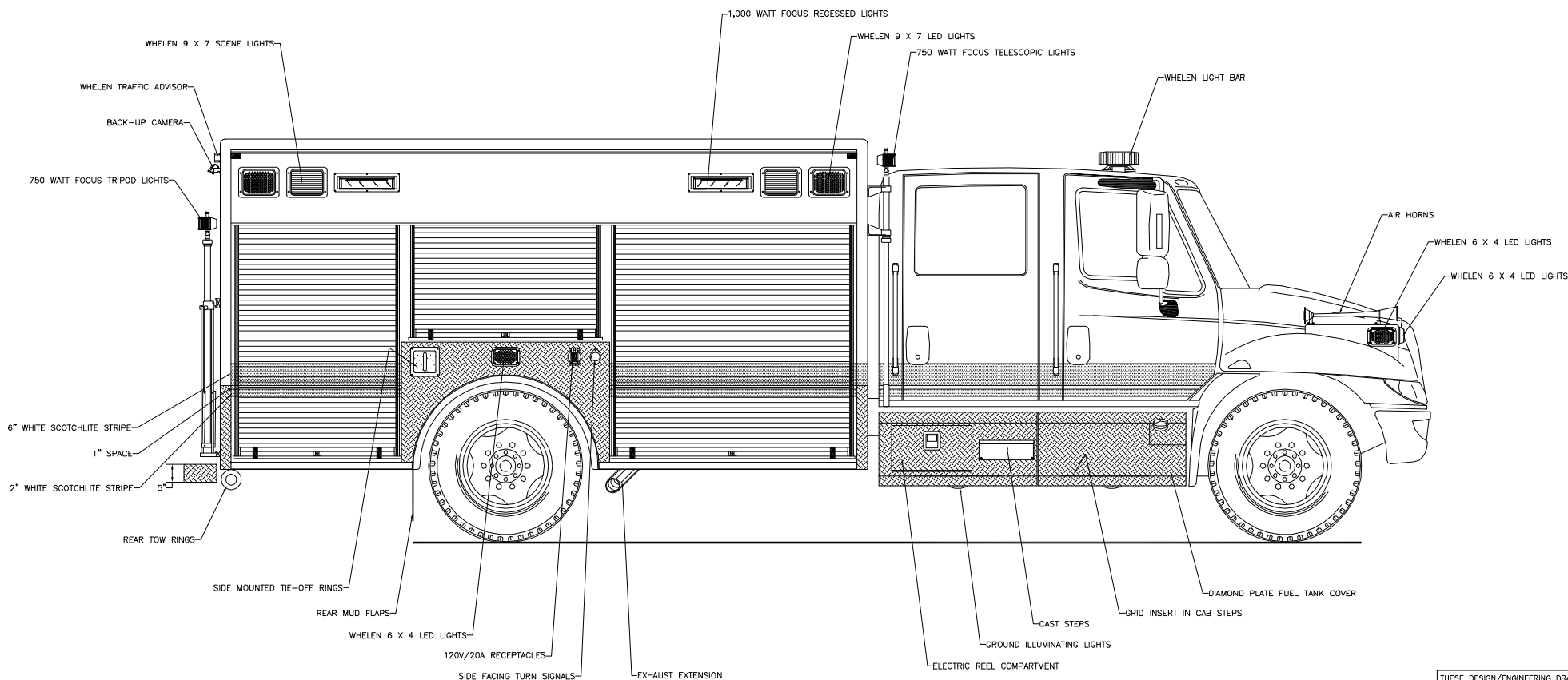


Streetside Overall

THESE DESIGN/ENGINEERING DRAWING(S) ARE THE PROPERTY OF EMERGENCY VEHICLES, INC. THEY ARE PROPRIETARY, AND ARE FOR THE EXCLUSIVE USE OF YOUR ENTITY. ANY DIVULGING OF THIS DATA TO A THIRD PARTY IS PROHIBITED.

[Signature] DATE: 03/20/08

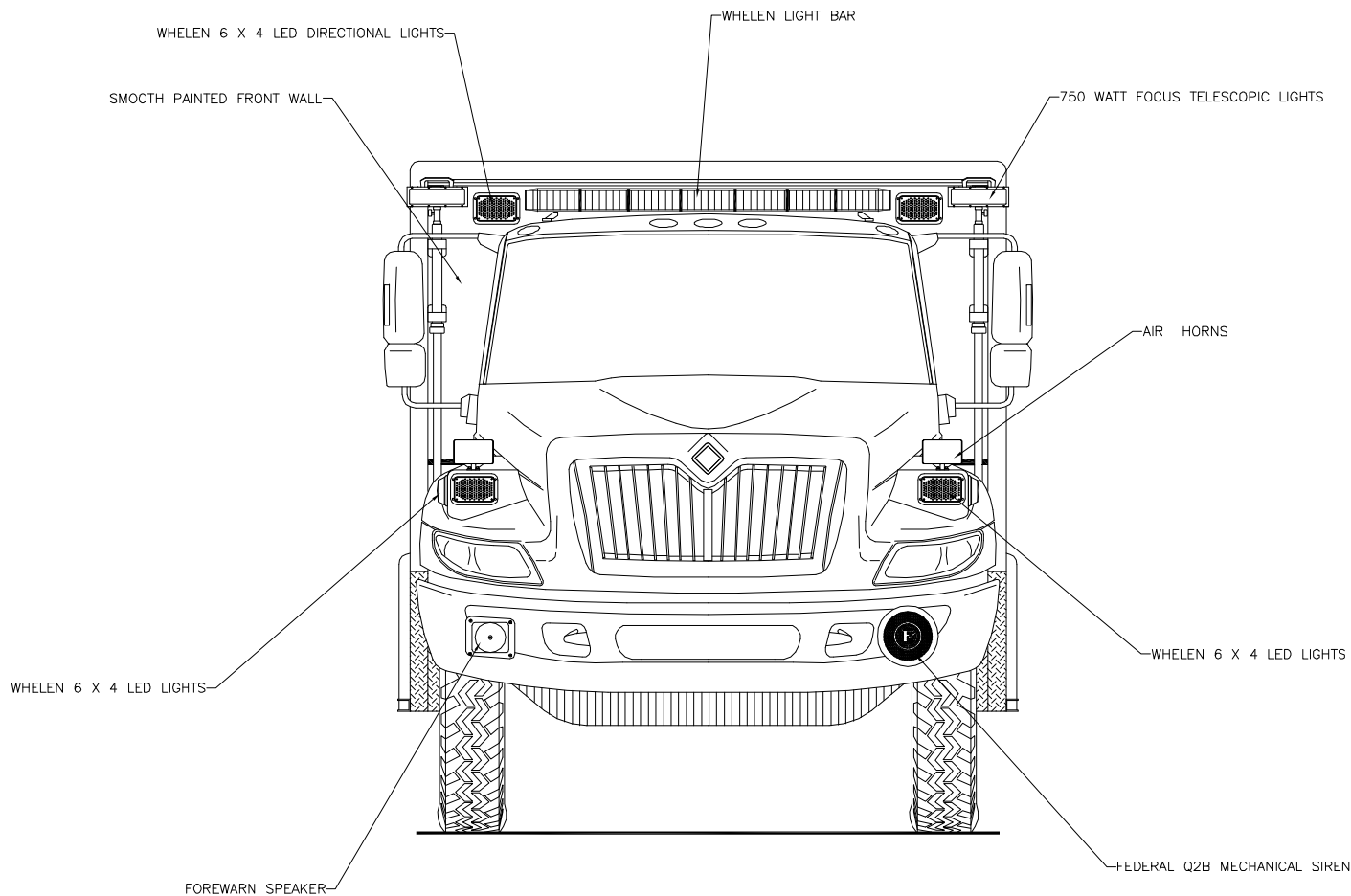
REVISION 1	NS - 03/27/08
REVISION 2	NS - 05/05/08
REVISION 3	NS - 06/05/08
REVISION 4	-
REVISION 5	-



Curbside Overall

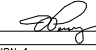
THESE DESIGN/ENGINEERING DRAWING(S) ARE THE PROPERTY OF EMERGENCY VEHICLES, INC. THEY ARE PROPRIETARY, AND ARE FOR THE EXCLUSIVE USE OF YOUR ENTITY. ANY DIVULGING OF THIS DATA TO A THIRD PARTY IS PROHIBITED.

		DATE: 03/20/08
REVISION 1	NS	- 03/27/08
REVISION 2	NS	- 05/05/08
REVISION 3	NS	- 06/05/08
REVISION 4	-	-
REVISION 5	-	-

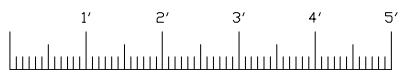
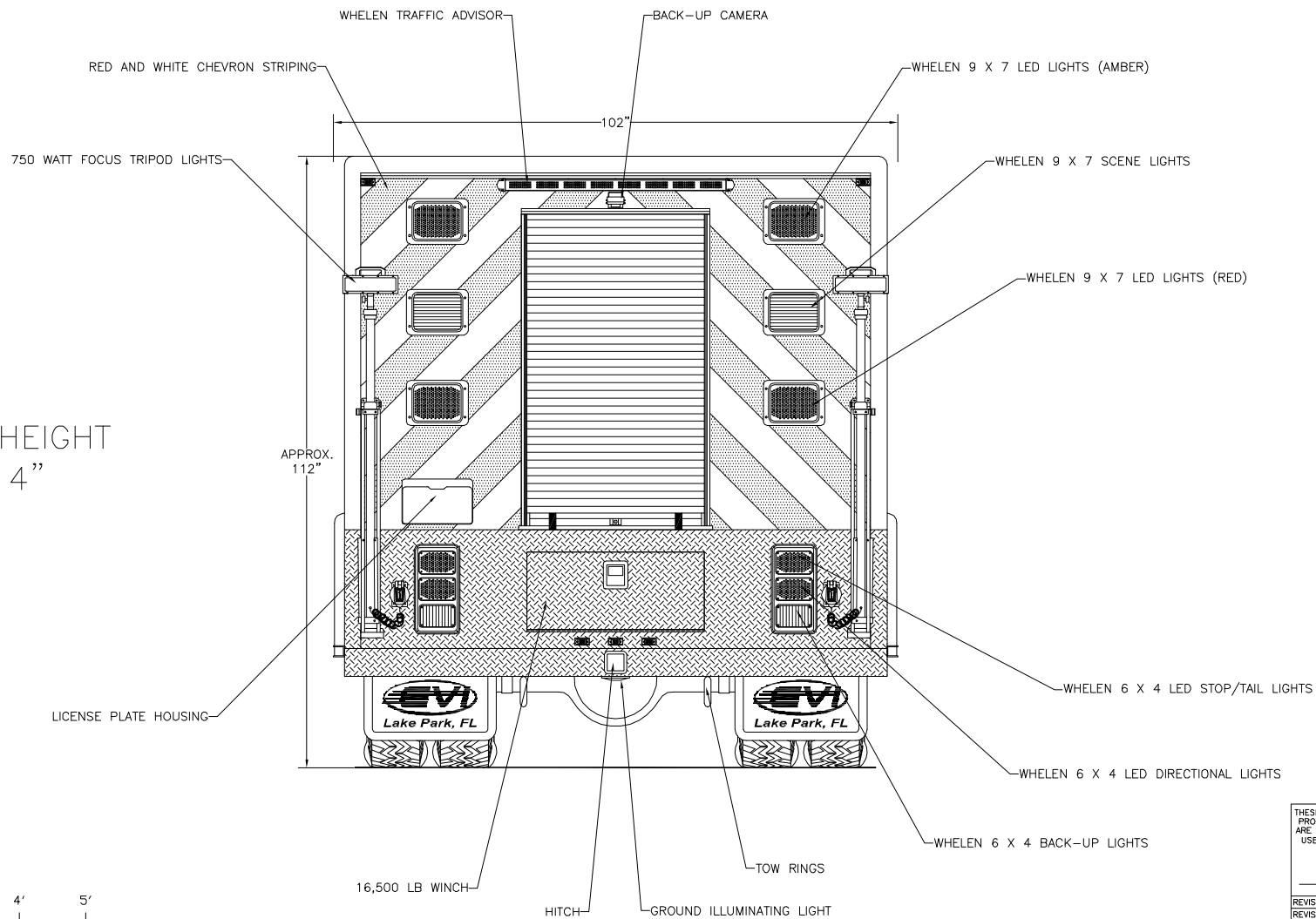


Front View

THESE DESIGN/ENGINEERING DRAWING(S) ARE THE PROPERTY OF EMERGENCY VEHICLES, INC. THEY ARE PROPRIETARY, AND ARE FOR THE EXCLUSIVE USE OF YOUR ENTITY. ANY DIVULGING OF THIS DATA TO A THIRD PARTY IS PROHIBITED.

		DATE: 03/20/08
REVISION 1	NS	- 03/27/08
REVISION 2	NS	- 05/05/08
REVISION 3	NS	- 06/05/08
REVISION 4	-	-
REVISION 5	-	-

MAX. HEIGHT
114"



Rear View

THESE DESIGN/ENGINEERING DRAWING(S) ARE THE PROPERTY OF EMERGENCY VEHICLES, INC. THEY ARE PROPRIETARY, AND ARE FOR THE EXCLUSIVE USE OF YOUR ENTITY. ANY DIVULGING OF THIS DATA TO A THIRD PARTY IS PROHIBITED.

DATE: 03/20/08

REVISION 1	NS - 03/27/08
REVISION 2	NS - 05/05/08
REVISION 3	NS - 06/05/08
REVISION 4	-
REVISION 5	-