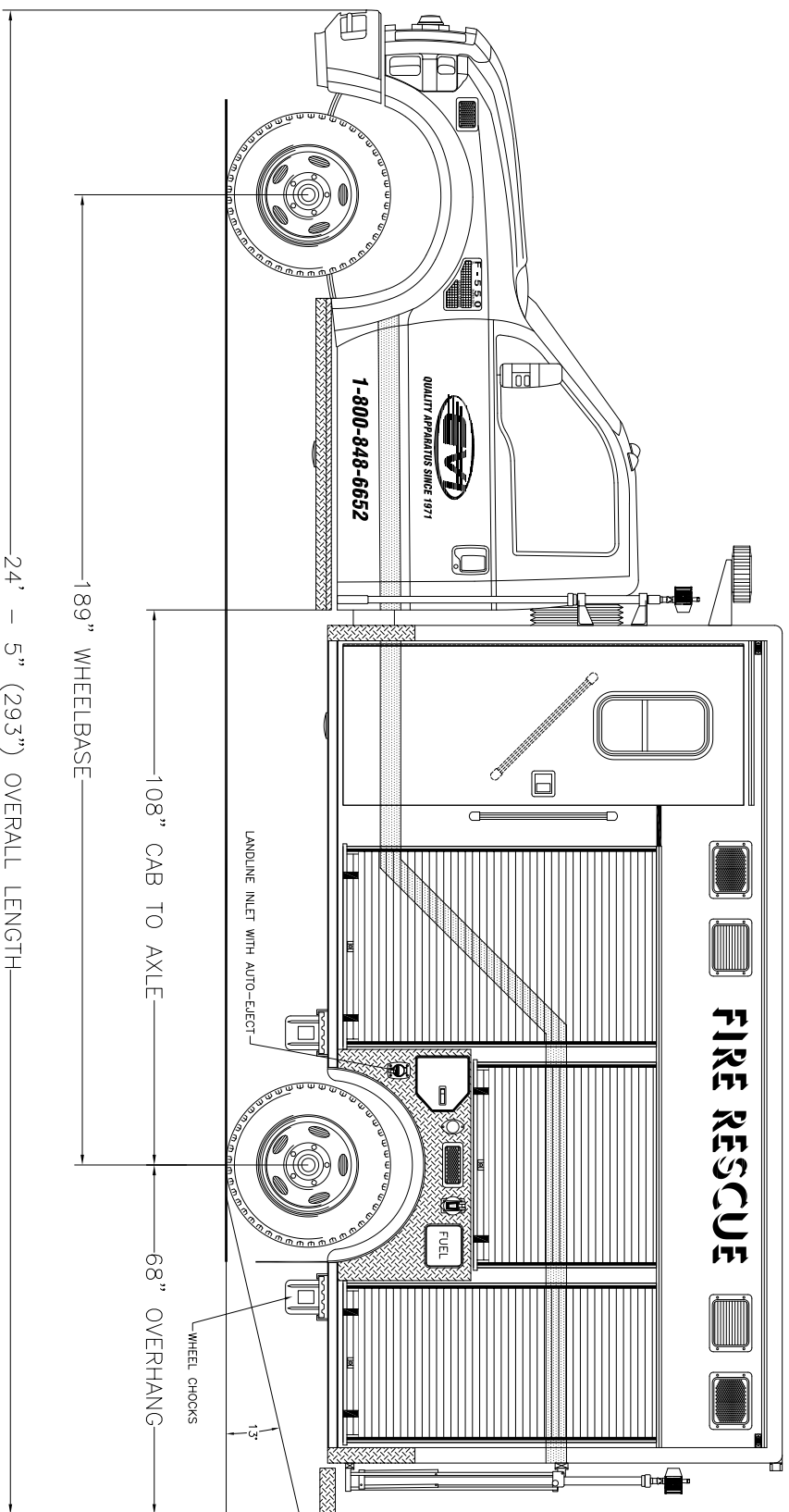


EMERGENCY VEHICLES, INC.

*2008 EMI 14' Crew Demo
Lake Park, Florida*

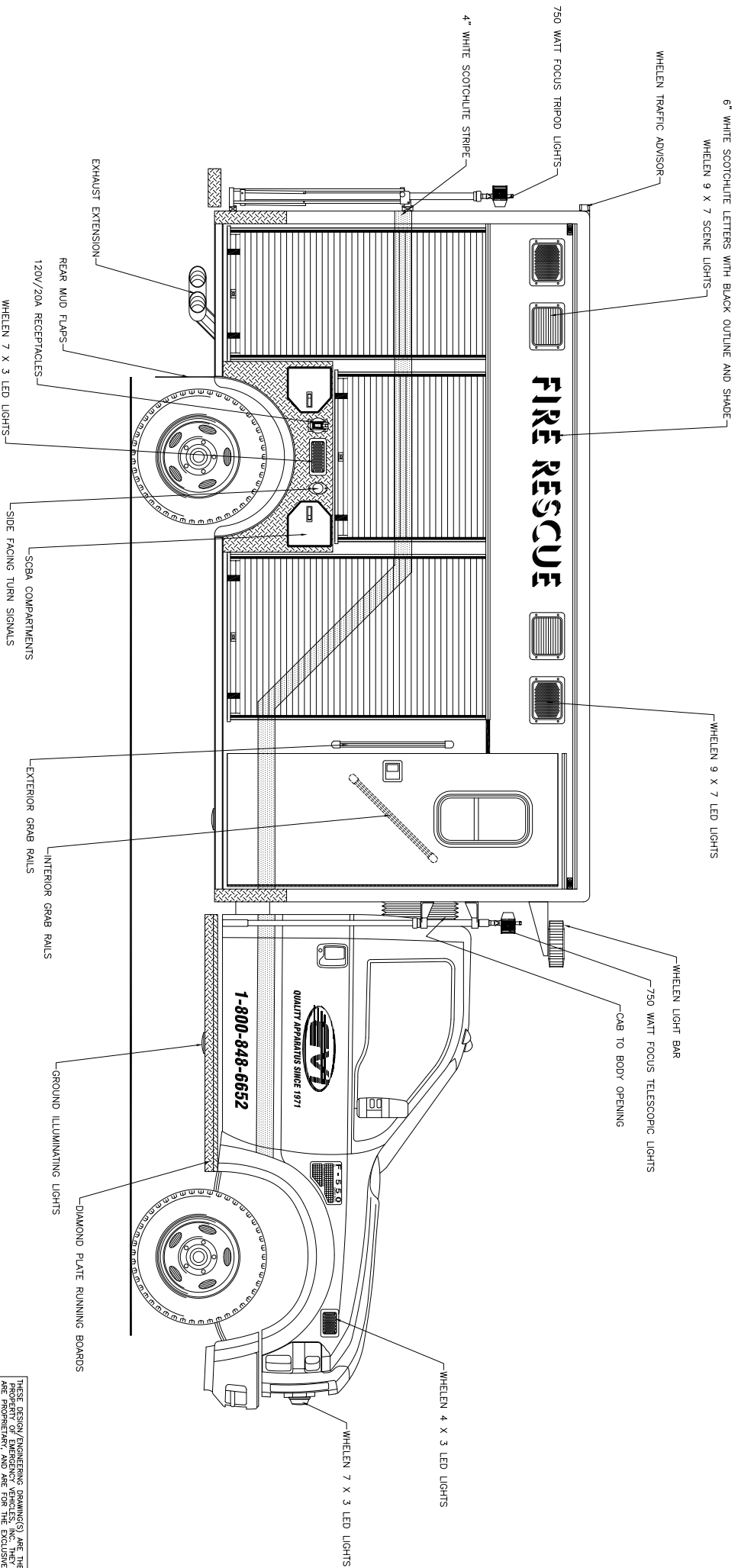


Streetside Overall

THESE DESIGN/ENGINEERING DRAWINGS ARE THE PROPERTY OF EMERGENCY VEHICLES, INC. THEY ARE PROPRIETARY AND ARE FOR THE EXCLUSIVE USE OF THE CLIENT. REPRODUCTION OR DISTRIBUTION TO A THIRD PARTY IS PROHIBITED.

REVISION 1	-	DATE: 10/29/07
REVISION 2	-	
REVISION 3	-	
REVISION 4	-	
REVISION 5	-	

2008 EMI 14' Crew Demo Lake Park, Florida



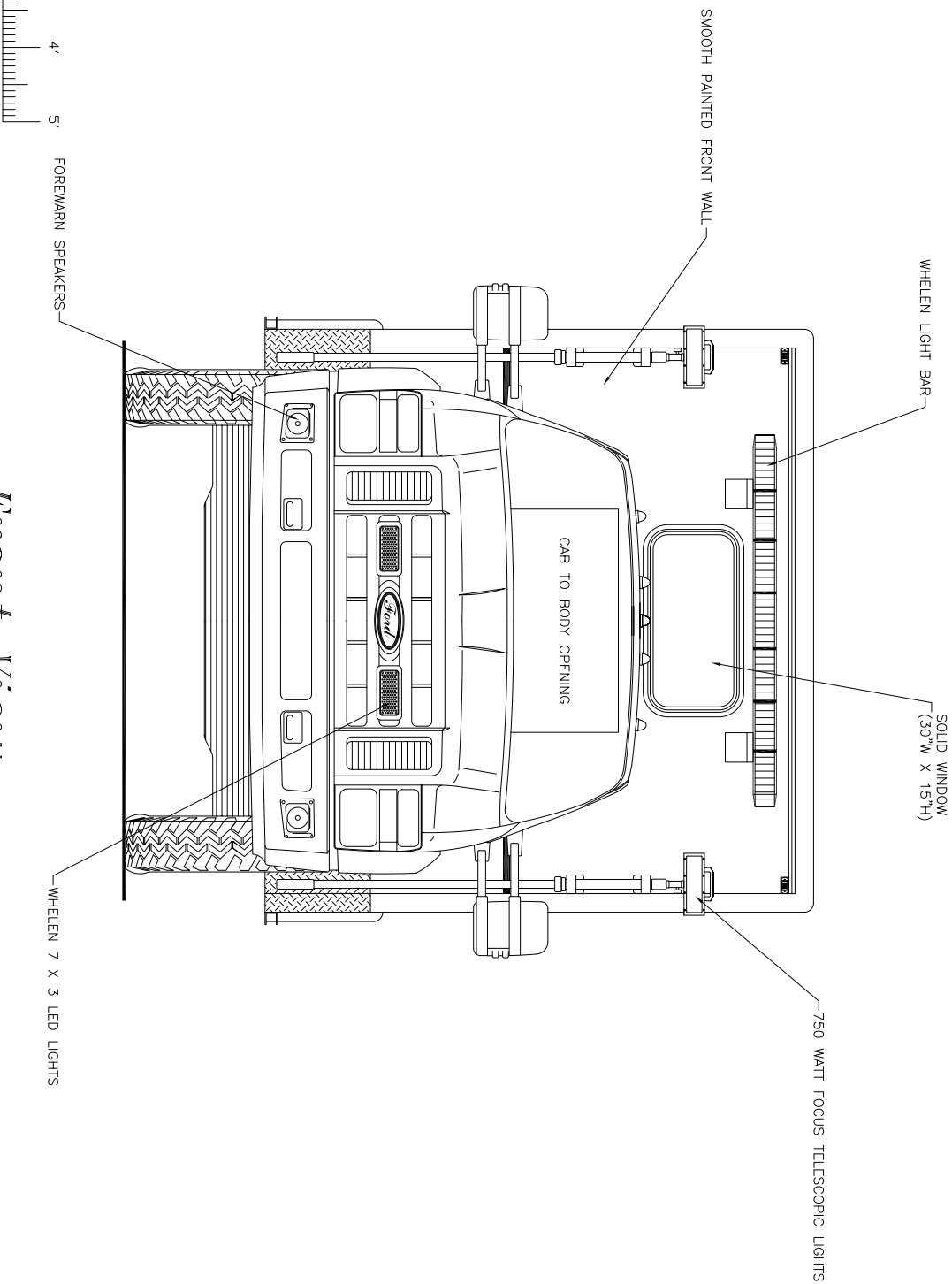
Curbside Overall

THESE DESIGN/ENGINEERING DRAWINGS ARE THE PROPERTY OF EMERGENCY VEHICLES, INC. THEY ARE PROPRIETARY AND ARE FOR THE EXCLUSIVE USE OF THE CLIENT. ANY REPRODUCTION OR USE OF THIS DATA TO A THIRD PARTY IS PROHIBITED.

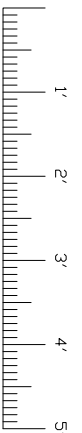
REVISION	DATE
REVISION 1	-
REVISION 2	-
REVISION 3	-
REVISION 4	-
REVISION 5	-

DATE: 10/29/07

*2008 EMI 14' Crew Demo
Lake Park, Florida*



Front View

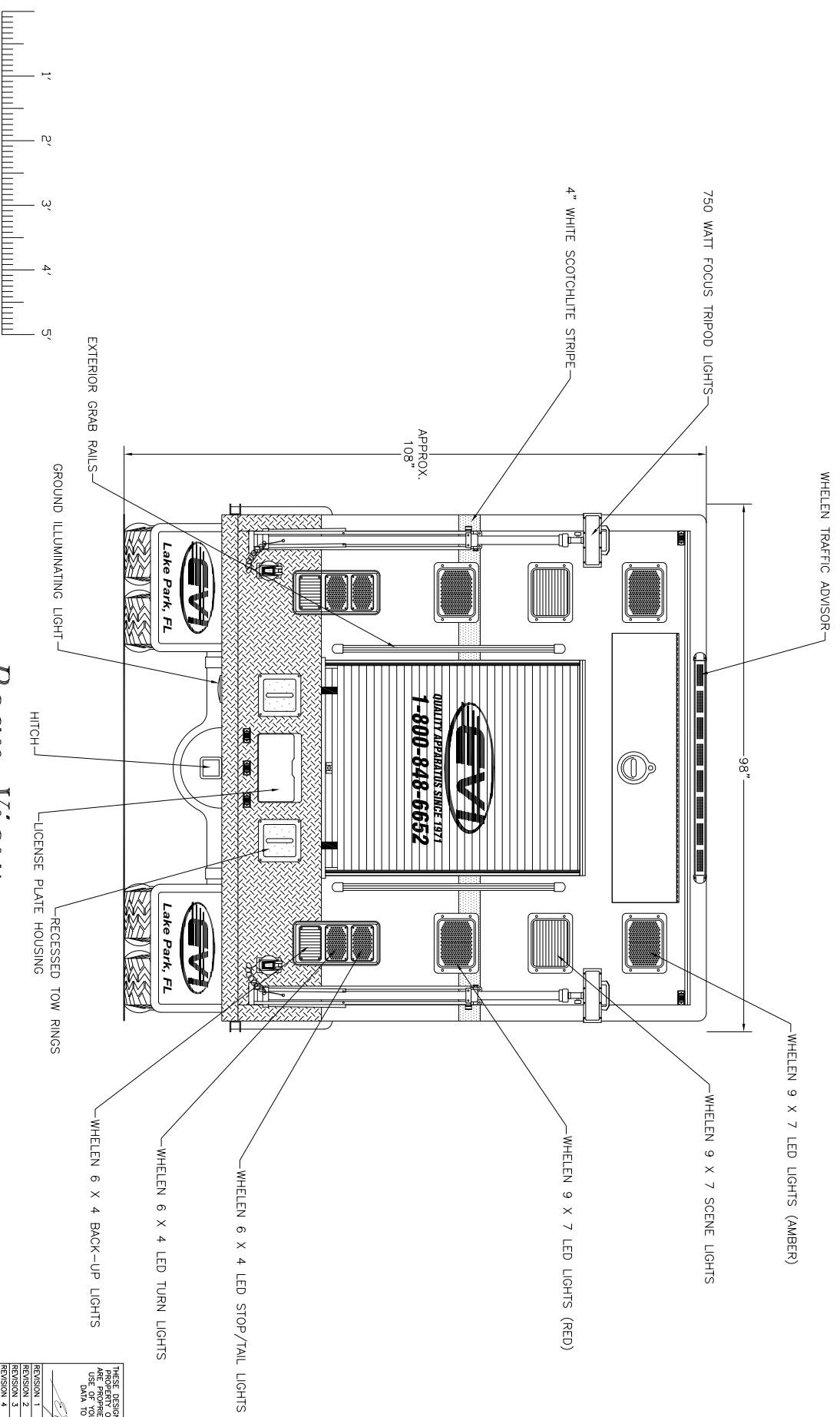


PRODDWG\08-14FT-DEMO\09\NS\102907

THESE DESIGN/ENGINEERING DRAWINGS ARE THE PROPERTY OF EMERGENCY VEHICLES, INC. THEY ARE NOT TO BE REPRODUCED OR TRANSMITTED IN ANY FORM OR BY ANY MEANS, ELECTRONIC OR MECHANICAL, INCLUDING PHOTOCOPYING, RECORDING, OR BY ANY INFORMATION STORAGE AND RETRIEVAL SYSTEM, WITHOUT THE WRITTEN PERMISSION OF EMERGENCY VEHICLES, INC. ANY UNAUTHORIZED USE OF THESE DRAWINGS TO A THIRD PARTY IS PROHIBITED.

REVISION 1	-	DATE: 10/29/07
REVISION 2	-	
REVISION 3	-	
REVISION 4	-	
REVISION 5	-	

2008 EMI 14' Crew Demo Lake Park, Florida

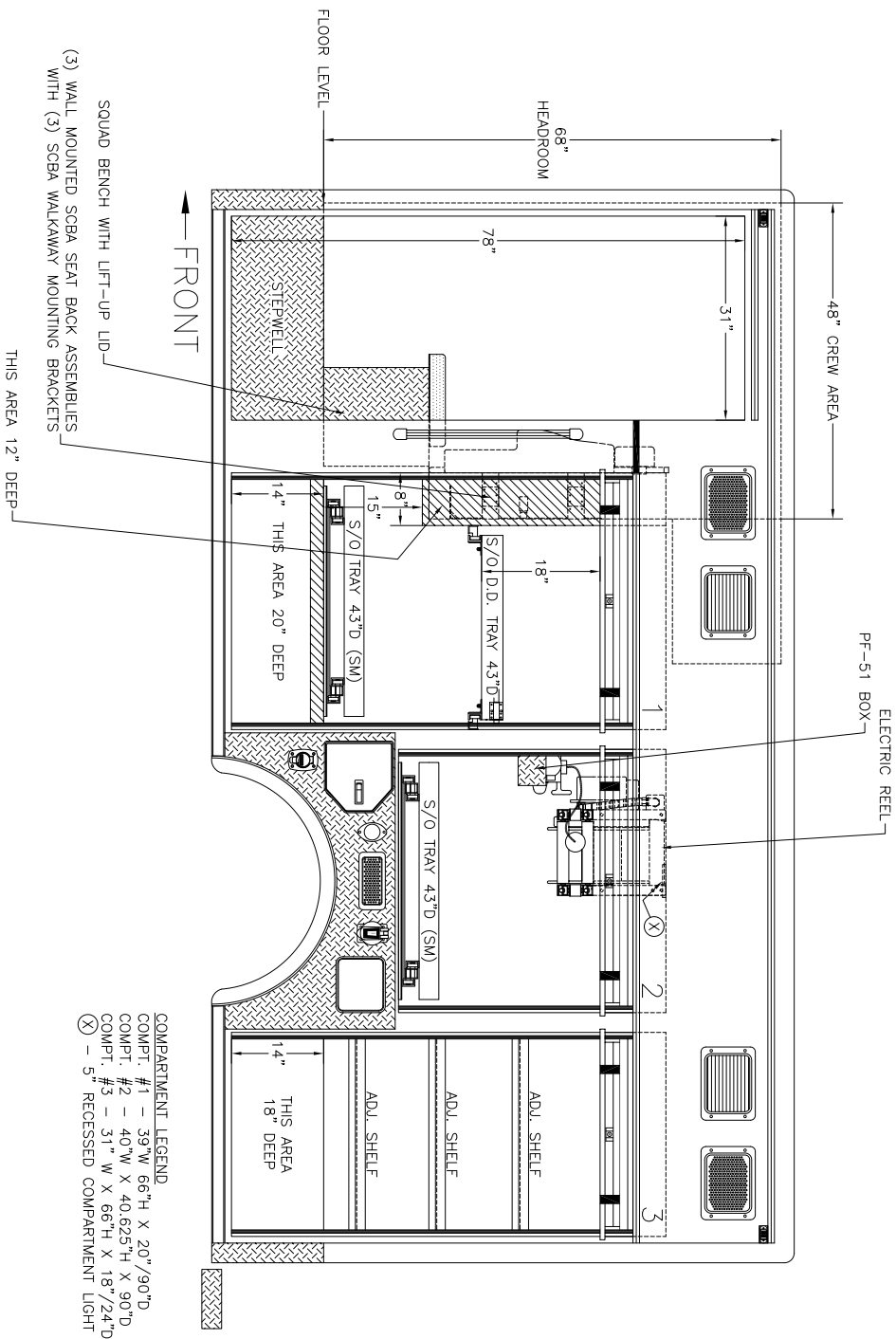


Rear View

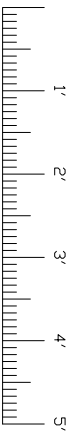
THESE DESIGN/ENGINEERING DRAWINGS ARE THE PROPERTY OF EMERGENCY VEHICLES, INC. THEY ARE NOT TO BE REPRODUCED OR TRANSMITTED IN ANY FORM OR BY ANY MEANS, ELECTRONIC OR MECHANICAL, INCLUDING PHOTOCOPYING, RECORDING, OR BY ANY INFORMATION STORAGE AND RETRIEVAL SYSTEM, WITHOUT THE WRITTEN PERMISSION OF EMERGENCY VEHICLES, INC. THIS DRAWING IS A THIRD PARTY IS PROHIBITED.

REVISION	DATE
REVISION 1	-
REVISION 2	-
REVISION 3	-
REVISION 4	-
REVISION 5	-

2008 EMI 14' Crew Demo Lake Park, Florida



COMPARTMENT LEGEND
 COMPT. #1 - 39"W X 66"H X 20"/90"D
 COMPT. #2 - 40"W X 40.625"H X 90"D
 COMPT. #3 - 31" W X 66"H X 18"/24"D
 (X) - 5" RECESSED COMPARTMENT LIGHT

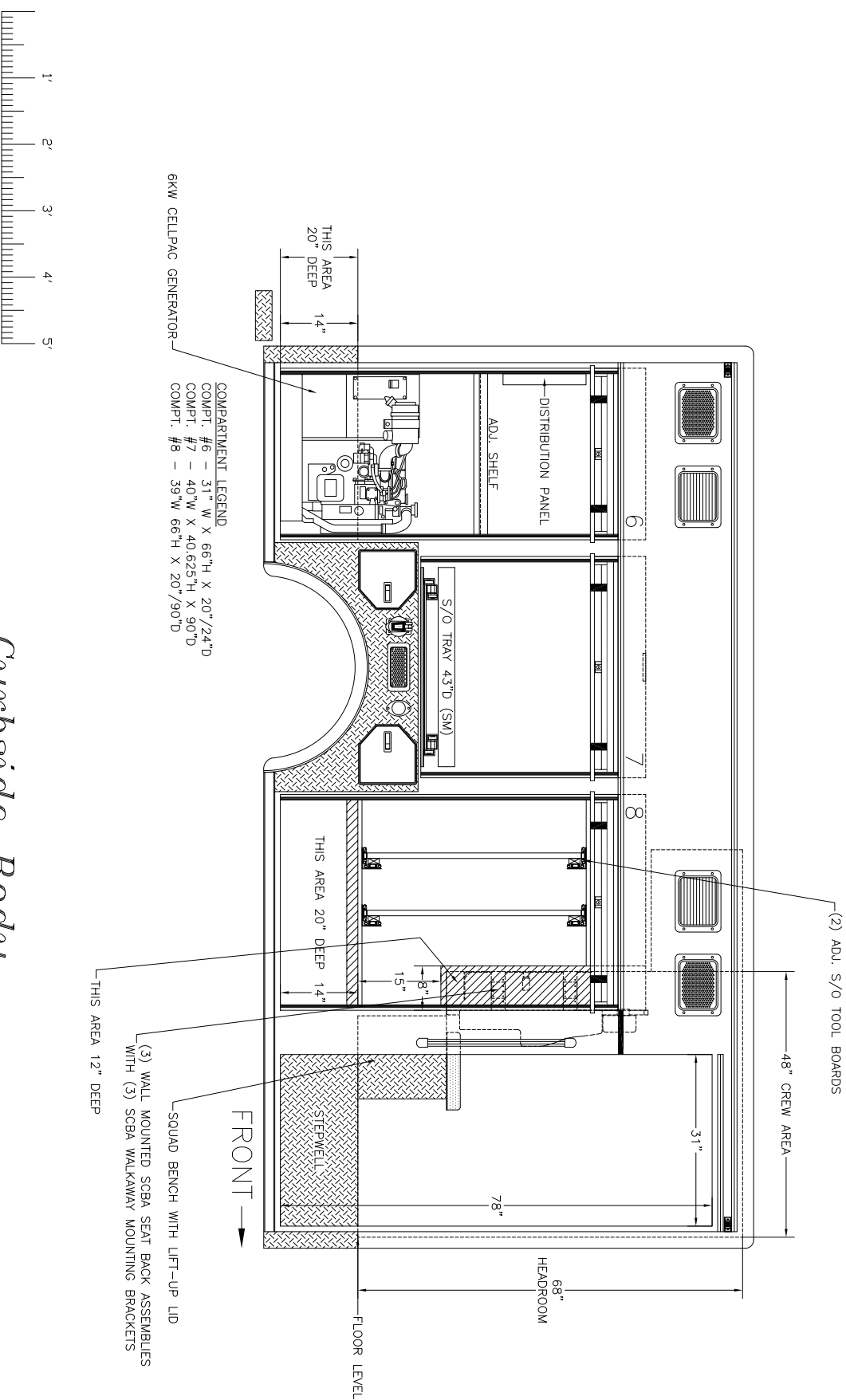


Streetside Body

REVISION 1	-	DATE: 10/29/07
REVISION 2	-	
REVISION 3	-	
REVISION 4	-	
REVISION 5	-	

THESE DESIGN/ENGINEERING DRAWINGS ARE THE PROPERTY OF EMERGENCY VEHICLES, INC. THEY ARE NOT TO BE REPRODUCED OR TRANSMITTED IN ANY FORM OR BY ANY MEANS, ELECTRONIC OR MECHANICAL, INCLUDING PHOTOCOPYING, RECORDING, OR BY ANY INFORMATION STORAGE AND RETRIEVAL SYSTEM, WITHOUT THE WRITTEN PERMISSION OF EMERGENCY VEHICLES, INC. ANY UNAUTHORIZED USE OF THESE DRAWINGS BY A THIRD PARTY IS PROHIBITED.

2008 EMI 14' Crew Demo Lake Park, Florida

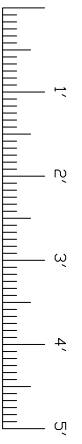
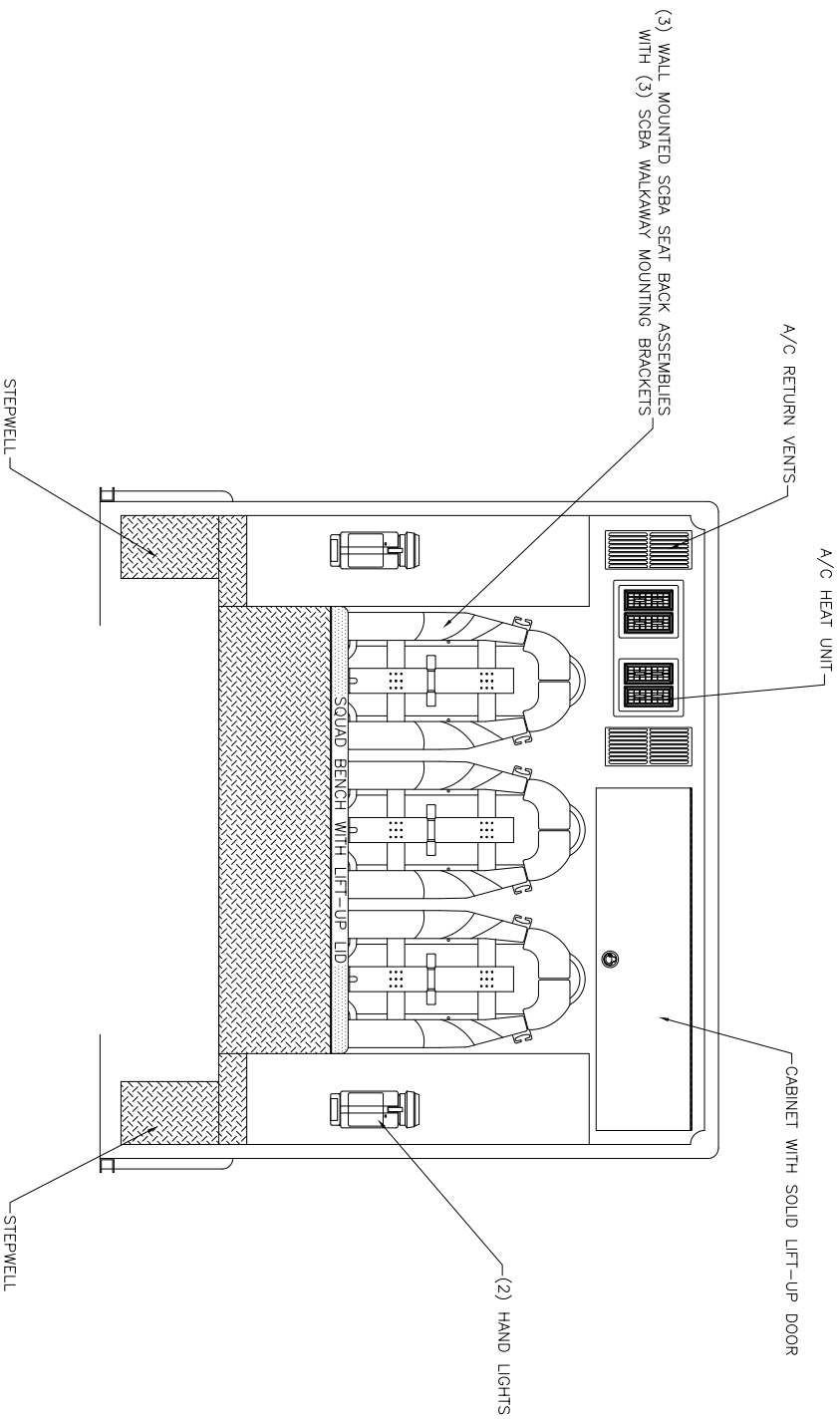


Curbside Body

THESE DESIGN/ENGINEERING DRAWINGS ARE THE PROPERTY OF EMERGENCY VEHICLES, INC. THESE DRAWINGS ARE TO BE USED FOR THE EXCLUSIVE USE OF THE CLIENT AND NO PARTS OF THESE DRAWINGS OR DATA TO A THIRD PARTY IS PROHIBITED.

REVISION	DATE
REVISION 1	-
REVISION 2	-
REVISION 3	-
REVISION 4	-
REVISION 5	-

*2008 EMI 14' Crew Demo
Lake Park, Florida*

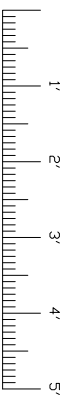
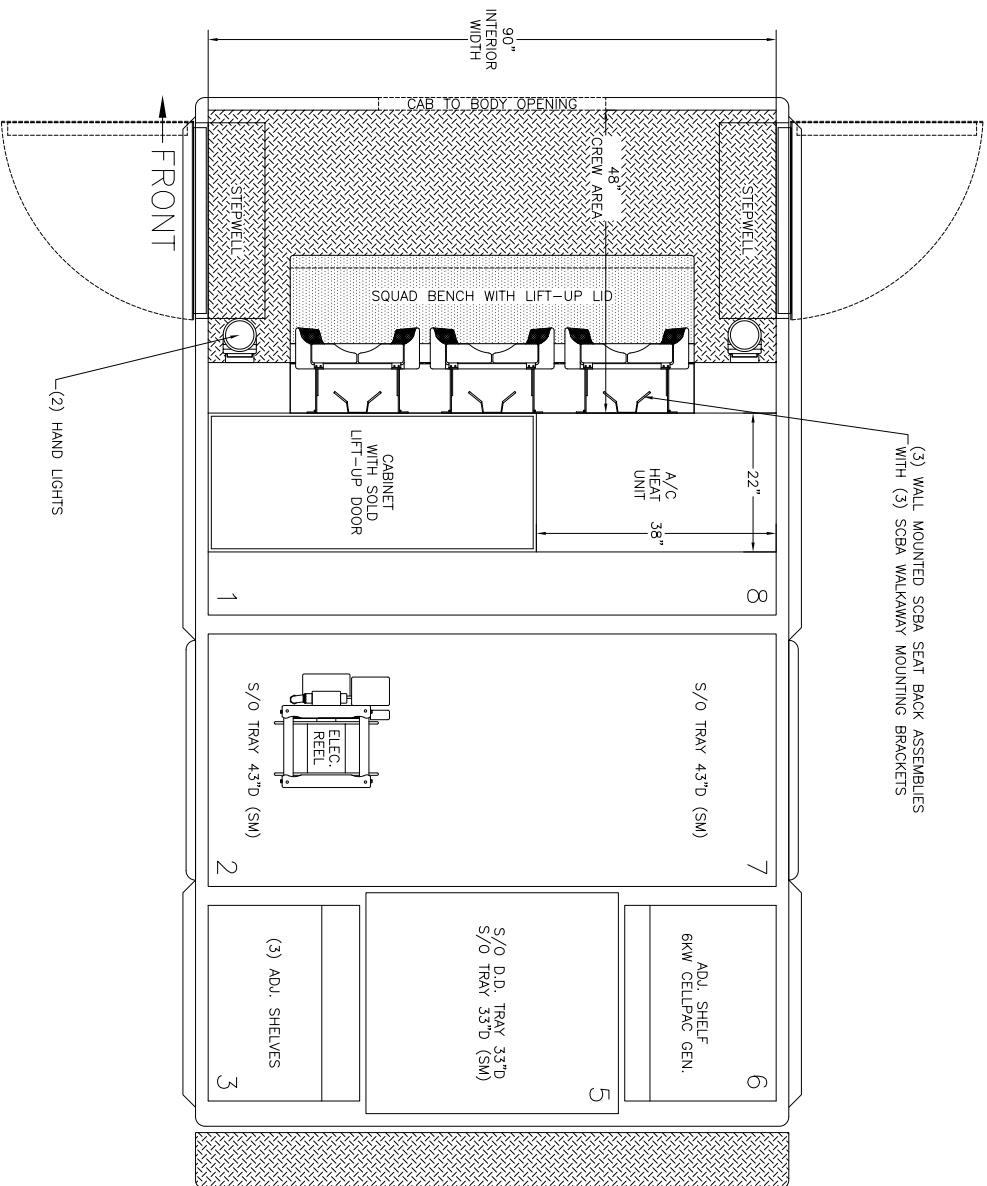


Crew View

THESE DESIGN/ENGINEERING DRAWINGS ARE THE PROPERTY OF EMERGENCY VEHICLES, INC. THEY ARE PROPRIETARY AND ARE FOR THE EXCLUSIVE USE OF THE CLIENT. REPRODUCTION OR DISTRIBUTION TO A THIRD PARTY IS PROHIBITED.

REVISION 1	-	DATE: 10/29/07
REVISION 2	-	
REVISION 3	-	
REVISION 4	-	
REVISION 5	-	

*2008 EMI 14' Crew Demo
Lake Park, Florida*



Body Planview

THESE DESIGN/ENGINEERING DRAWINGS ARE THE PROPERTY OF EMERGENCY VEHICLES, INC. THEY ARE PROPRIETARY AND ARE FOR THE EXCLUSIVE USE OF THE CLIENT. ANY REUSE OR DISTRIBUTION OF THIS DATA TO A THIRD PARTY IS PROHIBITED.

REVISION 1	-	DATE: 10/29/07
REVISION 2	-	
REVISION 3	-	
REVISION 4	-	
REVISION 5	-	