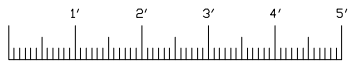
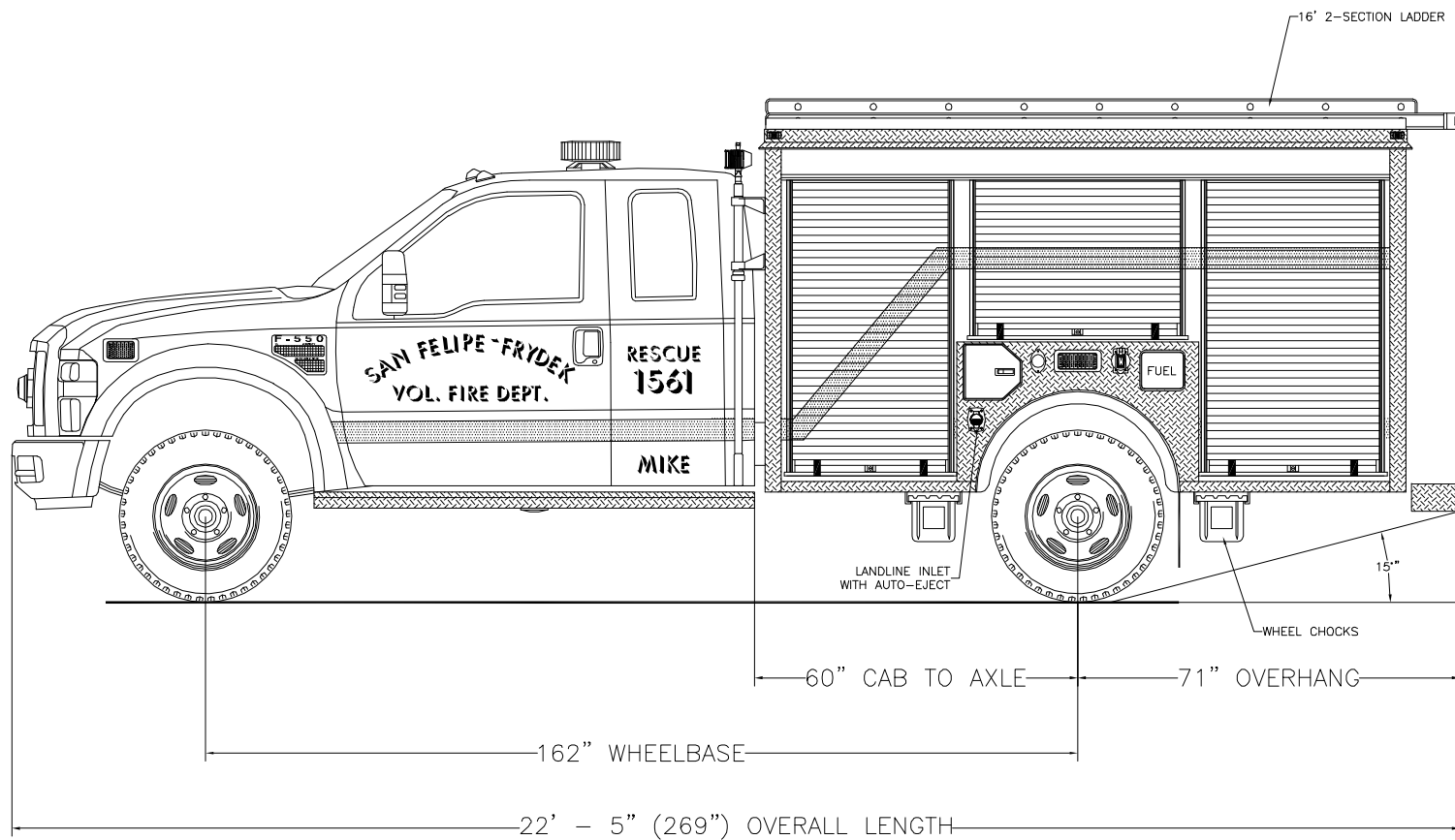


EMERGENCY VEHICLES, INC.

*San Felipe - Frydek
San Felipe, Texas*

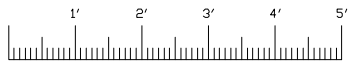
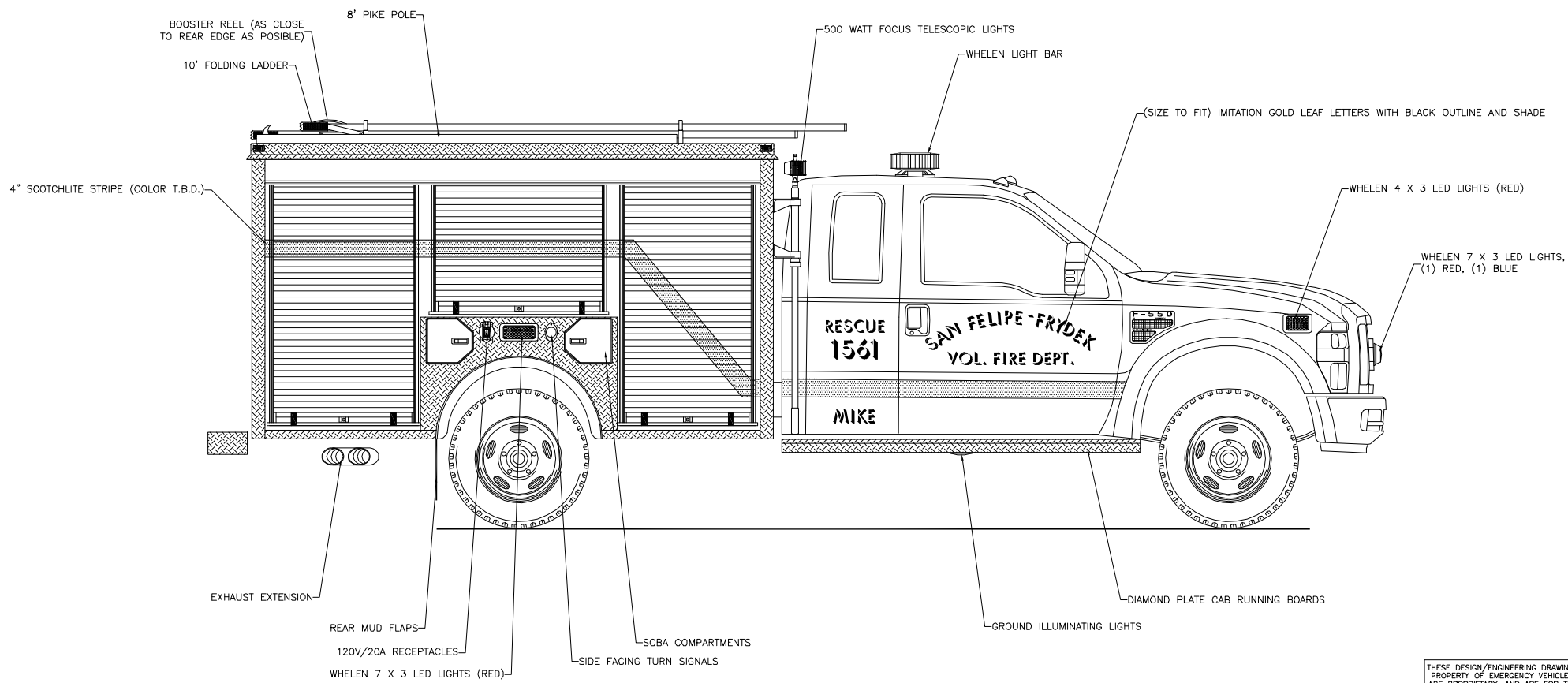


Streetside Overall

THESE DESIGN/ENGINEERING DRAWING(S) ARE THE PROPERTY OF EMERGENCY VEHICLES, INC. THEY ARE PROPRIETARY, AND ARE FOR THE EXCLUSIVE USE OF YOUR ENTITY. ANY DIVULGING OF THIS DATA TO A THIRD PARTY IS PROHIBITED.

E. J. Jansen DATE: 05/02/08

REVISION 1	NS - 07/14/08
REVISION 2	NS - 08/18/08
REVISION 3	-
REVISION 4	-
REVISION 5	-

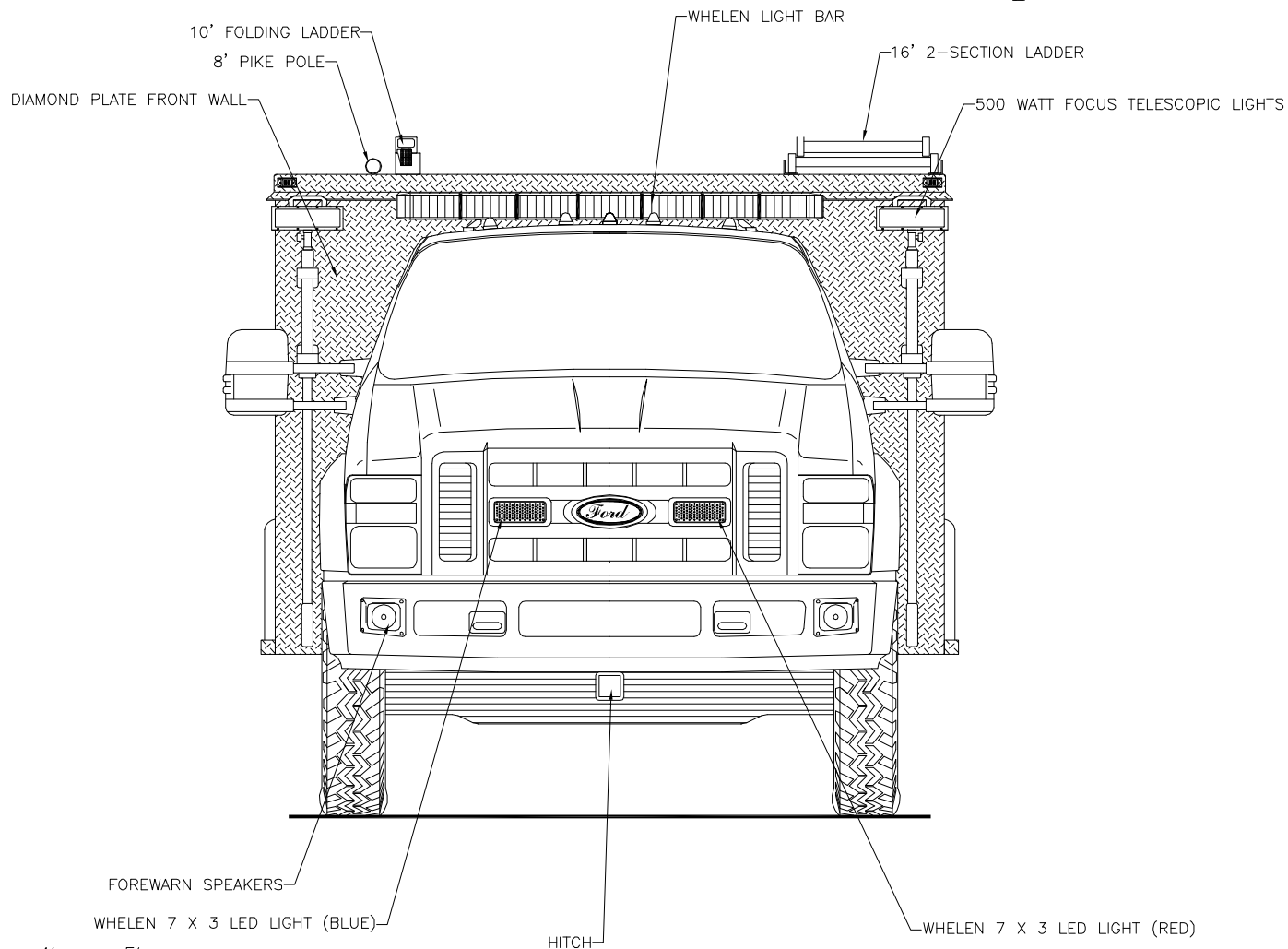


Curbside Overall

THESE DESIGN/ENGINEERING DRAWING(S) ARE THE PROPERTY OF EMERGENCY VEHICLES, INC. THEY ARE PROPRIETARY, AND ARE FOR THE EXCLUSIVE USE OF YOUR ENTITY. ANY DIVULGING OF THIS DATA TO A THIRD PARTY IS PROHIBITED.

E. J. ... DATE: 05/02/08

REVISION 1	NS - 07/14/08
REVISION 2	NS - 08/18/08
REVISION 3	-
REVISION 4	-
REVISION 5	-

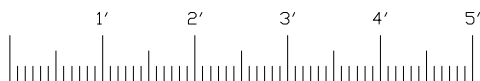
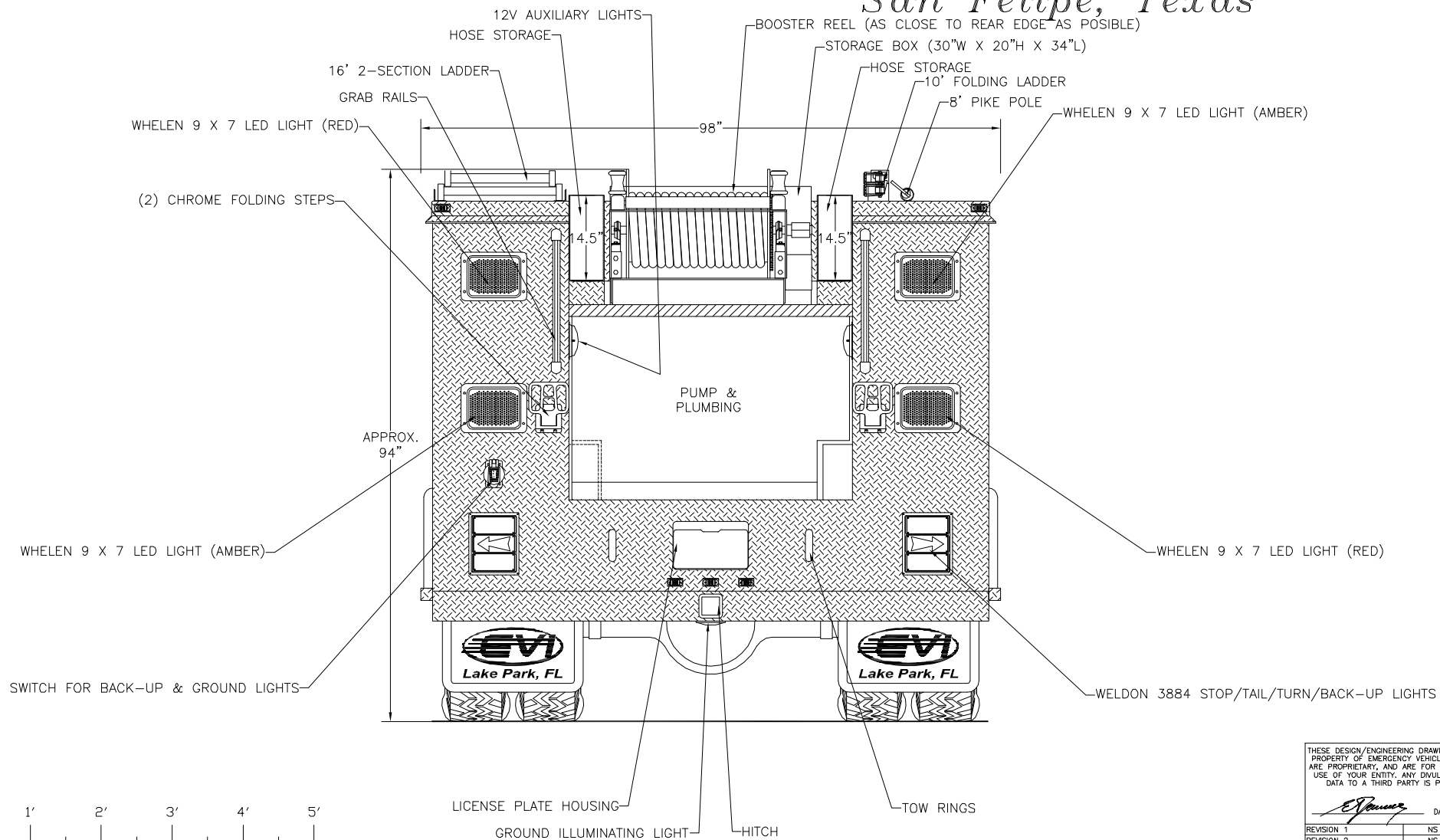


Front View

THESE DESIGN/ENGINEERING DRAWING(S) ARE THE PROPERTY OF EMERGENCY VEHICLES, INC. THEY ARE PROPRIETARY, AND ARE FOR THE EXCLUSIVE USE OF YOUR ENTITY. ANY DIVULGING OF THIS DATA TO A THIRD PARTY IS PROHIBITED.

E. J. ... DATE: 05/02/08

REVISION 1	NS - 07/14/08
REVISION 2	NS - 08/18/08
REVISION 3	-
REVISION 4	-
REVISION 5	-



Rear View

THESE DESIGN/ENGINEERING DRAWING(S) ARE THE PROPERTY OF EMERGENCY VEHICLES, INC. THEY ARE PROPRIETARY, AND ARE FOR THE EXCLUSIVE USE OF YOUR ENTITY. ANY DIVULGING OF THIS DATA TO A THIRD PARTY IS PROHIBITED.

E. J. ... DATE: 05/02/08

REVISION 1	NS - 07/14/08
REVISION 2	NS - 08/18/08
REVISION 3	NS - 08/29/08
REVISION 4	-
REVISION 5	-