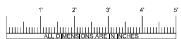
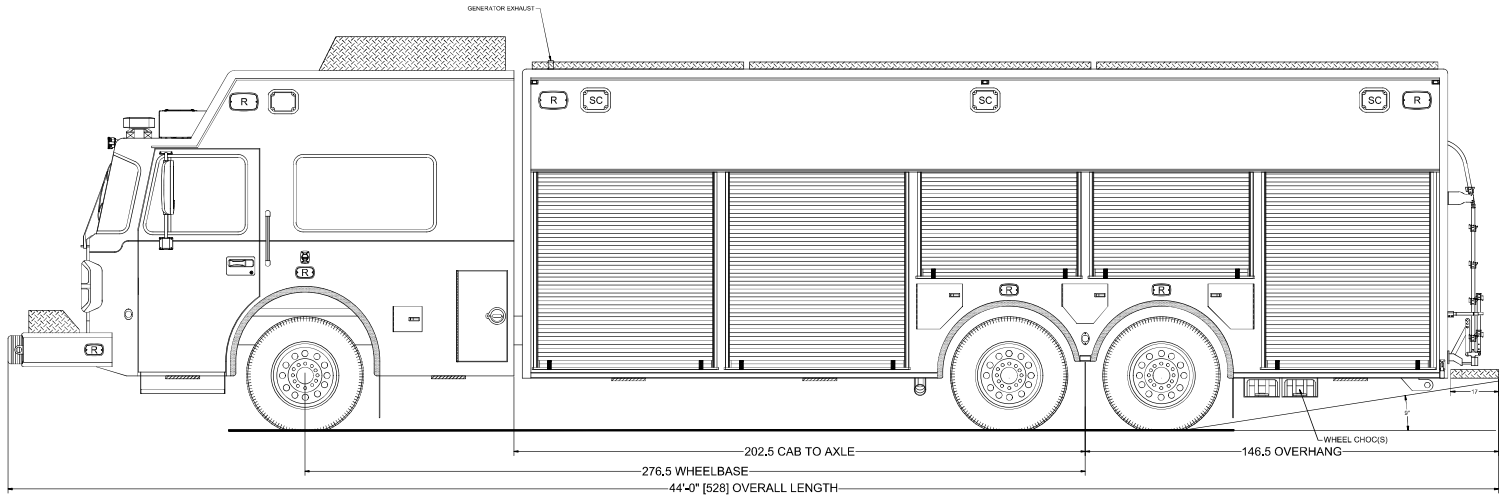




705 13TH STREET, LAKE PARK, FL
800-848-6652

Sunrise Fire-Rescue
Sunrise, Florida



Streetside Overall

NOTICE
THIS DRAWING IS A REPRESENTATION OF THE VEHICLE AND/OR COMPONENTS AS DESCRIBED IN THE SPECIFICATIONS PER THE DATE SHOWN. EVI RESERVES THE RIGHT TO MAKE CHANGES, AS NECESSARY, DURING THE PRODUCTION PROCESS TO ACCOMMODATE BEST MANUFACTURING PROCESSES AND TO ENSURE WE PROVIDE A CONSISTENTLY HIGH QUALITY PRODUCT.

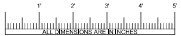
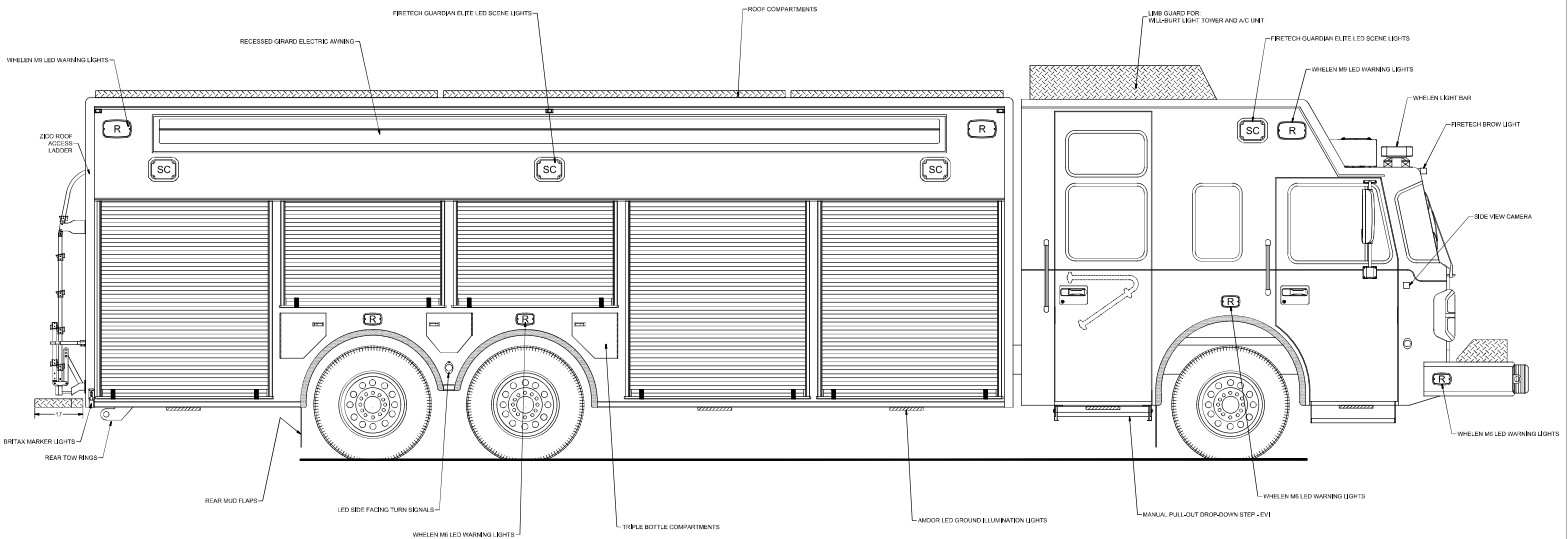
REVISION 1	NS - 06/10/21	THESE DESIGN/ENGINEERING DRAWINGS ARE THE PROPERTY OF EMERGENCY VEHICLES INC. THEY ARE PROPRIETARY AND ARE FOR THE EXCLUSIVE USE OF YOUR ENTITY. ANY REPRODUCING OF THIS DATA TO A THIRD PARTY IS PROHIBITED.
REVISION 2	-	
REVISION 3	-	
REVISION 4	-	
REVISION 5	-	
REVISION 6	-	DATE: 05/07/21

PRODDWG\3104_SUNRISE_FL\3104_27NW\NS\05072021



705 13TH STREET, LAKE PARK, FL
800-848-6652

Sunrise Fire-Rescue Sunrise, Florida



Curbside Overall

NOTICE
THIS DRAWING IS A REPRESENTATION OF THE VEHICLE AND/OR COMPONENTS AS DESCRIBED IN THE SPECIFICATIONS PER THE DATE SHOWN. EVI RESERVES THE RIGHT TO MAKE CHANGES, AS NECESSARY, DURING THE PRODUCTION PROCESS TO ACCOMMODATE BEST MANUFACTURING PRACTICES AND TO ENSURE WE PROVIDE A CONSISTENTLY HIGH QUALITY PRODUCT.

REVISION 1	NS - 06/10/21
REVISION 2	-
REVISION 3	-
REVISION 4	-
REVISION 5	-
REVISION 6	-

THESE DESIGN/ENGINEERING DRAWINGS ARE THE PROPERTY OF EMERGENCY VEHICLES, INC. THEY ARE PROPRIETARY AND ARE FOR THE EXCLUSIVE USE OF YOUR ENTITY. ANY DOUBLING OF THIS DATA TO A THIRD PARTY IS PROHIBITED.

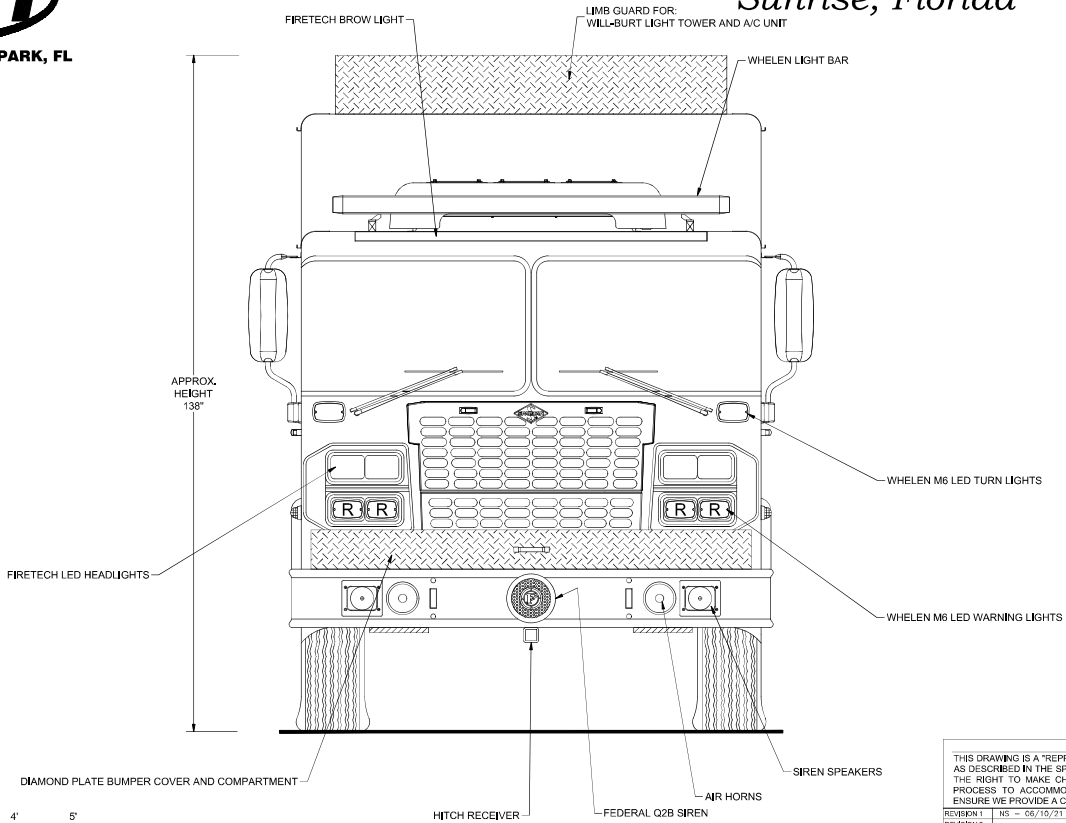
[Signature] DATE: 05/07/21

PRODDWG\3104_SUNRISE_FL\3104_27NWI\NS\05072021



705 13TH STREET, LAKE PARK, FL
800-848-6652

Sunrise Fire-Rescue Sunrise, Florida



Front View

NOTICE

THIS DRAWING IS A REPRESENTATION OF THE VEHICLE AND/OR COMPONENTS AS DESCRIBED IN THE SPECIFICATIONS PER THE DATE SHOWN. EVI RESERVES THE RIGHT TO MAKE CHANGES, AS NECESSARY, DURING THE PRODUCTION PROCESS TO ACCOMMODATE BEST MANUFACTURING PROCESSES AND TO ENSURE WE PROVIDE A CONSISTENTLY HIGH QUALITY PRODUCT.

REVISION 1	NS - 06/15/21	THESE DESIGN/ENGINEERING DRAWINGS ARE THE PROPERTY OF EMERGENCY SERVICES, INC. THEY ARE PROPRIETARY AND ARE FOR THE EXCLUSIVE USE OF YOUR ENTITY. ANY DIVULGING OF THIS DATA TO A THIRD PARTY IS PROHIBITED.
REVISION 2		
REVISION 3		
REVISION 4		
REVISION 5		
REVISION 6		

DATE: 05/07/21

PRODDWG\3104_SUNRISE_FL\3104_27NWI\NS\05072021

