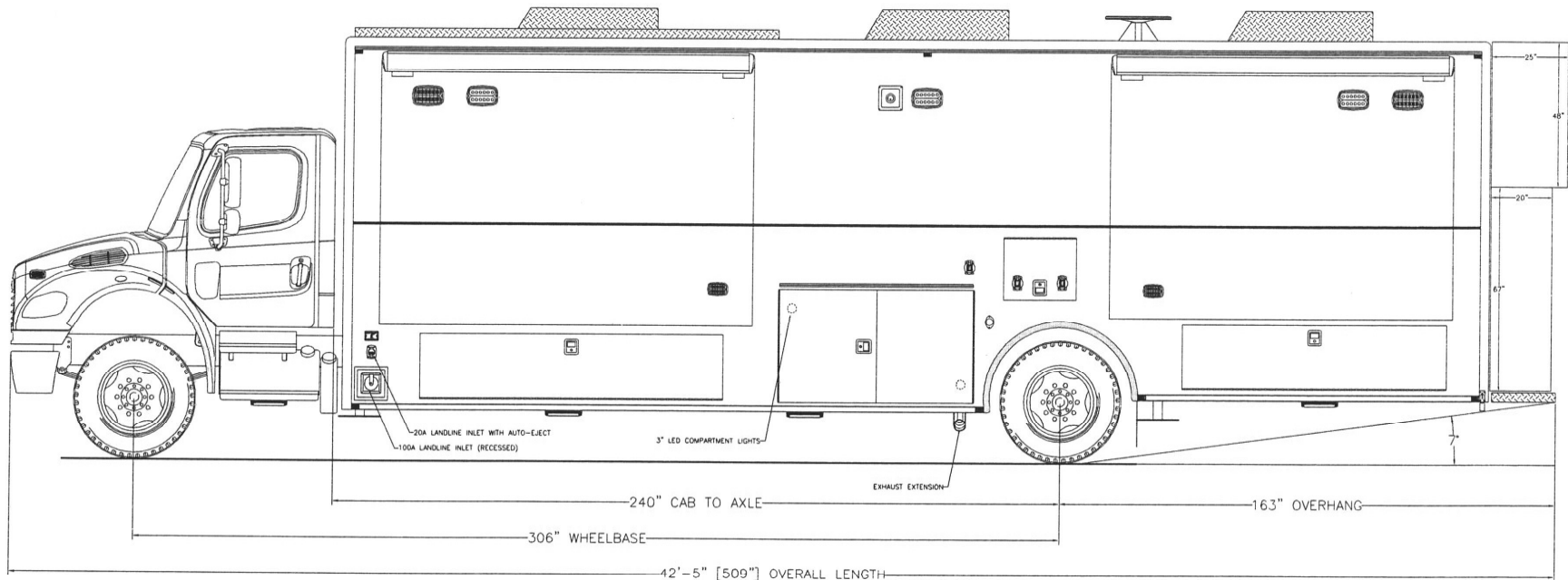




705 13TH STREET, LAKE PARK, FL
800-848-6652

REVISED
05/03/19

*Puerto Rico EMA
San Juan, Puerto Rico*



THESE DESIGN/ENGINEERING DRAWING(S) ARE THE PROPERTY OF EMERGENCY VEHICLES, INC. THEY ARE PROPRIETARY, AND ARE FOR THE EXCLUSIVE USE OF YOUR ENTITY. ANY DIVULGING OF THIS DATA TO A THIRD PARTY IS PROHIBITED.

<i>E. J. [Signature]</i>		DATE: 04/09/18
REVISION 1	NS	04/09/18
REVISION 2	NS	05/03/19
REVISION 3	-	-
REVISION 4	-	-
REVISION 5	-	-



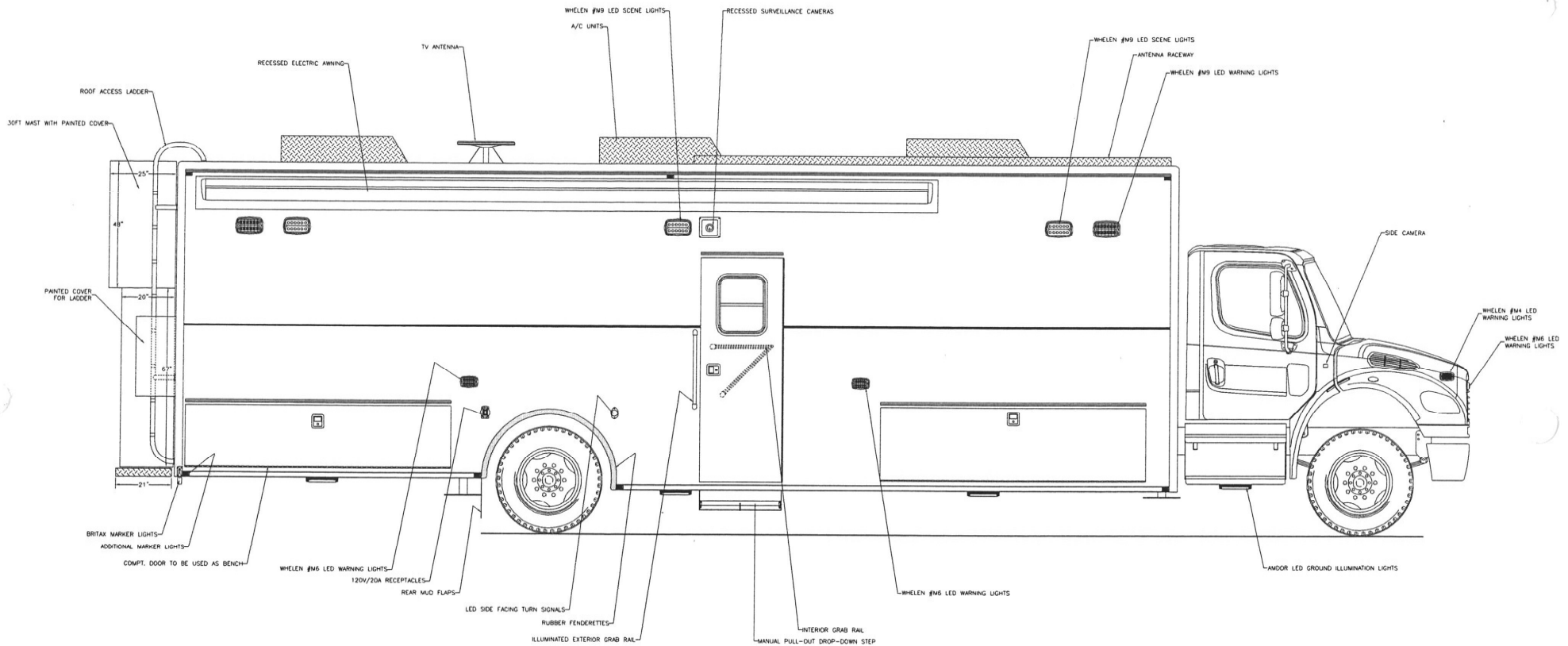
Streetside Overall



705 13TH STREET, LAKE PARK, FL
800-848-6652

Puerto Rico EMA
San Juan, Puerto Rico

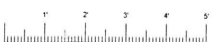
REVISED
05/03/19



THESE DESIGN/ENGINEERING DRAWING(S) ARE THE PROPERTY OF EMERGENCY VEHICLES, INC. THEY ARE PROPRIETARY, AND ARE FOR THE EXCLUSIVE USE OF YOUR ENTITY. ANY DIVULGING OF THIS DATA TO A THIRD PARTY IS PROHIBITED.

E. J. Rivera DATE: 04/09/18

REVISION 1	BL - 08/21/18
REVISION 2	NS - 04/09/19
REVISION 3	NS - 05/03/19
REVISION 4	-
REVISION 5	-

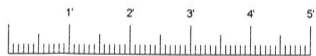
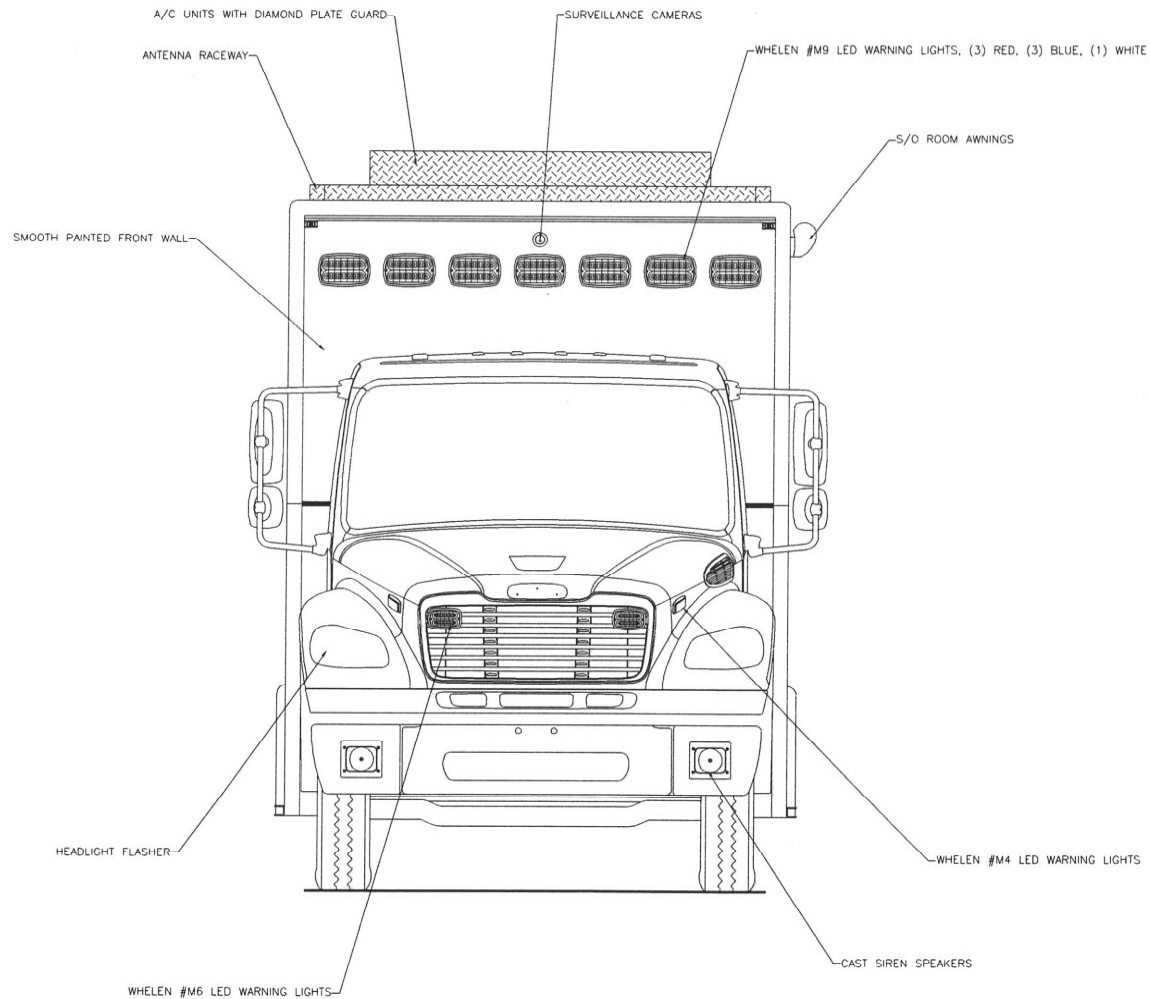


Curbside Overall



705 13TH STREET, LAKE PARK, FL
800-848-6652

*Puerto Rico EMA
San Juan, Puerto Rico*



Front View

THESE DESIGN/ENGINEERING DRAWING(S) ARE THE PROPERTY OF EMERGENCY VEHICLES, INC. THEY ARE PROPRIETARY, AND ARE FOR THE EXCLUSIVE USE OF YOUR ENTITY. ANY DIVULGING OF THIS DATA TO A THIRD PARTY IS PROHIBITED.

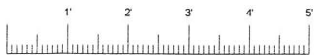
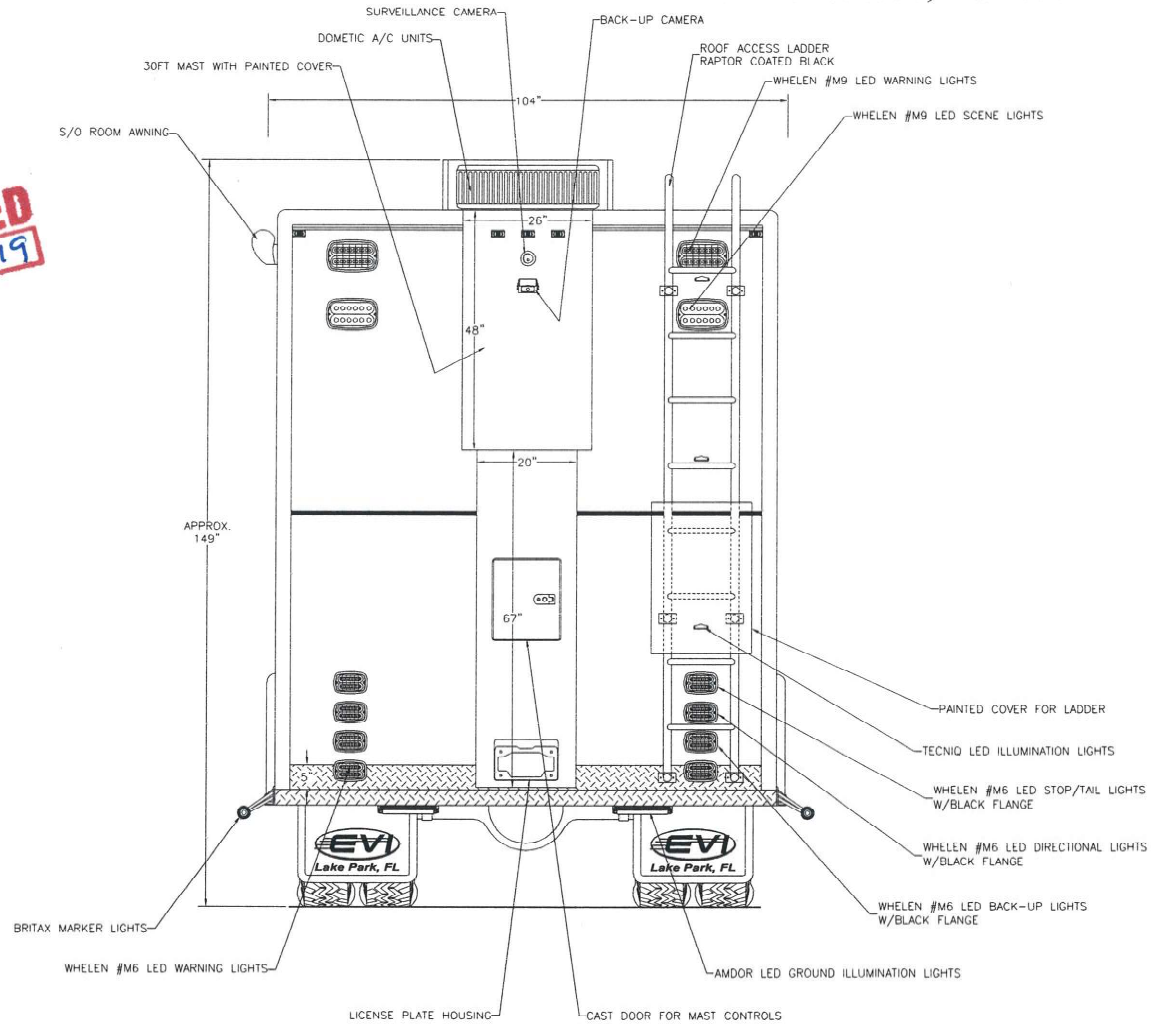
<i>E. J. Rivera</i>		DATE: 04/09/18
REVISION 1	-	
REVISION 2	-	
REVISION 3	-	
REVISION 4	-	
REVISION 5	-	



705 13TH STREET, LAKE PARK, FL
800-848-6652

REVISED
04-09-19

Puerto Rico EMA San Juan, Puerto Rico



Rear View

THESE DESIGN/ENGINEERING DRAWING(S) ARE THE PROPERTY OF EMERGENCY VEHICLES, INC. THEY ARE PROPRIETARY, AND ARE FOR THE EXCLUSIVE USE OF YOUR ENTITY. ANY DIVULGING OF THIS DATA TO A THIRD PARTY IS PROHIBITED.

<i>[Signature]</i> DATE: 04/09/18	
REVISION 1	BL - 08/21/18
REVISION 2	NS - 04/09/19
REVISION 3	-
REVISION 4	-
REVISION 5	-