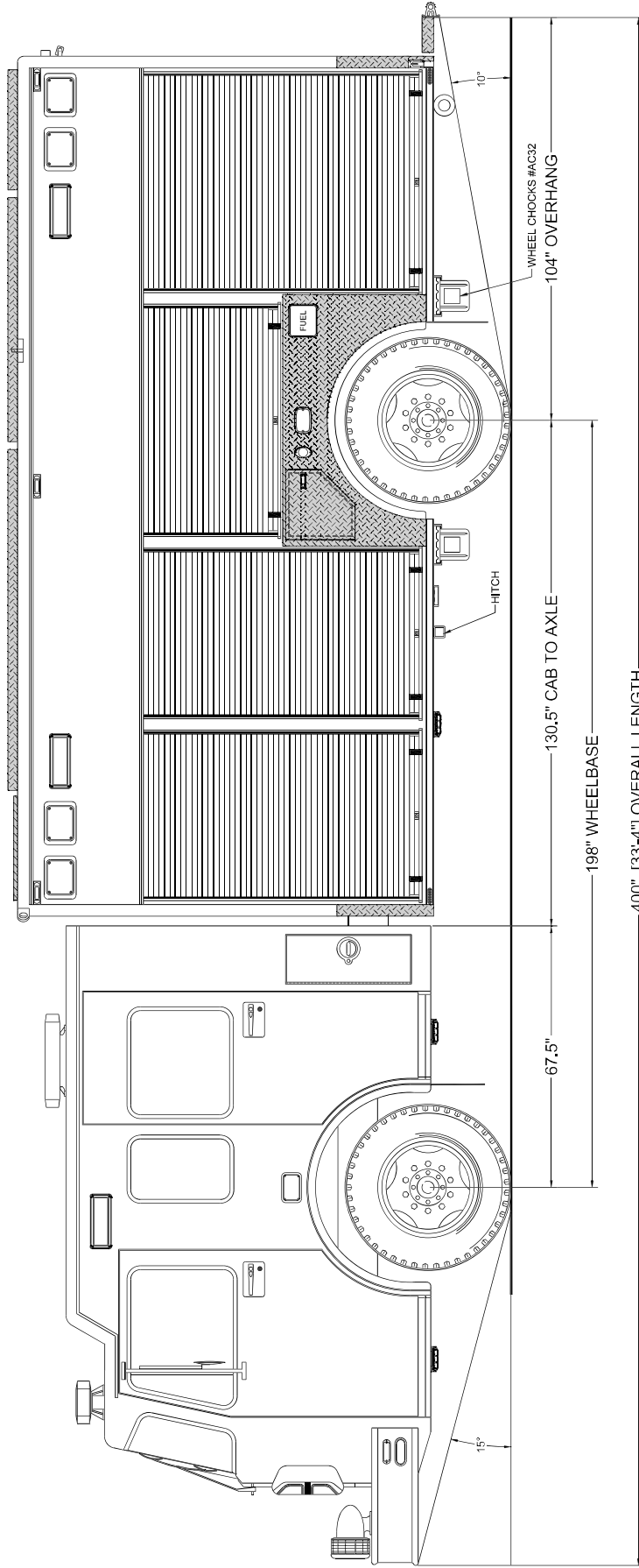


*Monroe Joint Fire District
Monroe, New York*



705 13TH STREET, LAKE PARK, FL
800-848-6652



NOTICE

THIS DRAWING IS A REPRESENTATION OF THE VEHICLE AND/OR COMPONENTS AS DESCRIBED IN THE SPECIFICATIONS PER THE DATE SHOWN. EVI RESERVES THE RIGHT TO MAKE CHANGES, AS NECESSARY, DURING THE PRODUCTION PROCESS TO ACCOMMODATE BEST MANUFACTURING PROCESSES AND TO ENSURE WE PROVIDE A CONSISTENTLY HIGH QUALITY PRODUCT.

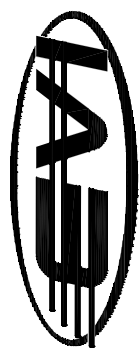
ALL DIMENSIONS UNLESS OTHERWISE SPECIFIED ARE IN INCHES. DIMENSIONS IN PARENTHESES ARE THE PROPERTY OF EMERGENCY VEHICLES, INC. THEY ARE PROPRIETARY AND ARE FOR THE EXCLUSIVE USE OF EMERGENCY VEHICLES, INC. ANY REUSE OF THIS DATA TO A THIRD PARTY IS PROHIBITED.

REVISION 1	NS - 08/24/20
REVISION 2	NS - 11/02/20
REVISION 3	NS - 12/01/20
REVISION 4	NS - 12/01/20
REVISION 5	NS - 05/24/21
REVISION 6	NS - 02/25/20

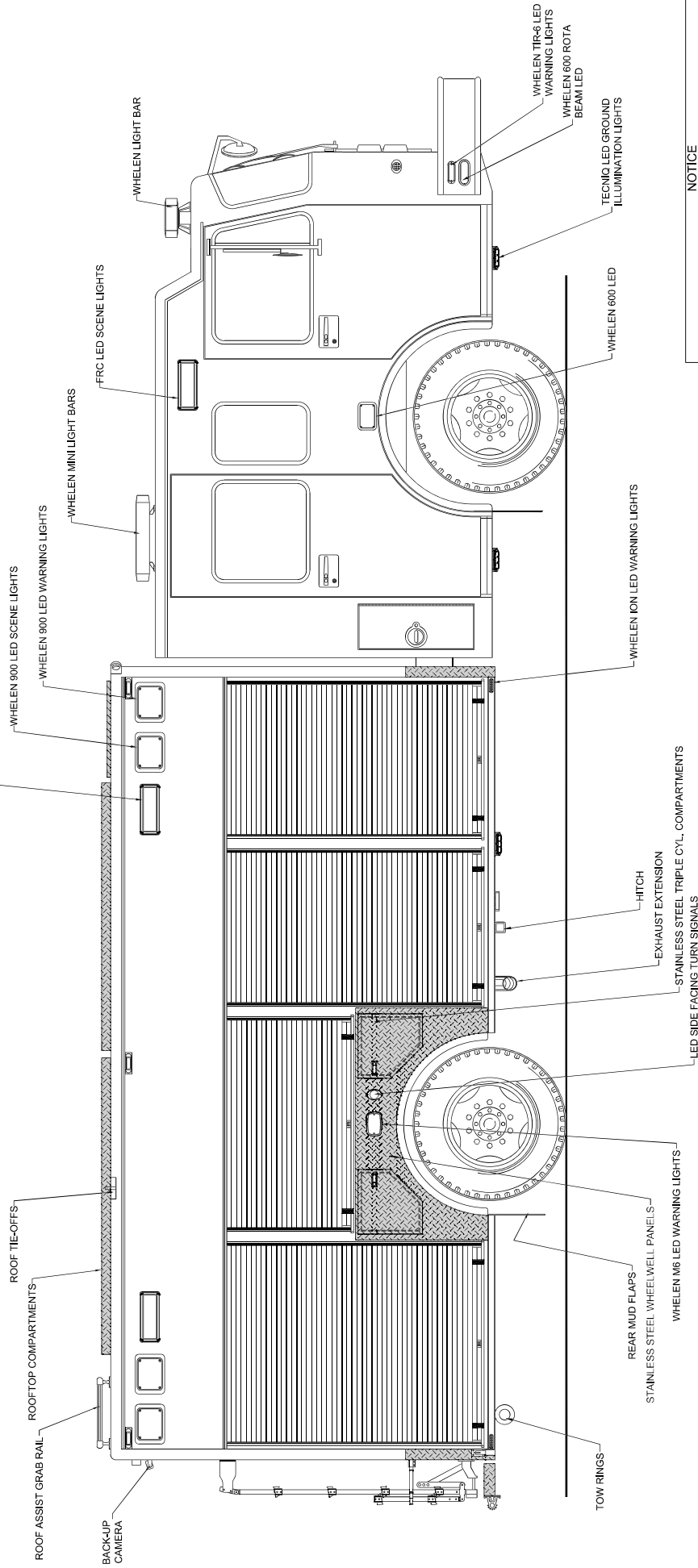


Streetside Overall

Monroe Joint Fire District Monroe, New York



705 13TH STREET, LAKE PARK, FL
800-848-6652



NOTICE
THIS DRAWING IS A REPRESENTATION OF THE VEHICLE AND/OR COMPONENTS AS DESCRIBED IN THE SPECIFICATIONS PER THE DATE SHOWN. EVI RESERVES THE RIGHT TO MAKE CHANGES, AS NECESSARY, DURING THE PRODUCTION PROCESS TO ACCOMMODATE BEST MANUFACTURING PROCESSES AND TO ENSURE WE PROVIDE A CONSISTENTLY HIGH QUALITY PRODUCT.

ALL DIMENSIONS UNLESS OTHERWISE SPECIFIED ARE IN INCHES. DIMENSIONS IN PARENTHESES ARE THE PROPERTY OF EMERGENCY VEHICLES, INC. THEY ARE PROPRIETARY, AND ARE FOR THE EXCLUSIVE USE OF THE PURCHASER. THIS DATA TO A THIRD PARTY IS PROHIBITED.

REVISION 1 NS - 09/24/20
REVISION 2 NS - 11/02/20
REVISION 3 NS - 12/01/20
REVISION 4 NS - 05/24/21
REVISION 5
REVISION 6

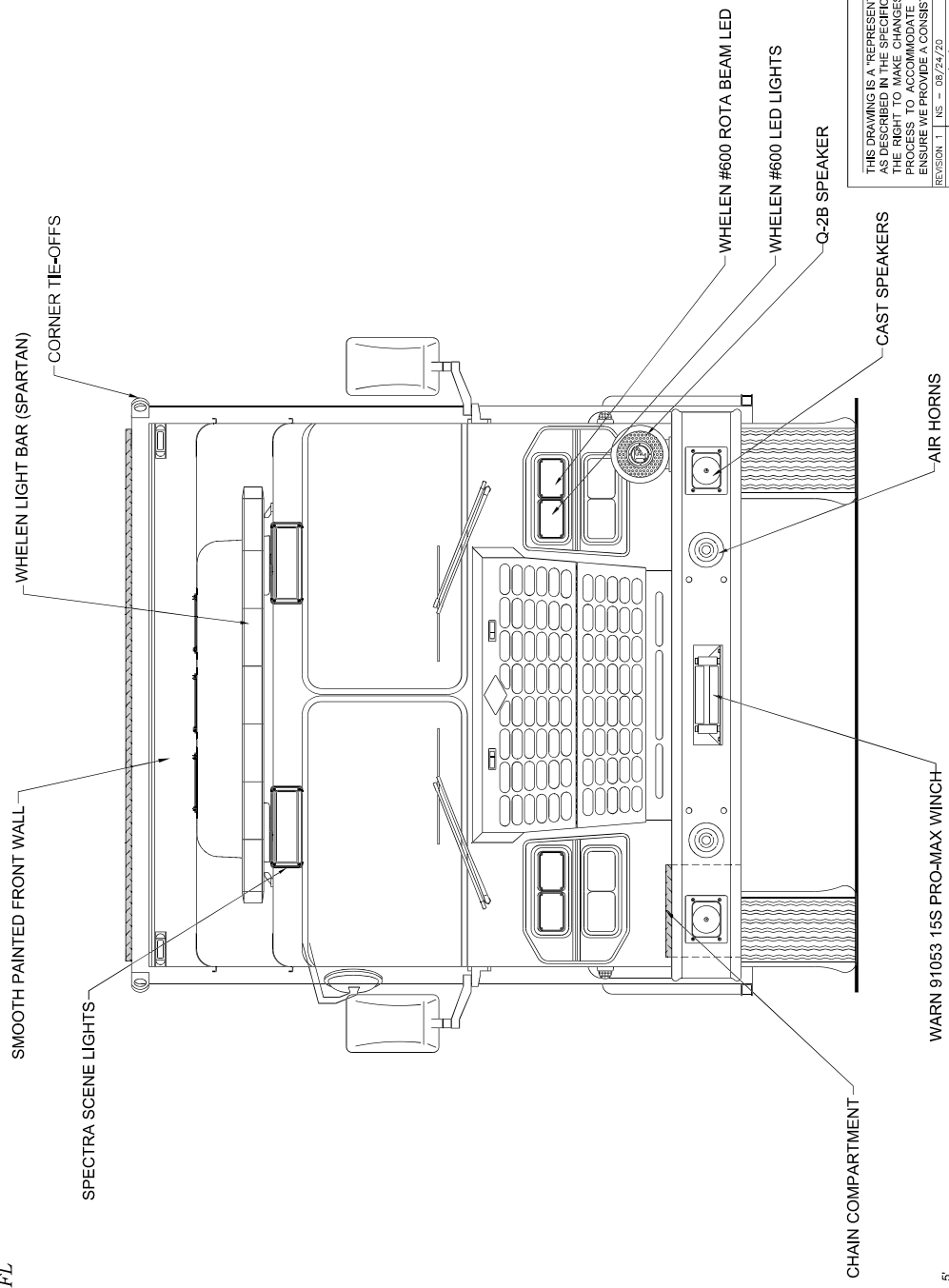
DATE: 02/25/20



Curbside Overall

Monroe Joint Fire District Monroe, New York

EVI
705 13TH STREET, LAKE PARK, FL
800-848-6652



NOTICE
THIS DRAWING IS A REPRESENTATION OF THE VEHICLE AND/OR COMPONENTS AS DESCRIBED IN THE SPECIFICATIONS PER THE DATE SHOWN. EVI RESERVES THE RIGHT TO MAKE CHANGES, AS NECESSARY, DURING THE PRODUCTION PROCESS TO ACCOMMODATE BEST MANUFACTURING PRACTICES AND TO ENSURE WE PROVIDE A CONSISTENTLY HIGH QUALITY PRODUCT.
THIS DRAWING IS THE PROPERTY OF EVI. IT IS NOT TO BE REPRODUCED OR TRANSMITTED IN ANY FORM OR BY ANY MEANS, ELECTRONIC OR MECHANICAL, INCLUDING PHOTOCOPYING, RECORDING, OR BY ANY INFORMATION STORAGE AND RETRIEVAL SYSTEM, WITHOUT THE WRITTEN PERMISSION OF EVI. ANY UNAUTHORIZED USE OF THIS DRAWING IS PROHIBITED.
DATE: 02/25/20

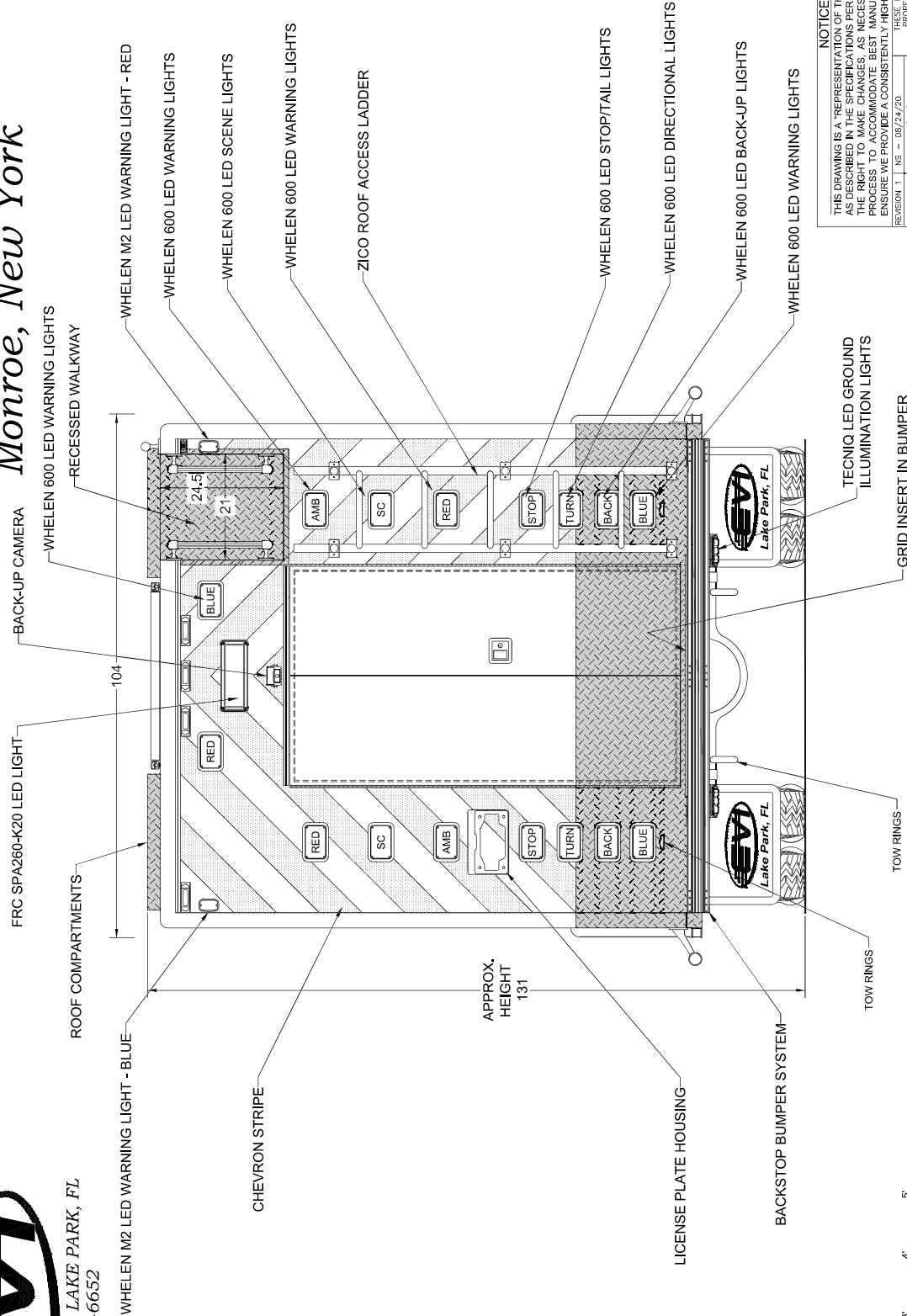
REVISION 1	NS - 09/24/20
REVISION 2	NS - 11/02/20
REVISION 3	NS - 12/01/20
REVISION 4	NS - 05/24/21
REVISION 5	NS - 05/24/21
REVISION 6	NS - 05/24/21

Front View

Monroe Joint Fire District Monroe, New York



705 13TH STREET, LAKE PARK, FL
800-848-6652



Rear View

NOTICE
THIS DRAWING IS A REPRESENTATION OF THE VEHICLE AND/OR COMPONENTS AS DESCRIBED IN THE SPECIFICATIONS PER THE DATE SHOWN. EVI RESERVES THE RIGHT TO MAKE CHANGES, AS NECESSARY, DURING THE PRODUCTION PROCESS TO ACCOMMODATE BEST MANUFACTURING PROCESSES AND TO ENSURE WE PROVIDE A CONSISTENTLY HIGH QUALITY PRODUCT.
THESE SPECIFICATIONS AND DRAWINGS ARE THE PROPERTY OF EVI COMPANY, INC. THEY ARE PROPRIETARY AND ARE FOR THE EXCLUSIVE USE OF THE PURCHASER. NO PARTS OR DATA TO A THIRD PARTY IS PROHIBITED.

REVISION 1	NS - 09/24/20
REVISION 2	NS - 11/02/20
REVISION 3	NS - 12/01/20
REVISION 4	NS - 05/24/21
REVISION 5	NS - 05/24/21
REVISION 6	NS - 02/25/20