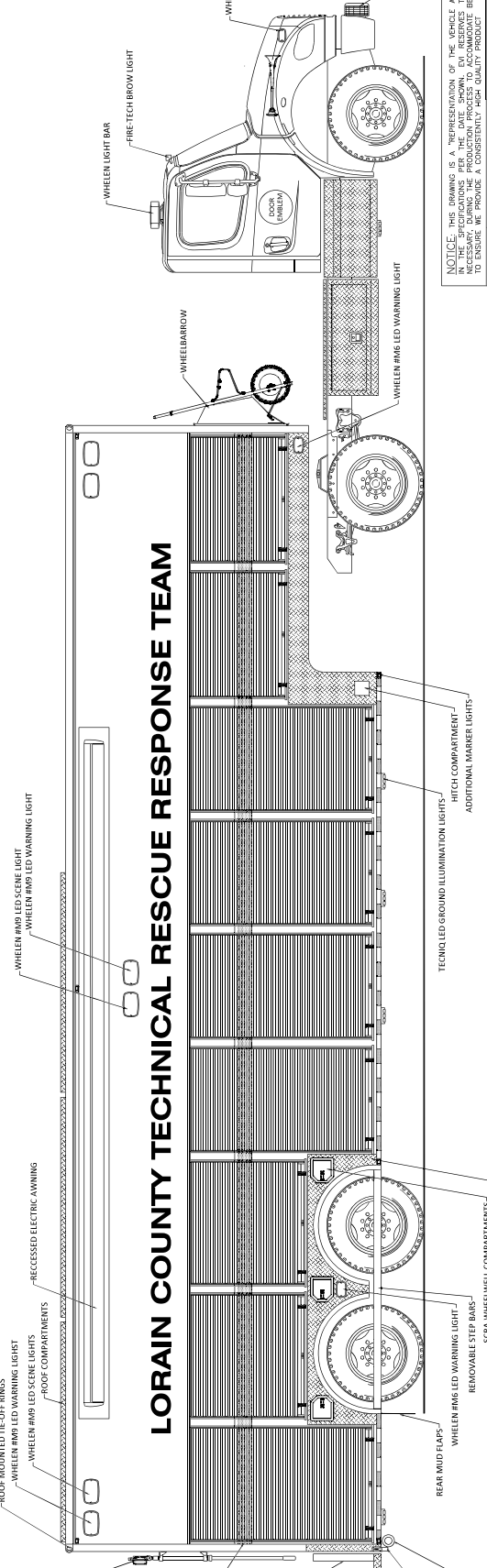
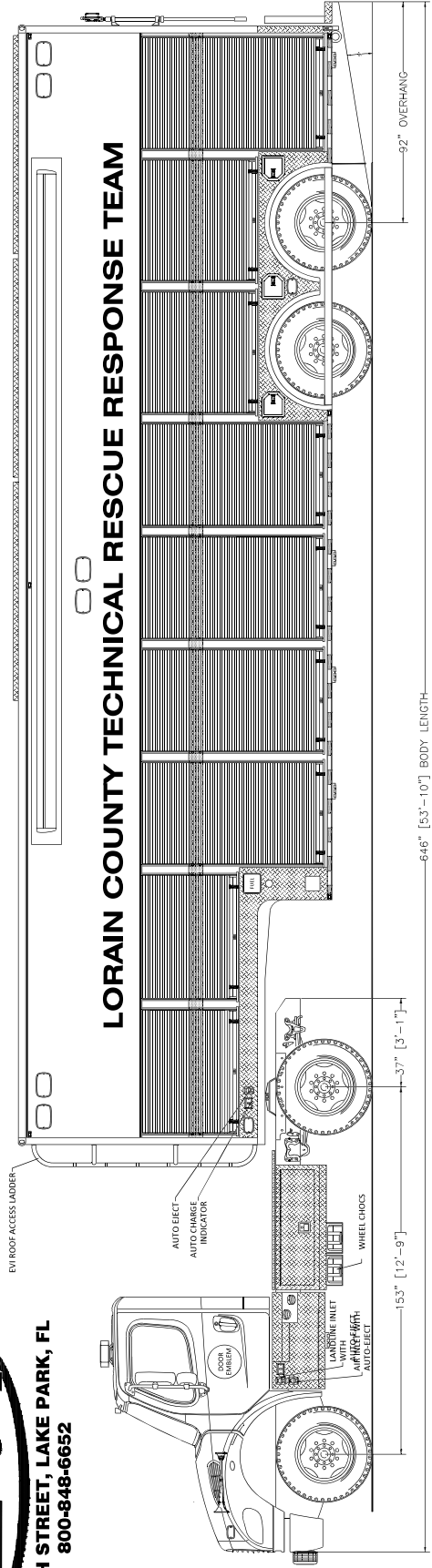


Lorain County
Ohio



705 13TH STREET, LAKE PARK, FL
800-848-6652



NOTICE: THIS DRAWING IS A REPRESENTATION OF THE VEHICLE AND/OR COMPONENTS AS DISCUSSED NECESSARY DURING THE PRODUCTION PROCESS TO ACCOMMODATE BEST MANUFACTURING PRACTICES AND TO ENSURE WE PROVIDE A CONSISTENTLY HIGH QUALITY PRODUCT

REVISION	DATE	DESCRIPTION
1	11/29/22	THESE DESIGN/ENGINEERING CHANGES ARE NECESSARY FOR THE EXCLUSIVE USE OF EMERGENCY VEHICLES, INC.
2	12/19/22	THESE DESIGN/ENGINEERING CHANGES ARE NECESSARY FOR THE EXCLUSIVE USE OF EMERGENCY VEHICLES, INC.
3	12/21/22	THESE DESIGN/ENGINEERING CHANGES ARE NECESSARY FOR THE EXCLUSIVE USE OF EMERGENCY VEHICLES, INC.
4	12/21/22	THESE DESIGN/ENGINEERING CHANGES ARE NECESSARY FOR THE EXCLUSIVE USE OF EMERGENCY VEHICLES, INC.
5	12/21/22	THESE DESIGN/ENGINEERING CHANGES ARE NECESSARY FOR THE EXCLUSIVE USE OF EMERGENCY VEHICLES, INC.
6	12/21/22	THESE DESIGN/ENGINEERING CHANGES ARE NECESSARY FOR THE EXCLUSIVE USE OF EMERGENCY VEHICLES, INC.

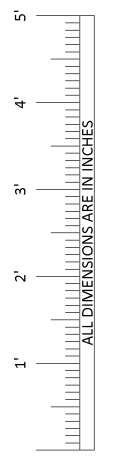
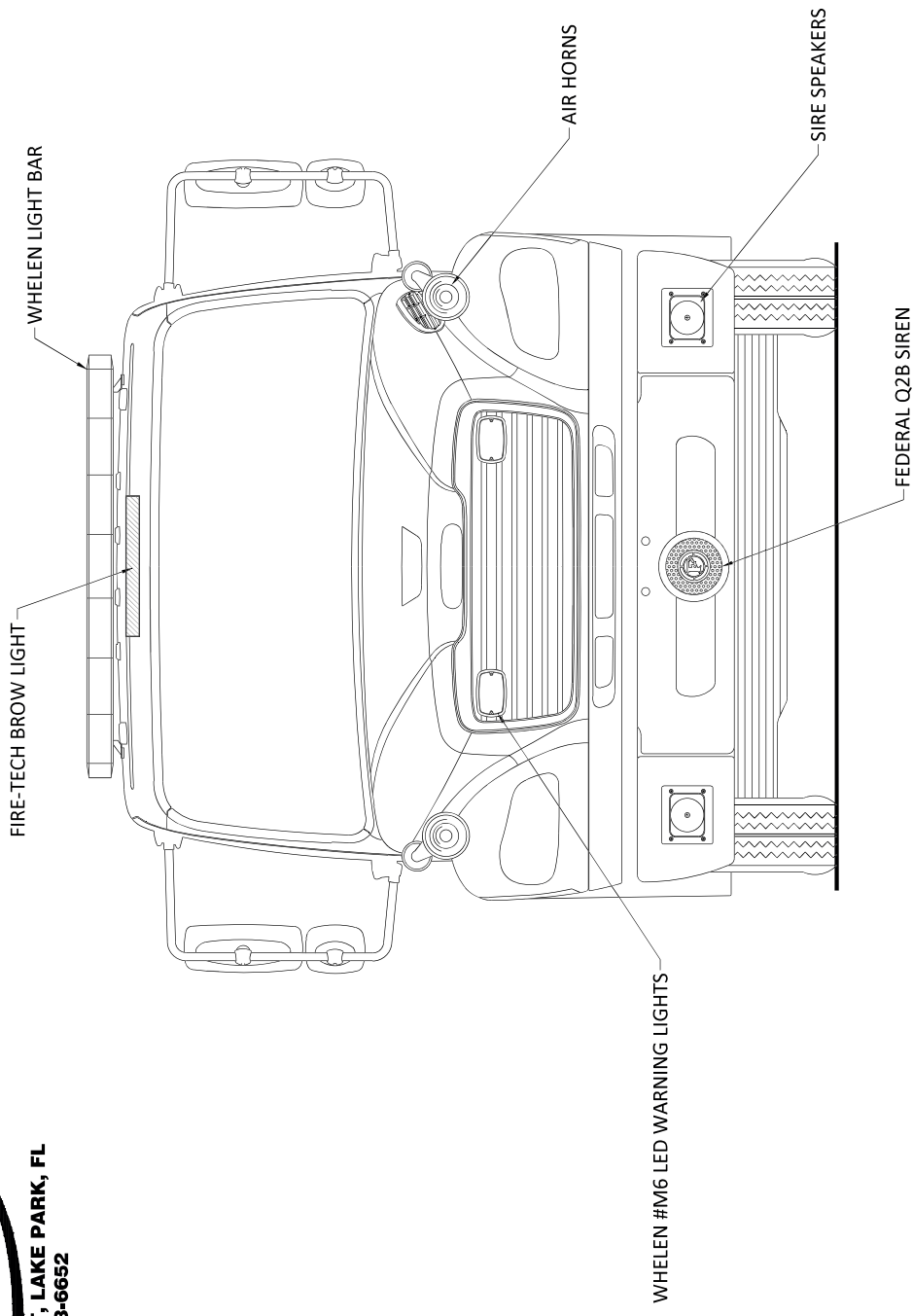
DATE: 02/21/23

Streetside / Curbside Overall

NOTICE: THIS DRAWING IS A REPRESENTATION OF THE VEHICLE AND/OR COMPONENTS AS DESCRIBED NECESSARY DURING THE PRODUCTION PROCESS TO ACCOMMODATE BEST MANUFACTURING PROCESSES AND TO ENSURE WE PROVIDE A CONSISTENTLY HIGH QUALITY PRODUCT

Lorain County
Ohio

EVI
705 13TH STREET, LAKE PARK, FL
800-848-6652



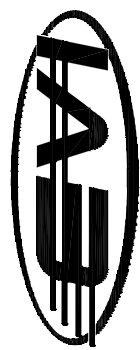
Tractor Front View

NOTICE: THIS DRAWING IS A REPRESENTATION OF THE VEHICLE AND/OR COMPONENTS AS DESCRIBED NECESSARY DURING THE PRODUCTION PROCESS TO ACCOMMODATE BEST MANUFACTURING PROCESSES AND TO ENSURE WE PROVIDE A CONSISTENTLY HIGH QUALITY PRODUCT

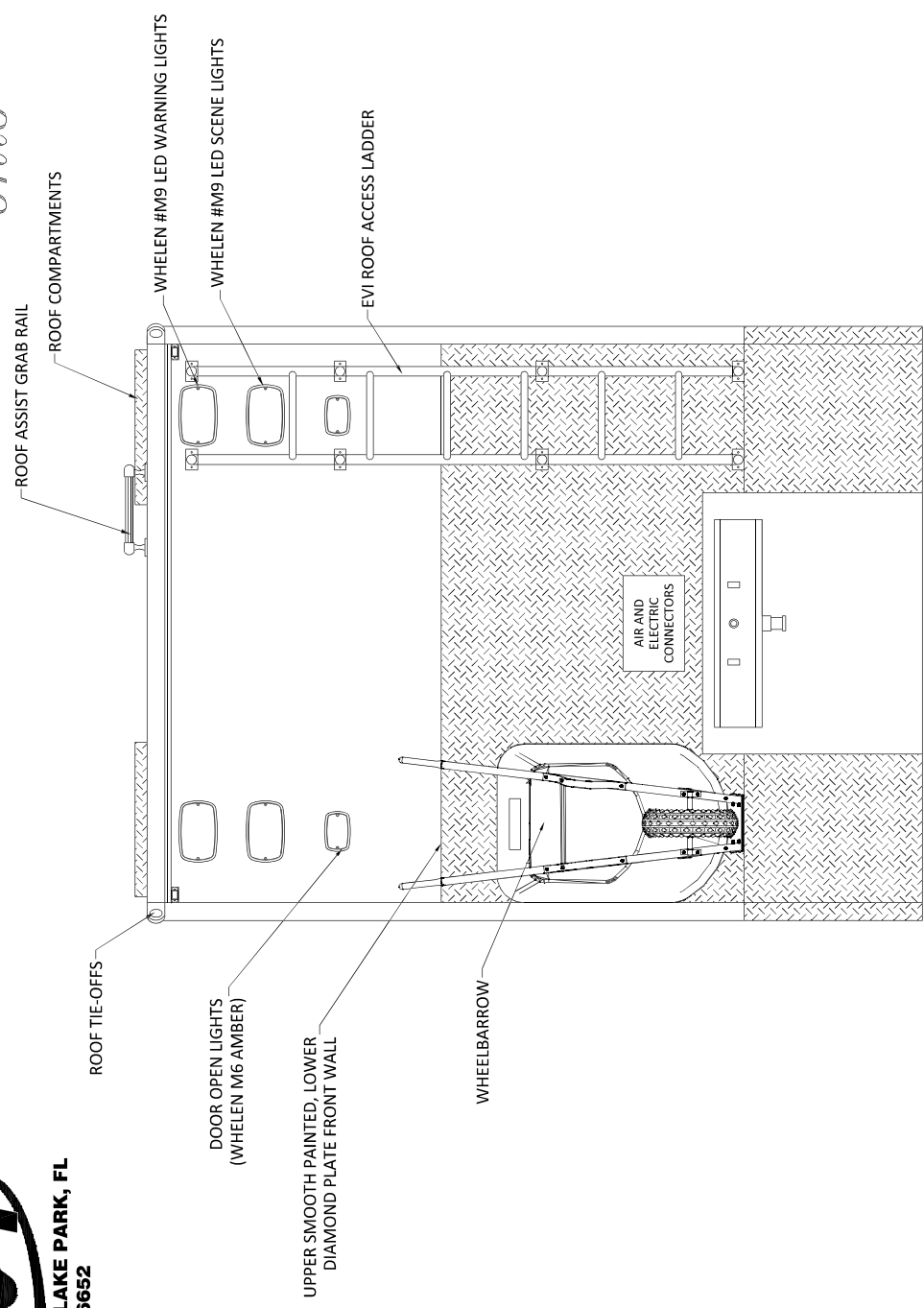
REVISION	NO.	DATE	DESCRIPTION
1	1	11/29/23	INITIAL DESIGN/ENGINEERING
2	2	12/19/23	REVISED FOR MANUFACTURING
3	3	12/19/23	REVISED FOR EMERGENCY VEHICLES, INC.
4	4	02/21/23PR	REVISED FOR THE EXCLUSIVE USE OF POLICE AND EMERGENCY SERVICES ONLY
5	5	02/21/23PR	REVISED FOR THE EXCLUSIVE USE OF POLICE AND EMERGENCY SERVICES ONLY
6	6	02/21/23	REVISED FOR THE EXCLUSIVE USE OF POLICE AND EMERGENCY SERVICES ONLY

DATE: 02/21/23

Lorain County Ohio



705 13TH STREET, LAKE PARK, FL
800-848-6652



Front View

NOTICE: THIS DRAWING IS A REPRESENTATION OF THE VEHICLE AND/OR COMPONENTS AS DESCRIBED AND IS NOT TO BE USED FOR CONSTRUCTION OF THE VEHICLE OR COMPONENTS UNLESS NECESSARY DURING THE PRODUCTION PROCESS TO ACCOMMODATE BEST MANUFACTURING PRACTICES AND TO ENSURE WE PROVIDE A CONSISTENTLY HIGH QUALITY PRODUCT

REVISION 1	NS - 11/29/22	THESE DESIGN/ENGINEERING
REVISION 2	NS - 12/19/22	CHANGES TO THE DESIGN
REVISION 3	NS - 12/19/22	OF EMERGENCY VEHICLES, INC.
REVISION 4	NS - 02/21/23	AND THE MANUFACTURING PRACTICES
REVISION 5	NS - 02/21/23	ARE FOR THE EXCLUSIVE USE
REVISION 6	-	OF EMERGENCY VEHICLES, INC. ANY
		REVISIONS WILL BE RECORDED IN THE
		VEHICLE DATA FILE. ANY
		THIRD PARTY IS PROHIBITED.

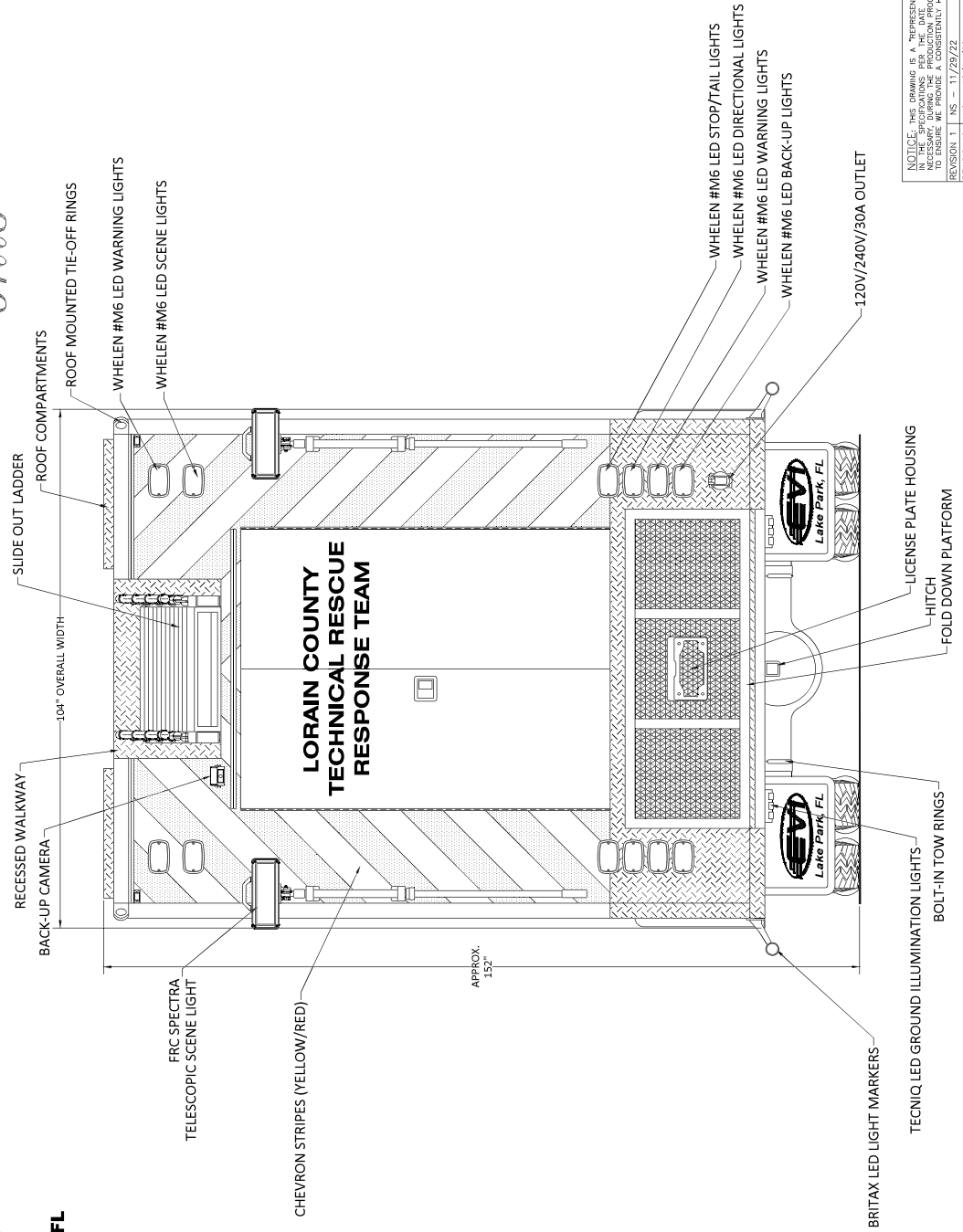
DATE: 02/21/23

PRODDWG_3149_LORAIN_COUNTY_OH_3149_38NWI_08232022

Lorain County Ohio



705 13TH STREET, LAKE PARK, FL
800-848-6652



Rear View

NOTICE: THIS DRAWING IS A REPRESENTATION OF THE VEHICLE AND/OR COMPONENTS AS DESCRIBED AND IS NOT TO BE USED FOR CONSTRUCTION OR REPAIR WORK WITHOUT THE NECESSARY PERMISSIONS FROM THE MANUFACTURER. THE MANUFACTURER SHALL BE RESPONSIBLE FOR THE DESIGN AND CONSTRUCTION OF THE VEHICLE AND/OR COMPONENTS TO ENSURE WE PROVIDE A CONSISTENTLY HIGH QUALITY PRODUCT.

REVISION	NO.	DATE	DESCRIPTION
1	NS	11/29/22	INITIAL DESIGN/ENGINEERING
2	NS	12/15/22	REVISED FOR MANUFACTURING
3	NS	12/19/22	REVISED FOR MANUFACTURING
4	NS	02/21/23PR	REVISED FOR THE EXCLUSIVE USE OF FOUR ENTITIES ANY OTHER USE IS PROHIBITED.
5	NS	02/21/23PR	REVISED FOR THE EXCLUSIVE USE OF FOUR ENTITIES ANY OTHER USE IS PROHIBITED.
6	NS	02/21/23	REVISED FOR THE EXCLUSIVE USE OF FOUR ENTITIES ANY OTHER USE IS PROHIBITED.