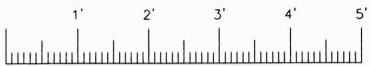
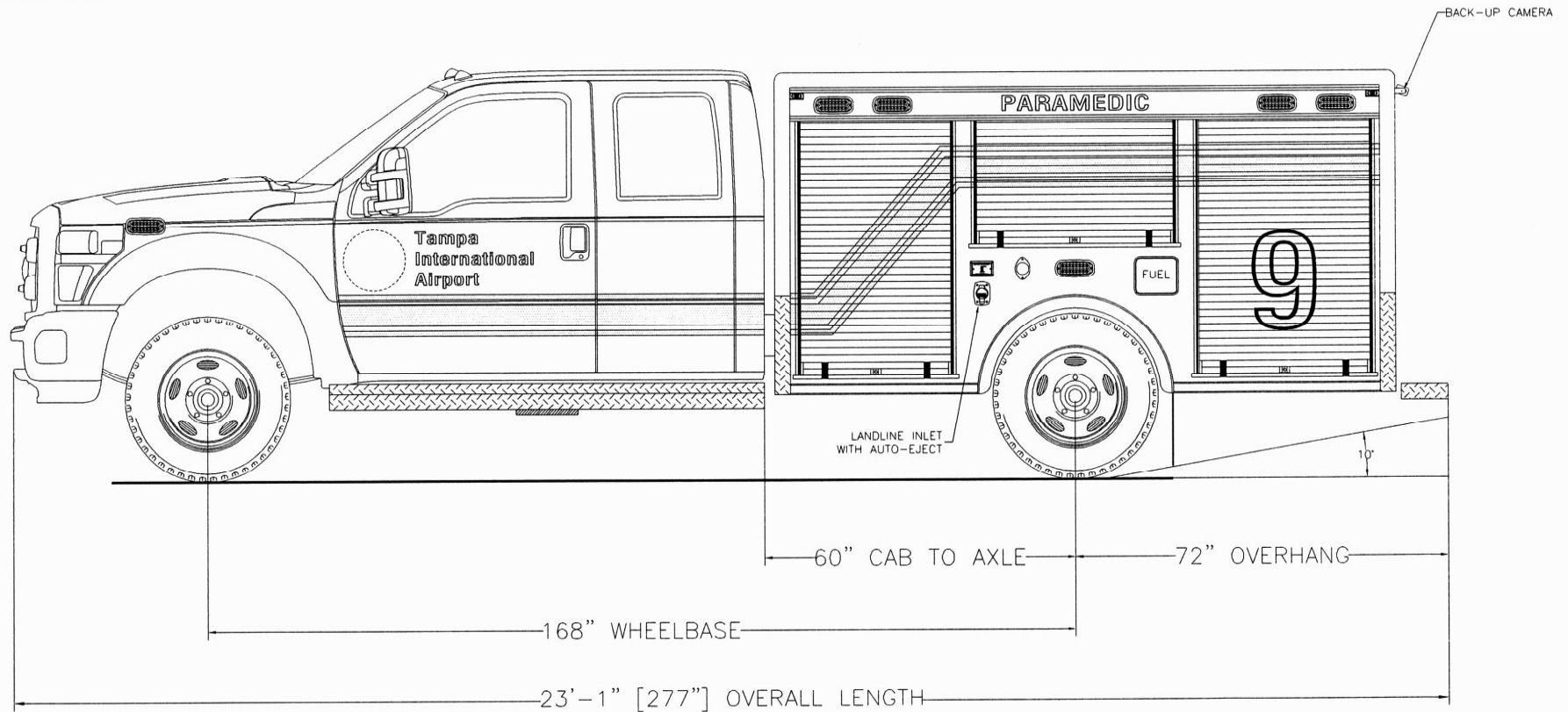




705 13TH STREET, LAKE PARK, FL  
800-848-6652

# Hillsborough County Aviation Authority Tampa, Florida



## Streetside Overall

THESE DESIGN/ENGINEERING DRAWING(S) ARE THE PROPERTY OF EMERGENCY VEHICLES, INC. THEY ARE PROPRIETARY, AND ARE FOR THE EXCLUSIVE USE OF YOUR ENTITY. ANY DIVULGING OF THIS DATA TO A THIRD PARTY IS PROHIBITED.

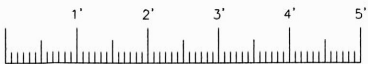
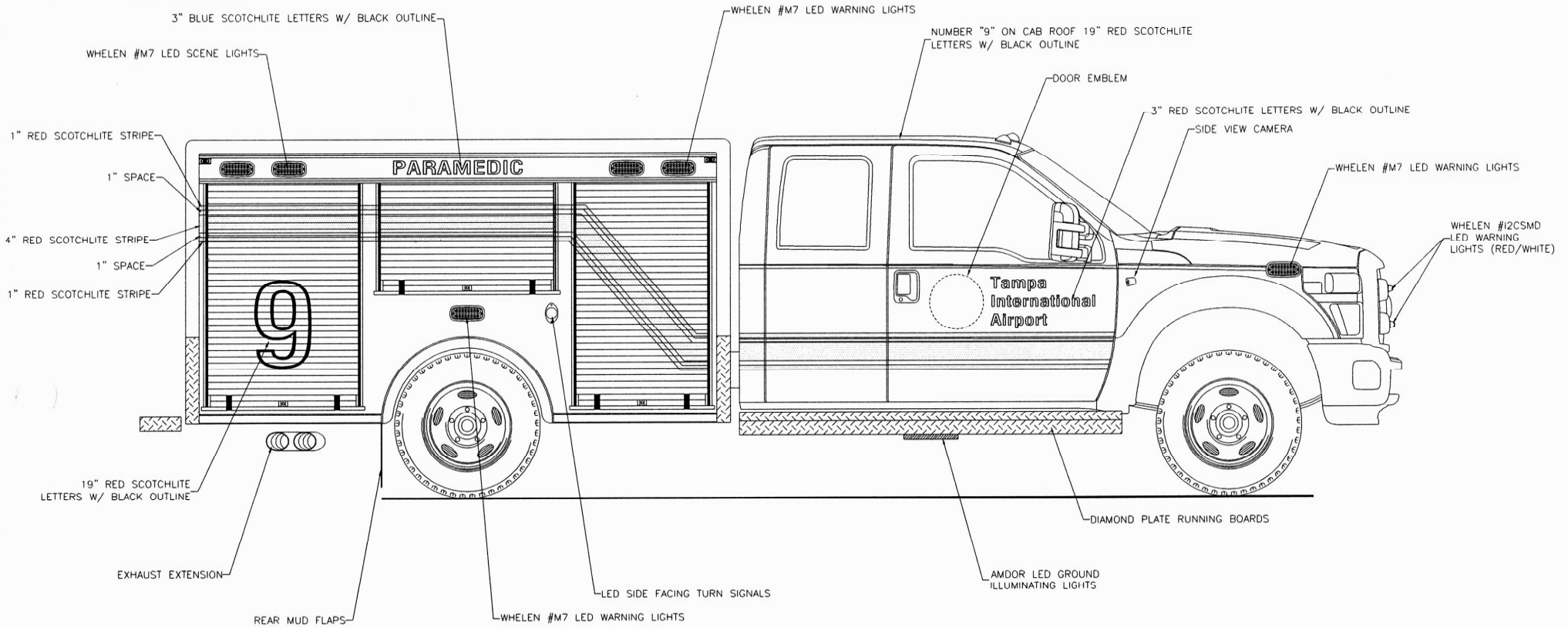
*E. P. [Signature]* DATE: 08/19/15

REVISION 1	NS - 01/12/17
REVISION 2	-
REVISION 3	-
REVISION 4	-
REVISION 5	-



705 13TH STREET, LAKE PARK, FL  
800-848-6652

# Hillsborough County Aviation Authority Tampa, Florida



Curbside Overall

THESE DESIGN/ENGINEERING DRAWING(S) ARE THE PROPERTY OF EMERGENCY VEHICLES, INC. THEY ARE PROPRIETARY, AND ARE FOR THE EXCLUSIVE USE OF YOUR ENTITY. ANY DIVULGING OF THIS DATA TO A THIRD PARTY IS PROHIBITED.

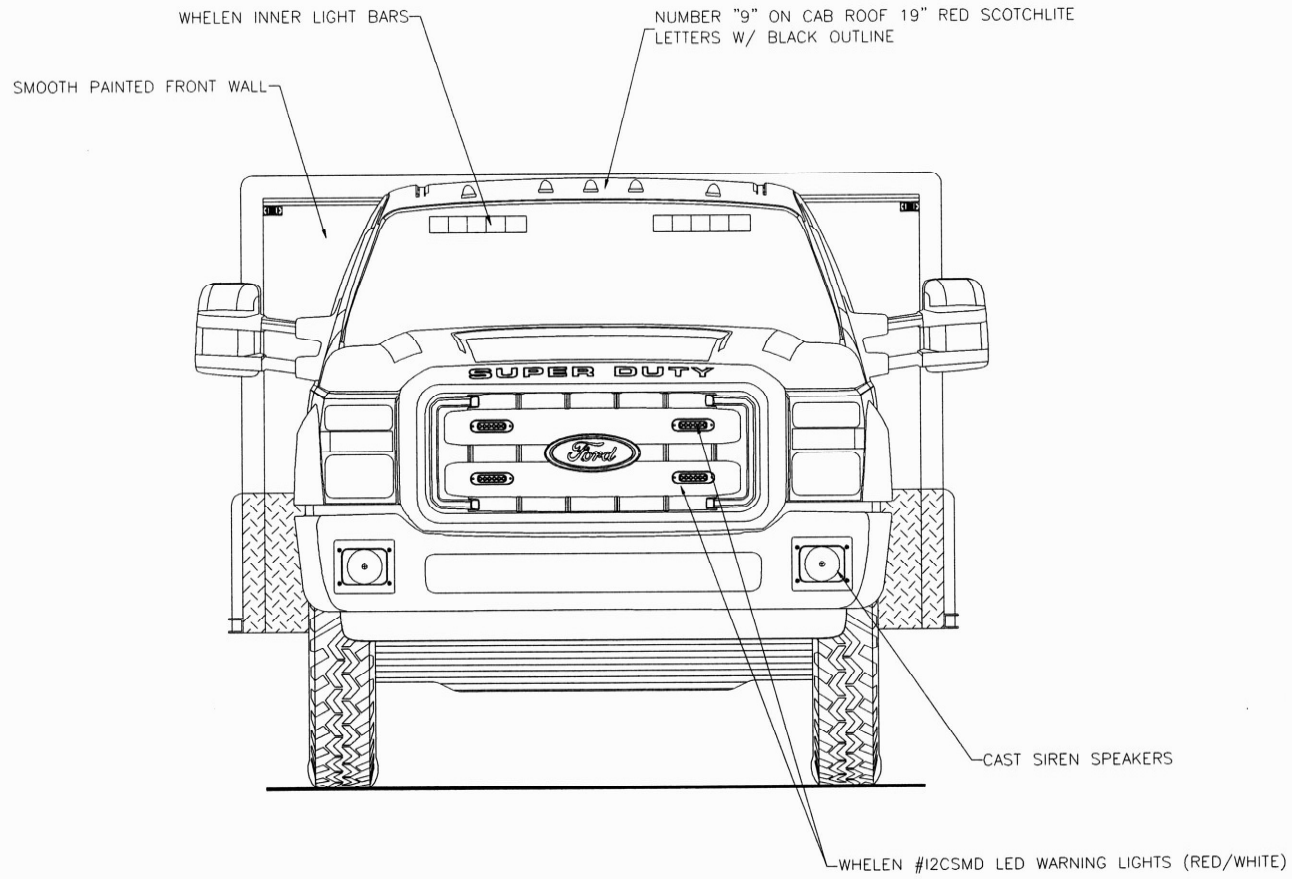
*E. P. ...* DATE: 08/19/15

REVISION 1	NS - 01/12/17
REVISION 2	-
REVISION 3	-
REVISION 4	-
REVISION 5	-



705 13TH STREET, LAKE PARK, FL  
800-848-6652

# Hillsborough County Aviation Authority Tampa, Florida



Front View

THESE DESIGN/ENGINEERING DRAWING(S) ARE THE PROPERTY OF EMERGENCY VEHICLES, INC. THEY ARE PROPRIETARY, AND ARE FOR THE EXCLUSIVE USE OF YOUR ENTITY. ANY DIVULGING OF THIS DATA TO A THIRD PARTY IS PROHIBITED.

*E. Spencer* DATE: 08/19/15

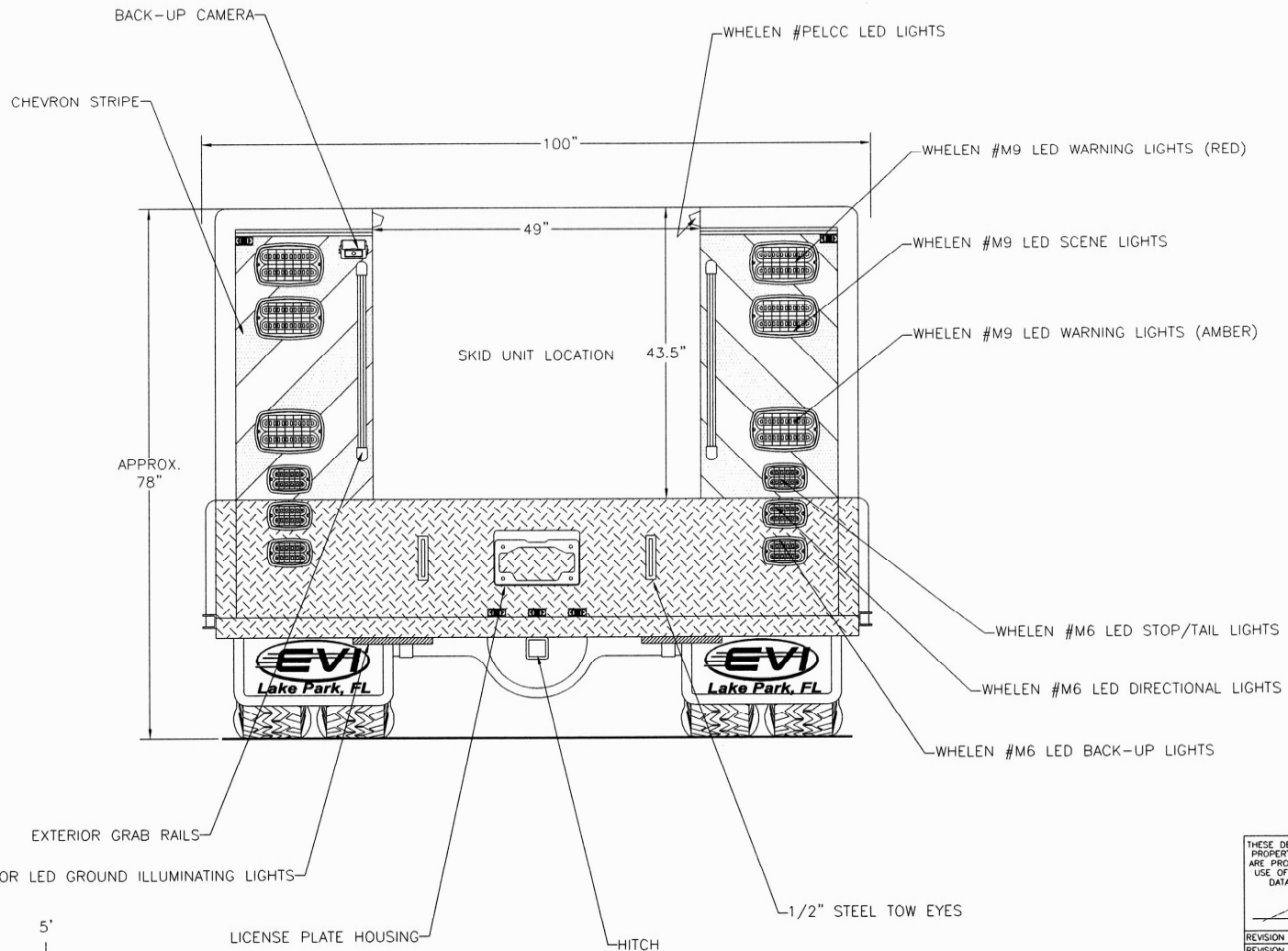
REVISION 1	NS - 01/12/17
REVISION 2	-
REVISION 3	-
REVISION 4	-
REVISION 5	-



705 13TH STREET, LAKE PARK, FL  
800-848-6652

# Hillsborough County Aviation Authority Tampa, Florida

MAX.  
HEIGHT  
78"



Rear View

THESE DESIGN/ENGINEERING DRAWING(S) ARE THE PROPERTY OF EMERGENCY VEHICLES, INC. THEY ARE PROPRIETARY AND ARE FOR THE EXCLUSIVE USE OF YOUR ENTITY. ANY DISSEMINATION OF THIS DATA TO A THIRD PARTY IS PROHIBITED.

*E. J. [Signature]* DATE: 08/19/15

REVISION 1	NS - 01/12/17
REVISION 2	-
REVISION 3	-
REVISION 4	-
REVISION 5	-