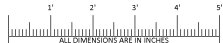
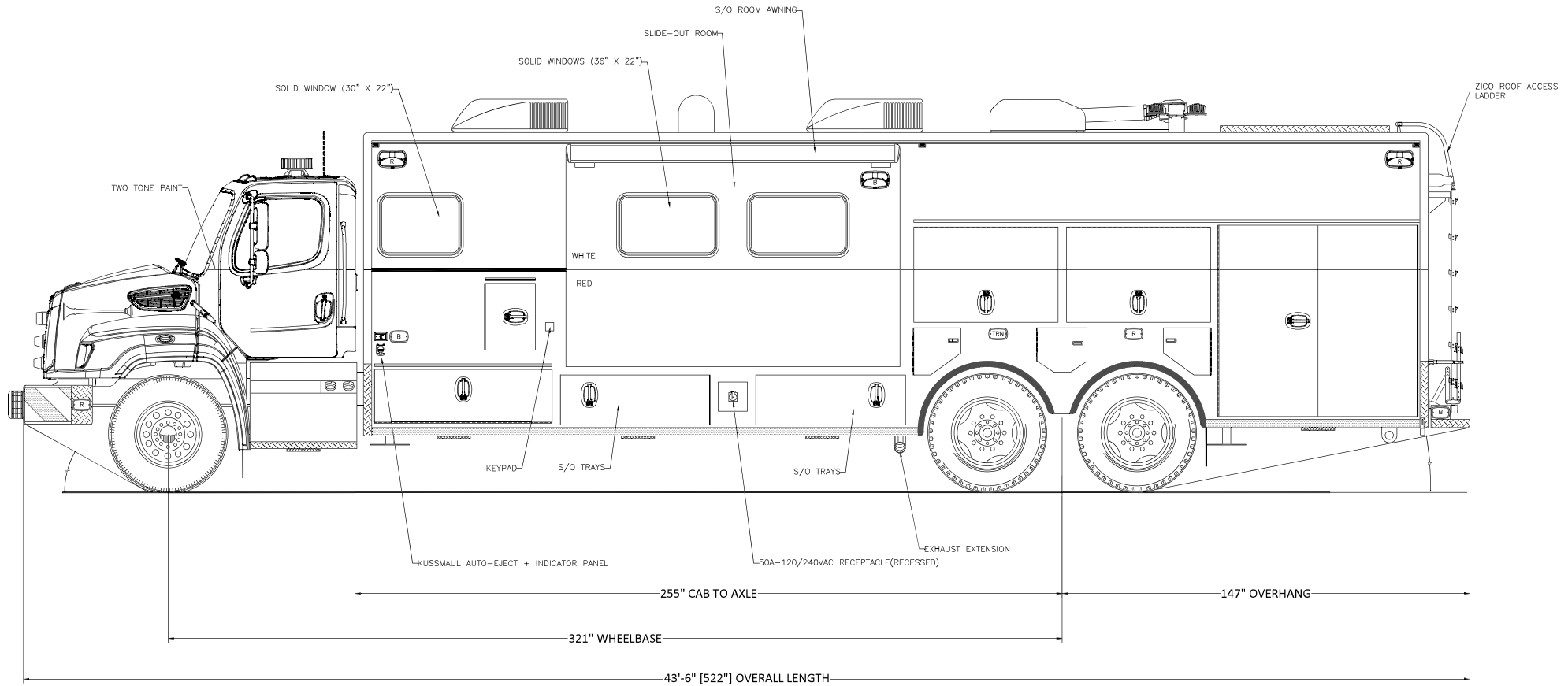


REVISED
03-31-23

27	30	33	35
43	58		

City of Ottawa
Ottawa, Canada



Streetside Overall

PRODUCTION

NOTICE: THIS DRAWING IS A REPRESENTATION OF THE VEHICLE AND/OR COMPONENTS AS DESCRIBED IN THE SPECIFICATIONS FOR THE DATE SHOWN. EIR RESERVES THE RIGHT TO MAKE CHANGES, AS NECESSARY, DURING THE PRODUCTION PROCESS TO ACCOMMODATE BEST MANUFACTURING PROCESSES AND TO ENSURE WE PROVIDE A CONSISTENTLY HIGH QUALITY PRODUCT

REVISION 1	JPG - 10/22/21
REVISION 2	JPG - 11/30/21
REVISION 3	NS - 12/17/21 - REV
REVISION 4	NS - 01/17/22
REVISION 5	NS - 03/31/23 CO.4.5
REVISION 6	

THESE DESIGN/ENGINEERING DRAWING(S) ARE THE PROPERTY OF EMERGENCY VEHICLES, INC. THEY ARE PROPRIETARY AND ARE FOR THE EXCLUSIVE USE OF YOUR ENTITY. ANY DIVULGING OF THIS DATA TO A THIRD PARTY IS PROHIBITED

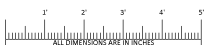
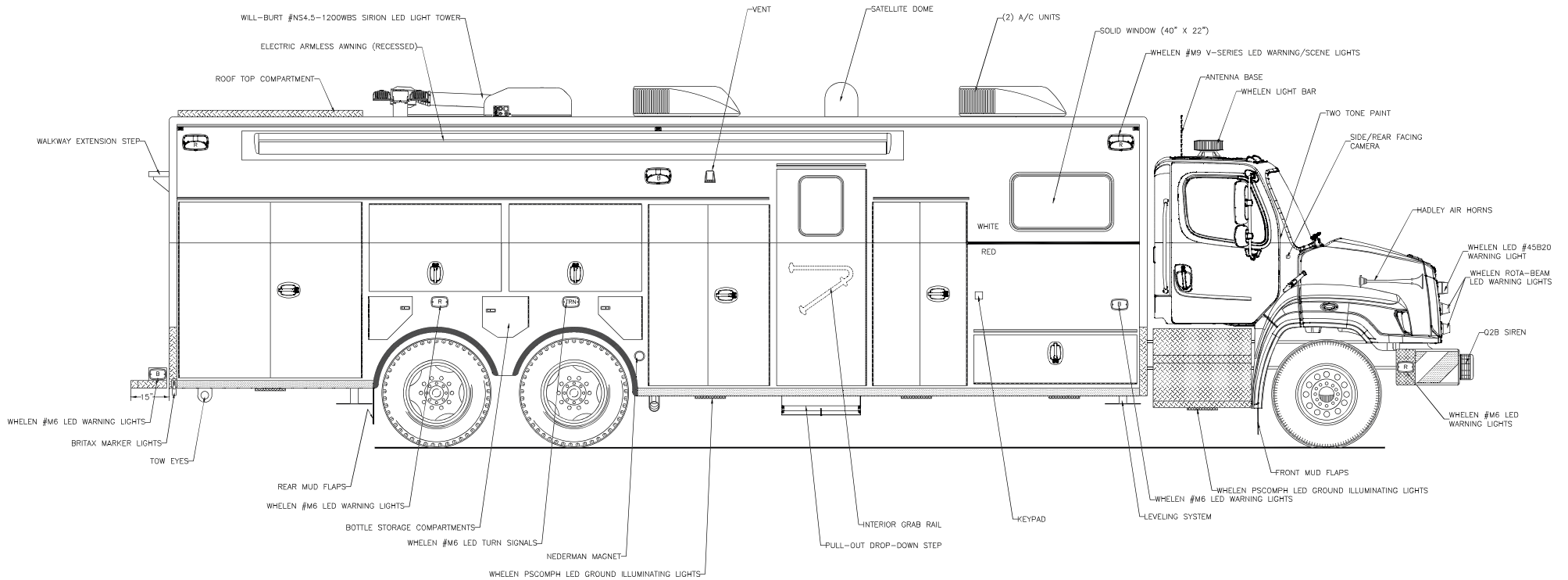
DATE: 10/05/20

REVISED
03-31-23

5	14	27	30
33	43		

City of Ottawa
Ottawa, Canada

REVISED
03-31-23



Curbside Overall

PRODUCTION

NOTICE: THIS DRAWING IS A REPRESENTATION OF THE VEHICLE AND/OR COMPONENTS AS DESCRIBED IN THE SPECIFICATIONS FOR THE DATE SHOWN. EA RESERVES THE RIGHT TO MAKE CHANGES, AS NECESSARY, DURING THE PRODUCTION PROCESS TO ACCOMMODATE BEST MANUFACTURING PRACTICES AND TO ENSURE WE PROVIDE A CONSISTENTLY HIGH QUALITY PRODUCT

REVISION 1	JFG - 11/30/21
REVISION 2	NS - 12/17/21 - REV
REVISION 3	NS - 01/17/22
REVISION 4	NS - 03/03/22
REVISION 5	NS - 03/31/23 CO.4.5
REVISION 6	

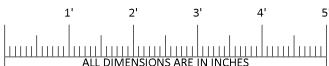
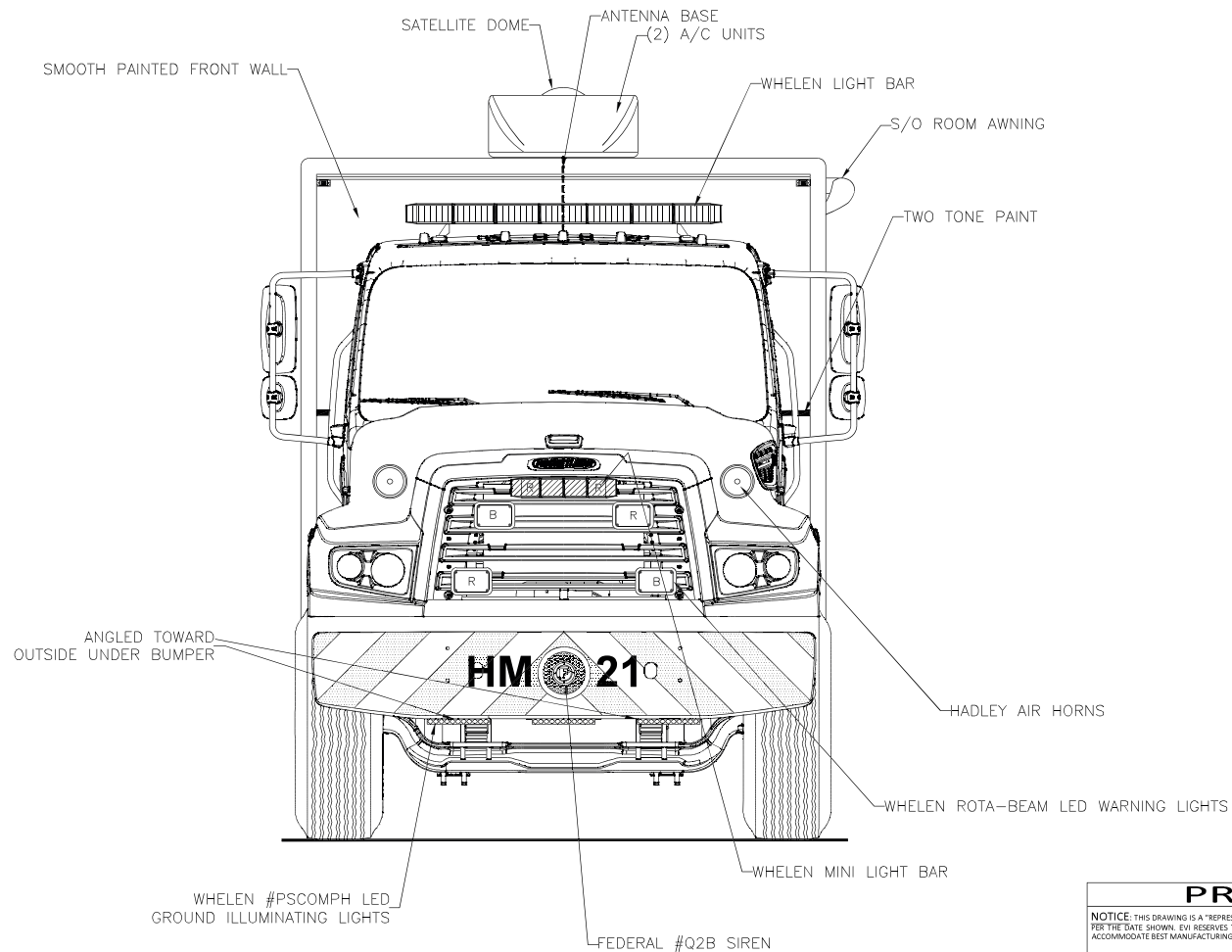
THESE DESIGN/ENGINEERING DRAWINGS ARE THE PROPERTY OF EMERGENCY VEHICLES, INC. THEY ARE PROPRIETARY AND ARE FOR THE EXCLUSIVE USE OF YOUR ENTITY. ANY DIVULGING OF THIS DATA TO A THIRD PARTY IS PROHIBITED

DATE: 10/05/20

REVISED
03-31-23

33 14

City of Ottawa
Ottawa, Canada



Front View

PRODUCTION

NOTICE: THIS DRAWING IS A REPRESENTATION OF THE VEHICLE AND/OR COMPONENTS AS DESCRIBED IN THE SPECIFICATIONS FOR THE DATE SHOWN. EWI RESERVES THE RIGHT TO MAKE CHANGES, AS NECESSARY, DURING THE PRODUCTION PROCESS TO ACCOMMODATE BEST MANUFACTURING PROCESSES AND TO ENSURE WE PROVIDE A CONSISTENTLY HIGH QUALITY PRODUCT.

REVISION 1	JPG - 10/15/21
REVISION 2	JPG - 11/30/21
REVISION 3	NS - 12/17/21 - REV
REVISION 4	NS - 01/17/22
REVISION 5	NS - 03/31/23 CO.4.5
REVISION 6	

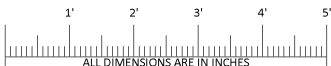
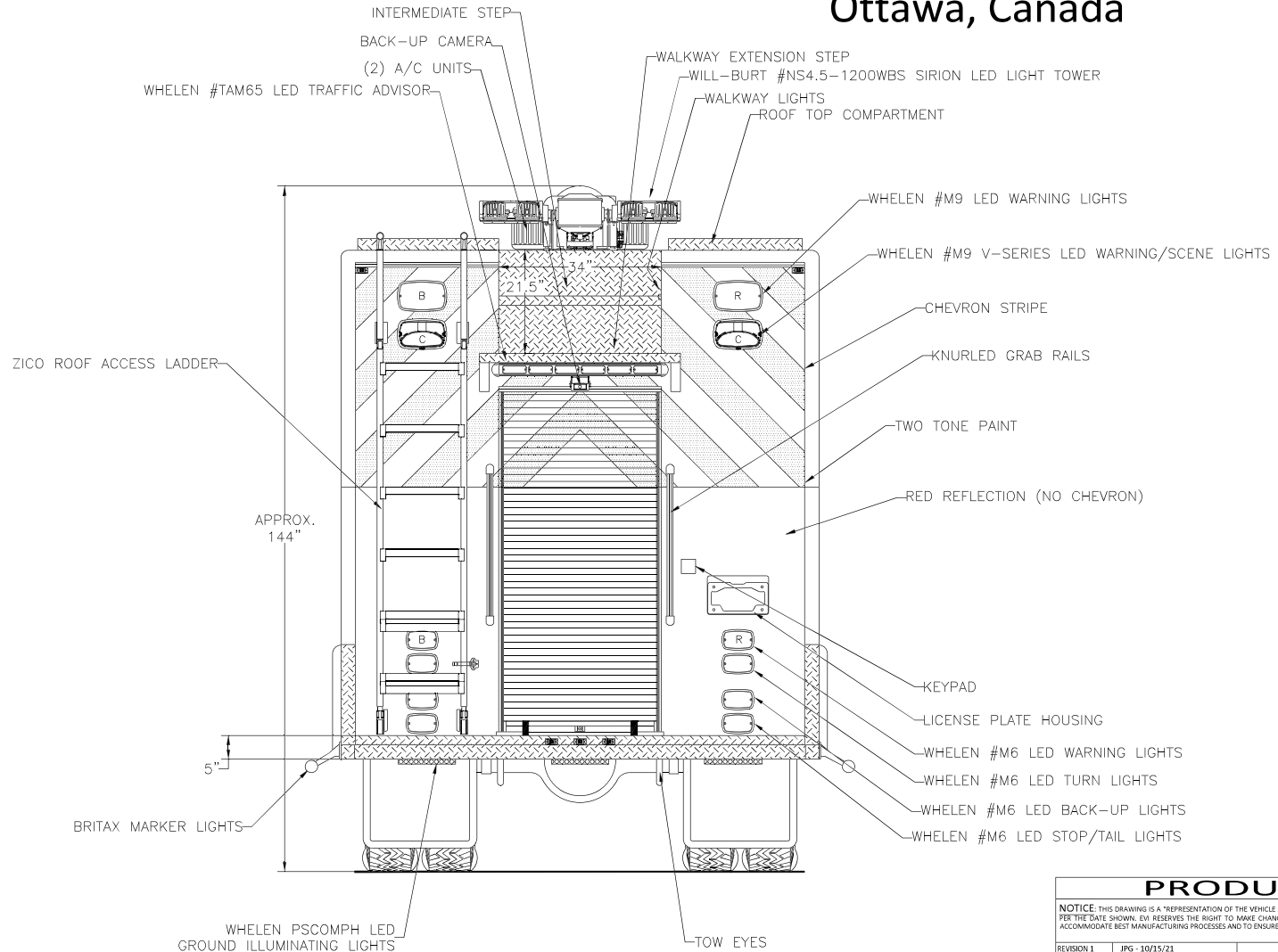
THESE DESIGN/ENGINEERING DRAWINGS ARE THE PROPERTY OF EMERGENCY VEHICLES, INC. THEY ARE PROPRIETARY AND ARE FOR THE EXCLUSIVE USE OF YOUR ENTITY. ANY DIVULGING OF THIS DATA TO A THIRD PARTY IS PROHIBITED.

DATE: 10/05/20

REVISED
03-31-23

9 26 30 35

City of Ottawa
Ottawa, Canada



Rear View

PRODUCTION

NOTICE: THIS DRAWING IS A REPRESENTATION OF THE VEHICLE AND/OR COMPONENTS AS DESCRIBED IN THE SPECIFICATIONS FOR THE DATE SHOWN. EIR RESERVES THE RIGHT TO MAKE CHANGES, AS NECESSARY, DURING THE PRODUCTION PROCESS TO ACCOMMODATE BEST MANUFACTURING PROCESSES AND TO ENSURE WE PROVIDE A CONSISTENTLY HIGH QUALITY PRODUCT.

REVISION 1	JPG - 10/15/21
REVISION 2	JPG - 11/30/21
REVISION 3	NS - 12/17/21 - REV
REVISION 4	NS - 01/17/22
REVISION 5	NS - 03/31/23 CO.4.5
REVISION 6	

THESE DESIGN/ENGINEERING DRAWING(S) ARE THE PROPERTY OF EMERGENCY VEHICLES, INC. THEY ARE PROPRIETARY AND ARE FOR THE EXCLUSIVE USE OF YOUR ENTITY. ANY DIVULGING OF THIS DATA TO A THIRD PARTY IS PROHIBITED.

DATE: 10/05/20