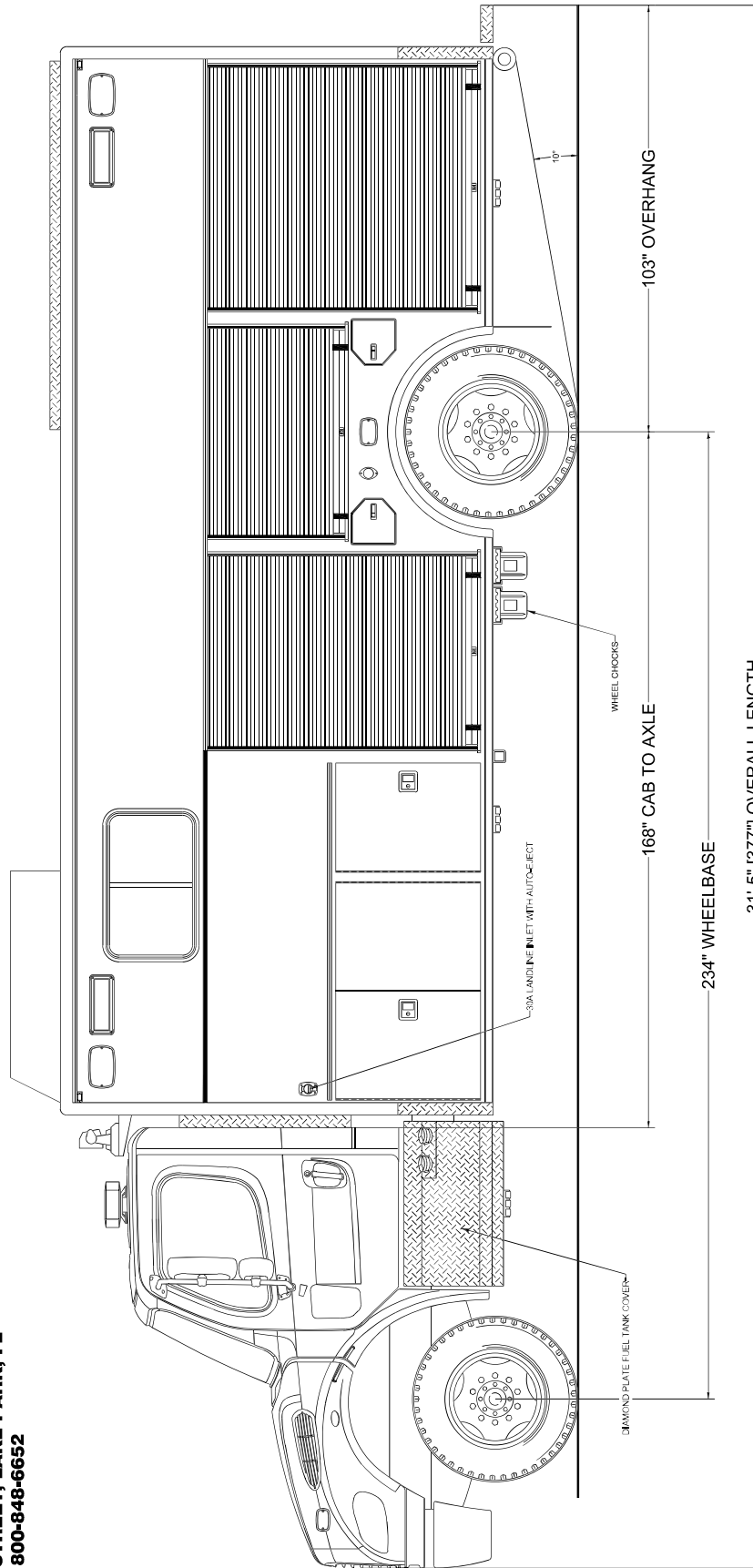


Limerick Fire Department Limerick, PA



705 13TH STREET, LAKE PARK, FL
800-848-6652

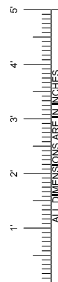


NOTICE

THIS DRAWING IS A REPRESENTATION OF THE VEHICLE AND/OR COMPONENTS AS DESCRIBED IN THE SPECIFICATIONS PER THE DATE SHOWN. EVI RESERVES THE RIGHT TO MAKE CHANGES, AS NECESSARY, DURING THE PRODUCTION PROCESS TO ACCOMMODATE BEST MANUFACTURING PROCESSES AND TO ENSURE WE PROVIDE A CONSISTENTLY HIGH QUALITY PRODUCT.

PRODDWG\3103_LIMERICK_PA\3103-20CB\NS\060520
 REVISION 1 | IN - 06/05/20
 REVISION 2 | NS - 04/30/21
 REVISION 3 |
 REVISION 4 |
 REVISION 5 |
 REVISION 6 |

THIS DRAWING IS THE PROPERTY OF EVI. IT IS TO BE USED ONLY FOR THE PURPOSES OF THE VEHICLE AND/OR COMPONENTS AS DESCRIBED IN THE SPECIFICATIONS PER THE DATE SHOWN. EVI RESERVES THE RIGHT TO MAKE CHANGES, AS NECESSARY, DURING THE PRODUCTION PROCESS TO ACCOMMODATE BEST MANUFACTURING PROCESSES AND TO ENSURE WE PROVIDE A CONSISTENTLY HIGH QUALITY PRODUCT. THIS DRAWING IS THE PROPERTY OF EVI. IT IS TO BE USED ONLY FOR THE PURPOSES OF THE VEHICLE AND/OR COMPONENTS AS DESCRIBED IN THE SPECIFICATIONS PER THE DATE SHOWN. EVI RESERVES THE RIGHT TO MAKE CHANGES, AS NECESSARY, DURING THE PRODUCTION PROCESS TO ACCOMMODATE BEST MANUFACTURING PROCESSES AND TO ENSURE WE PROVIDE A CONSISTENTLY HIGH QUALITY PRODUCT.

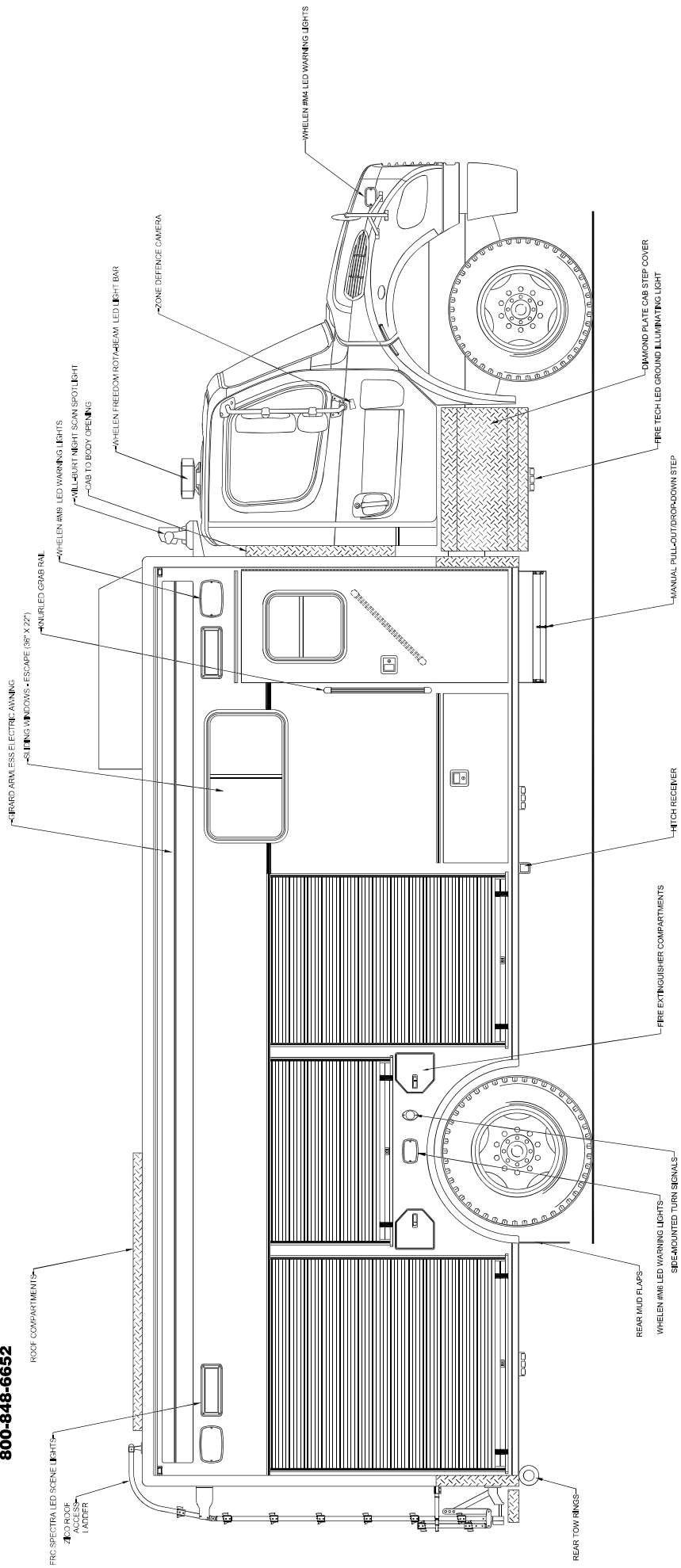


Streetside Overall

Limerick Fire Department Limerick, PA



705 13TH STREET, LAKE PARK, FL
800-848-6652



NOTICE
THIS DRAWING IS A REPRESENTATION OF THE VEHICLE AND/OR COMPONENTS AS DESCRIBED IN THE SPECIFICATIONS PER THE DATE SHOWN. ELM RESERVES THE RIGHT TO MAKE CHANGES, AS NECESSARY, DURING THE PRODUCTION PROCESS TO ACCOMMODATE BEST MANUFACTURING PROCESSES AND TO ENSURE WE PROVIDE A CONSISTENTLY HIGH QUALITY PRODUCT.

PRODDWG\3103_LIMERICK_PA\3103-20CB\NS\060520
 REVISION 1 RN - 09/09/20
 REVISION 2 NS - 04/30/21
 REVISION 3 - -
 REVISION 4 - -
 REVISION 5 - -
 REVISION 6 - -

PRODDWG\3103_LIMERICK_PA\3103-20CB\NS\060520
 THIS DRAWING IS THE PROPERTY OF ELMERSON VEHICLES, INC. IT IS NOT TO BE REPRODUCED OR USED IN ANY MANNER WITHOUT THE WRITTEN PERMISSION OF ELMERSON VEHICLES, INC. DATA TO A THIRD PARTY IS PROHIBITED.

DATE: 09/09/20



Curbside Overall

Limerick Fire Department Limerick, PA



705 13TH STREET, LAKE PARK, FL
800-848-6652

SMOOTH PAINTED FRONT WALL

WHELEN FREEDOM LED LIGHT BAR

ANTENNA BASES

WILL-BURT NIGHTSCAN SPOTLIGHT

CAB TO BODY
OPENING

CAST SIREN SPEAKER



WHELEN #M6 LED WARNING LIGHT

FEDERAL #Q2B MECHANICAL SIREN

HITCH RECEIVER

NOTICE

THIS DRAWING IS A REPRESENTATION OF THE VEHICLE AND/OR COMPONENTS AS DESCRIBED IN THE SPECIFICATIONS PER THE DATE SHOWN. EVI RESERVES THE RIGHT TO MAKE CHANGES, AS NECESSARY, DURING THE PRODUCTION PROCESS TO ACCOMMODATE BEST MANUFACTURING PROCESSES AND TO ENSURE WE PROVIDE A CONSISTENTLY HIGH QUALITY PRODUCT.

FOR YOUR PROTECTION, ALWAYS USE THE PROPERTY OF EMERGENCY VEHICLES, INC. THEY ARE PROPRIETARY AND ARE FOR THE EXCLUSIVE USE OF THE CUSTOMER. ANY REUSE OR DISTRIBUTION OF THIS DATA TO A THIRD PARTY IS PROHIBITED.

REVISION 1 - 09/05/20

REVISION 2 - 04/20/21

REVISION 3 -

REVISION 4 -

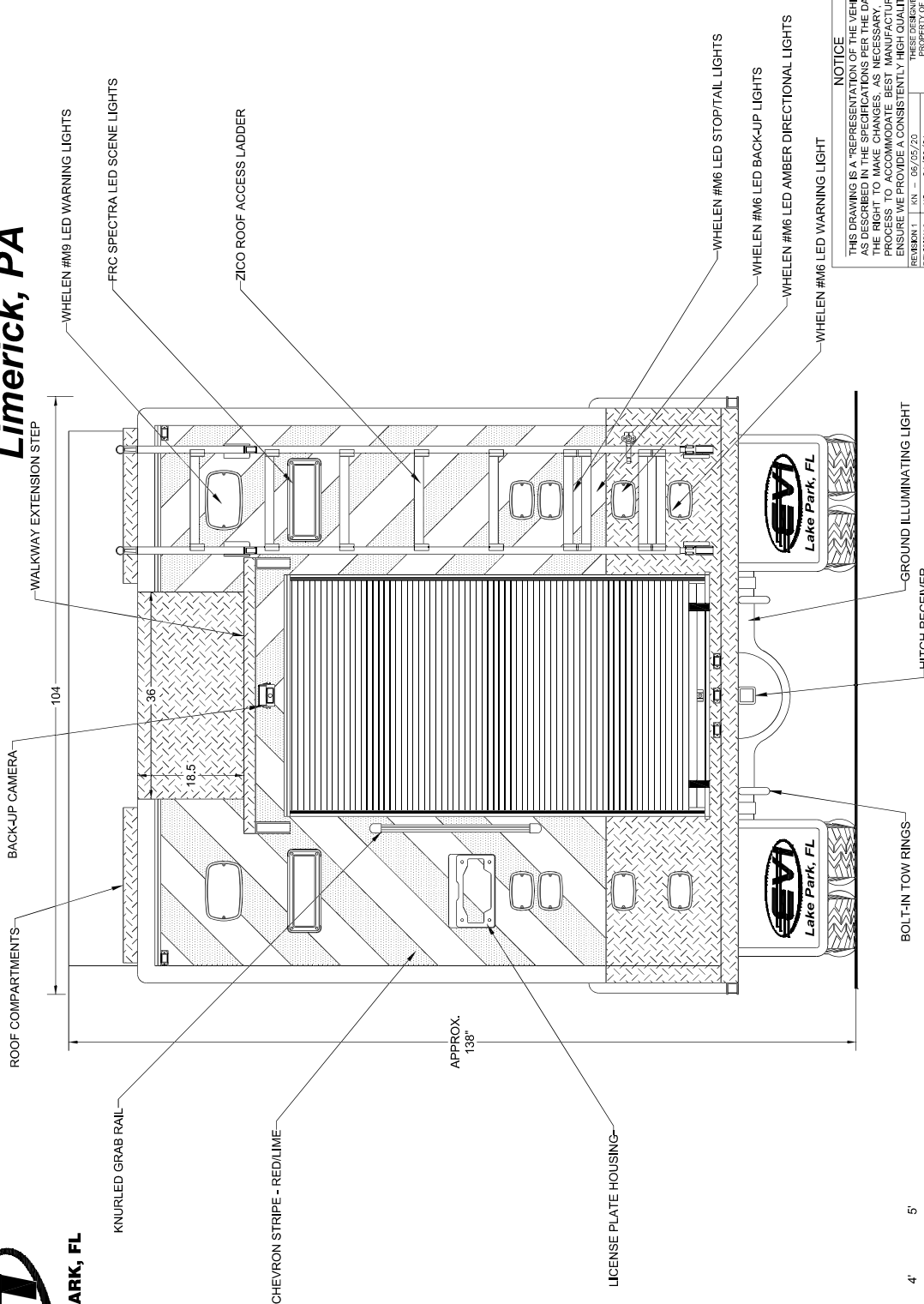
REVISION 5 -

REVISION 6 -

DATE: 09/05/20

Front View

Limerick Fire Department Limerick, PA

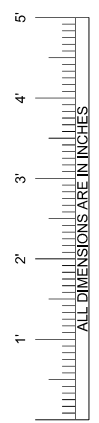


104

36

18.5

APPROX. 138"



NOTICE
THIS DRAWING IS A REPRESENTATION OF THE VEHICLE AND/OR COMPONENTS AS DESCRIBED IN THE SPECIFICATIONS PER THE DATE SHOWN. EVA RESERVES THE RIGHT TO MAKE CHANGES, AS NECESSARY, DURING THE PRODUCTION PROCESS TO ACCOMMODATE BEST MANUFACTURING PRACTICES AND TO ENSURE WE PROVIDE A CONSISTENTLY HIGH QUALITY PRODUCT. DRAWINGS ARE THE PROPERTY OF EMERGENCY VEHICLES, INC. THEY ARE PROPRIETARY AND ARE FOR THE EXCLUSIVE USE OF THE PURCHASER. THIS DATA IS A THIRD PARTY IS PROHIBITED.

REVISION 1	REV - 09/25/20
REVISION 2	NS - 04/20/21
REVISION 3	
REVISION 4	
REVISION 5	
REVISION 6	

DATE: 09/25/20

Rear View