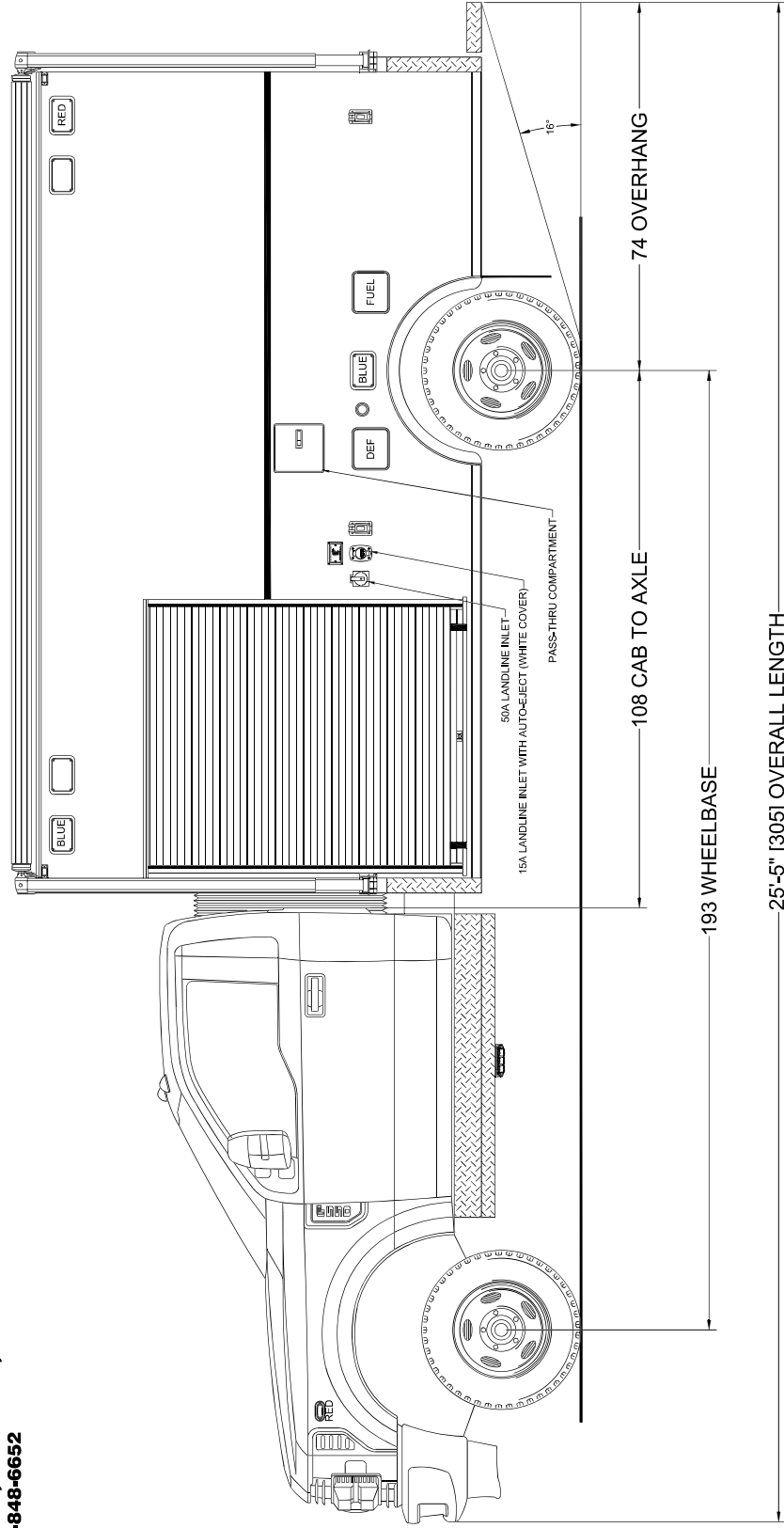


**Walnut Creek Police Dept.
Walnut Creek, California**



**705 13TH STREET, LAKE PARK, FL
800-848-6652**



NOTICE
THIS DRAWING IS A REPRESENTATION OF THE VEHICLE AND/OR COMPONENTS AS DESCRIBED IN THE SPECIFICATIONS PER THE DATE SHOWN. EVI RESERVES THE RIGHT TO MAKE CHANGES AS NECESSARY, DURING THE PRODUCTION PROCESS TO ACCOMMODATE BEST MANUFACTURING PROCESSES AND TO ENSURE WE PROVIDE A CONSISTENTLY HIGH QUALITY PRODUCT.
THIS DRAWING IS THE PROPERTY OF EVI. IT IS NOT TO BE REPRODUCED, COPIED, OR USED IN ANY MANNER WITHOUT THE WRITTEN PERMISSION OF EVI. ANY UNAUTHORIZED USE OF THIS DRAWING IS PROHIBITED.
DATE: 10/28/21

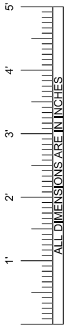
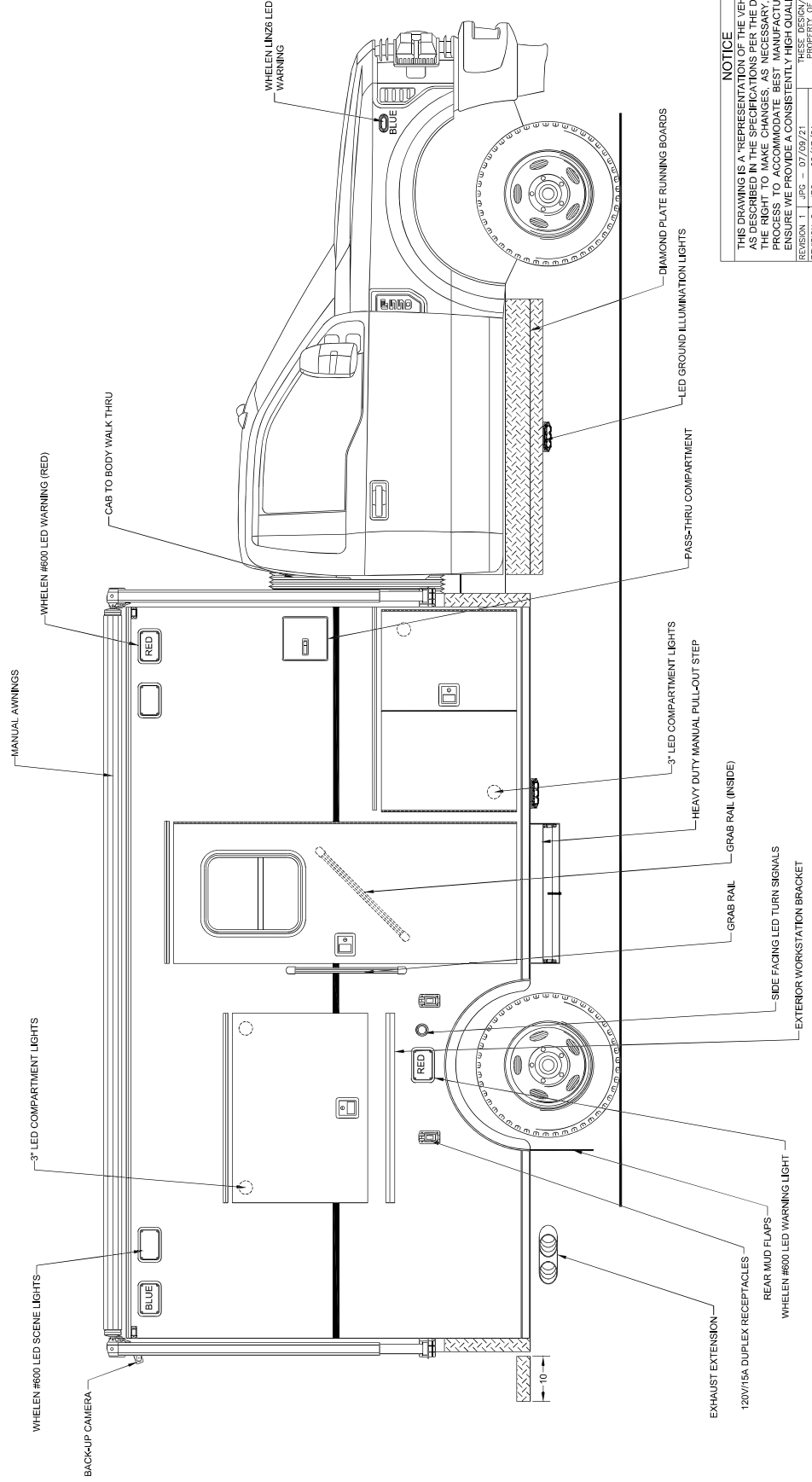
REVISION 1	JPS - 07/09/21	INITIALS
REVISION 2	JPS - 07/09/21	INITIALS
REVISION 3	MS - 10/28/21	INITIALS
REVISION 4		
REVISION 5		
REVISION 6		

Streetside Overall

Walnut Creek Police Dept. Walnut Creek, California



705 13TH STREET, LAKE PARK, FL
800-848-6652



NOTICE
THIS DRAWING IS A REPRESENTATION OF THE VEHICLE AND/OR COMPONENTS AS DESCRIBED IN THE SPECIFICATIONS PER THE DATE SHOWN. EVI RESERVES THE RIGHT TO MAKE CHANGES AS NECESSARY, DURING THE PRODUCTION PROCESS TO ACCOMMODATE BEST MANUFACTURING PROCESSES AND TO ENSURE WE PROVIDE A CONSISTENTLY HIGH QUALITY PRODUCT.
THIS DRAWING IS THE PROPERTY OF EVI. IT IS NOT TO BE REPRODUCED OR TRANSMITTED IN ANY FORM OR BY ANY MEANS, ELECTRONIC OR MECHANICAL, INCLUDING PHOTOCOPYING, RECORDING, OR BY ANY INFORMATION STORAGE AND RETRIEVAL SYSTEM. WITHOUT THE WRITTEN PERMISSION OF EVI, ANY REPRODUCTION OR TRANSMISSION IS PROHIBITED.

REVISION 1	JPS - 07/09/21	THIS DRAWING IS THE PROPERTY OF EVI. IT IS NOT TO BE REPRODUCED OR TRANSMITTED IN ANY FORM OR BY ANY MEANS, ELECTRONIC OR MECHANICAL, INCLUDING PHOTOCOPYING, RECORDING, OR BY ANY INFORMATION STORAGE AND RETRIEVAL SYSTEM. WITHOUT THE WRITTEN PERMISSION OF EVI, ANY REPRODUCTION OR TRANSMISSION IS PROHIBITED.
REVISION 2	NS - 10/28/21	
REVISION 3	NS - 10/28/21	
REVISION 4		
REVISION 5		
REVISION 6		

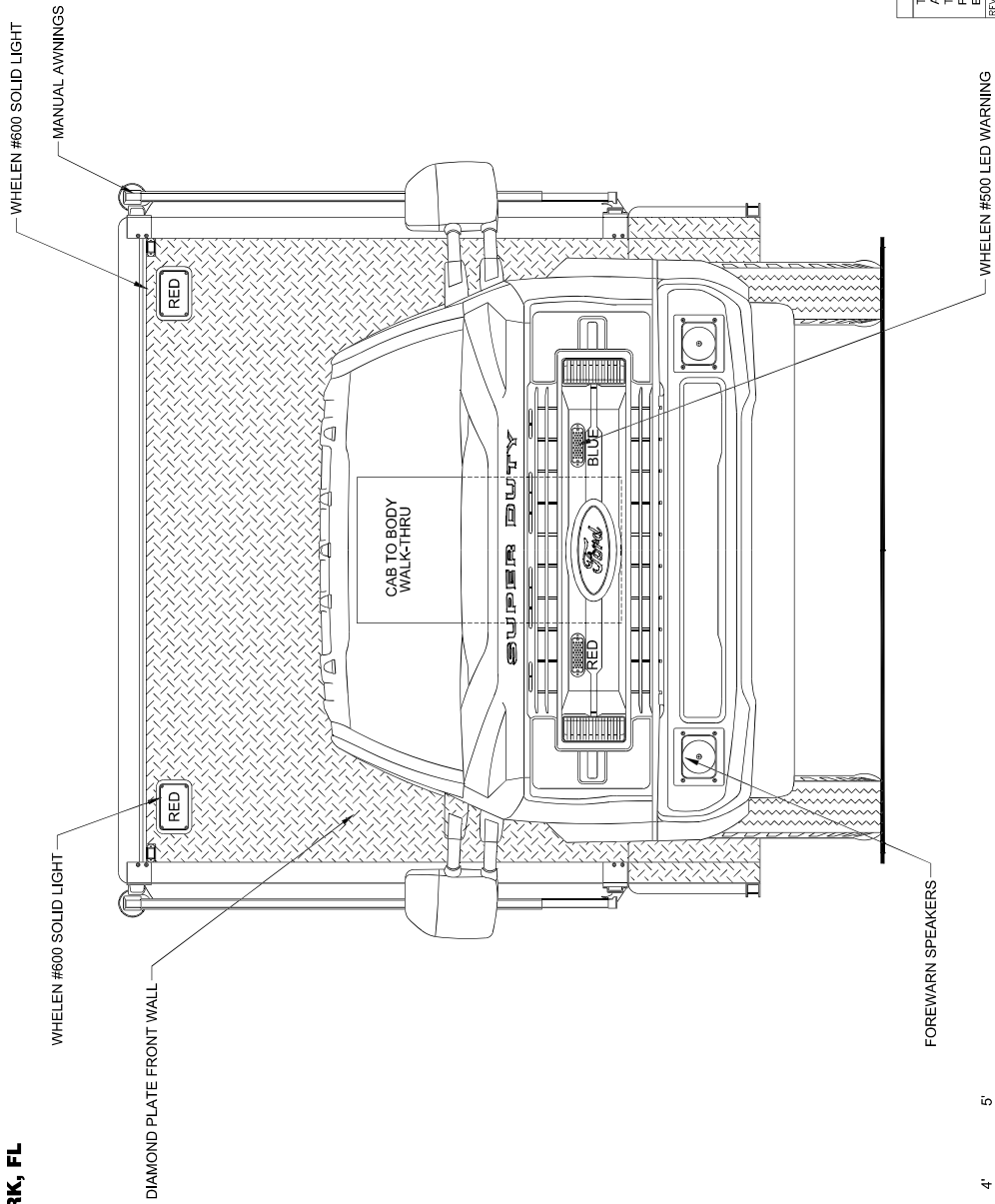
DATE: 10/28/21

Curbside Overall

Walnut Creek Police Dept. Walnut Creek, California



705 13TH STREET, LAKE PARK, FL
800-848-6652



NOTICE
THIS DRAWING IS A REPRESENTATION OF THE VEHICLE AND/OR COMPONENTS AS DESCRIBED IN THE SPECIFICATIONS PER THE DATE SHOWN. EVI RESERVES THE RIGHT TO MAKE CHANGES AS NECESSARY, DURING THE PRODUCTION PROCESS TO ACCOMMODATE BEST MANUFACTURING PROCESSES AND TO ENSURE WE PROVIDE A CONSISTENTLY HIGH QUALITY PRODUCT.
THIS DRAWING IS THE PROPERTY OF EVI. IT IS NOT TO BE REPRODUCED OR TRANSMITTED IN ANY FORM OR BY ANY MEANS, ELECTRONIC OR MECHANICAL, INCLUDING PHOTOCOPYING, RECORDING, OR BY ANY INFORMATION STORAGE AND RETRIEVAL SYSTEM. ANY UNAUTHORIZED USE OF THIS DRAWING IS PROHIBITED.
DATE: 10/28/21

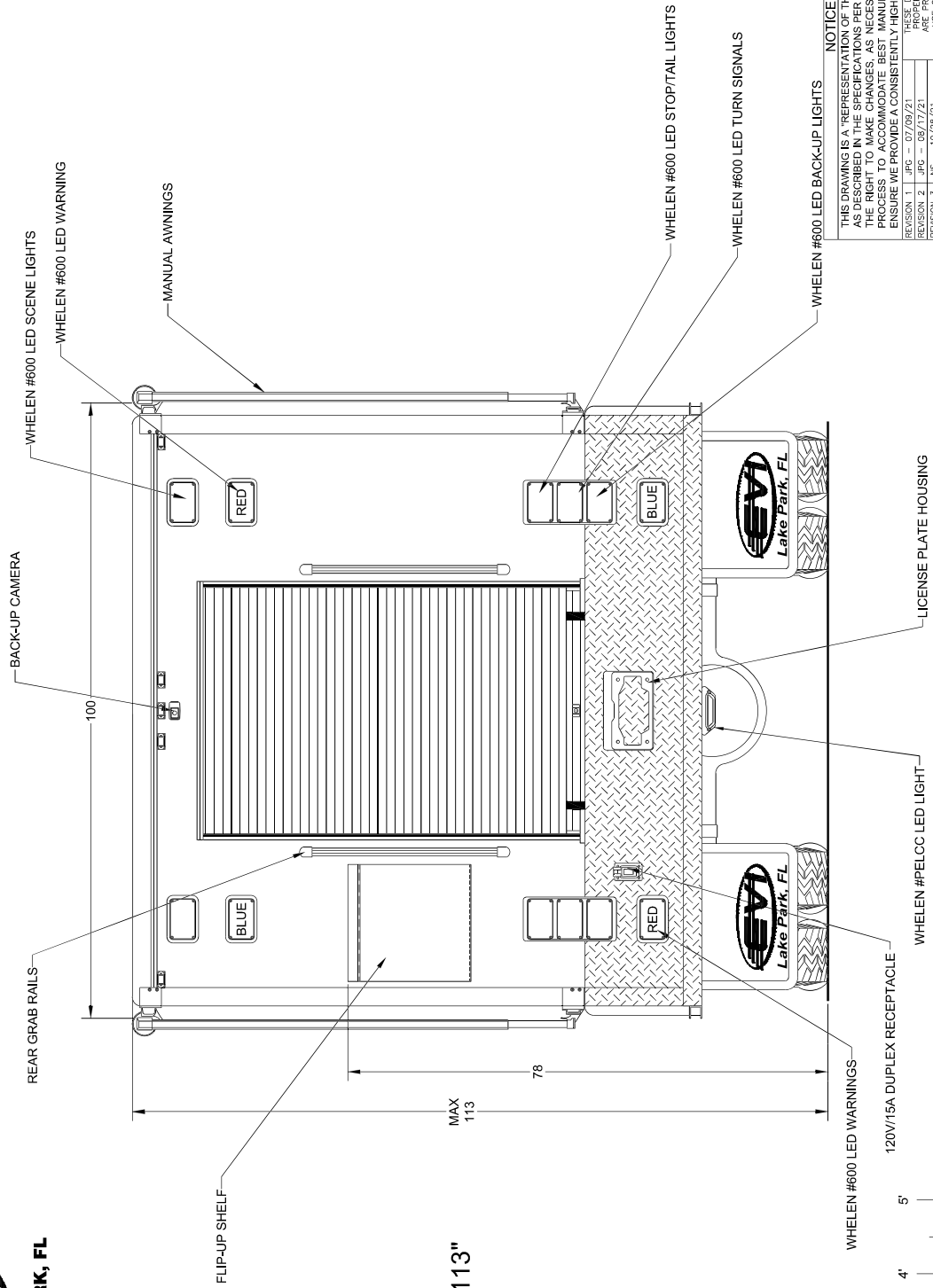
REVISION 1	JPS - 07/07/21	INITIALS
REVISION 2	NS - 10/28/21	NS
REVISION 3	NS - 10/28/21	NS
REVISION 4	-	-
REVISION 5	-	-
REVISION 6	-	-

Front View

Walnut Creek Police Dept. Walnut Creek, California



705 13TH STREET, LAKE PARK, FL
800-848-6652



MAX HEIGHT 113"



NOTICE
THIS DRAWING IS A REPRESENTATION OF THE VEHICLE AND/OR COMPONENTS AS DESCRIBED IN THE SPECIFICATIONS PER THE DATE SHOWN. EVI RESERVES THE RIGHT TO MAKE CHANGES AS NECESSARY, DURING THE PRODUCTION PROCESS TO ACCOMMODATE BEST MANUFACTURING PROCESSES AND TO ENSURE WE PROVIDE A CONSISTENTLY HIGH QUALITY PRODUCT.
THESE COMPONENTS ARE THE PROPERTY OF EVI. IF YOU ARE THE PROPERTY OF EVI, YOU ARE PROHIBITED FROM REPRODUCING OR USING THEM FOR ANY OTHER PURPOSES WITHOUT THE WRITTEN PERMISSION OF EVI. ANY VIOLATION OF THIS POLICY IS PROHIBITED.
DATE: 10/28/21

Rear View